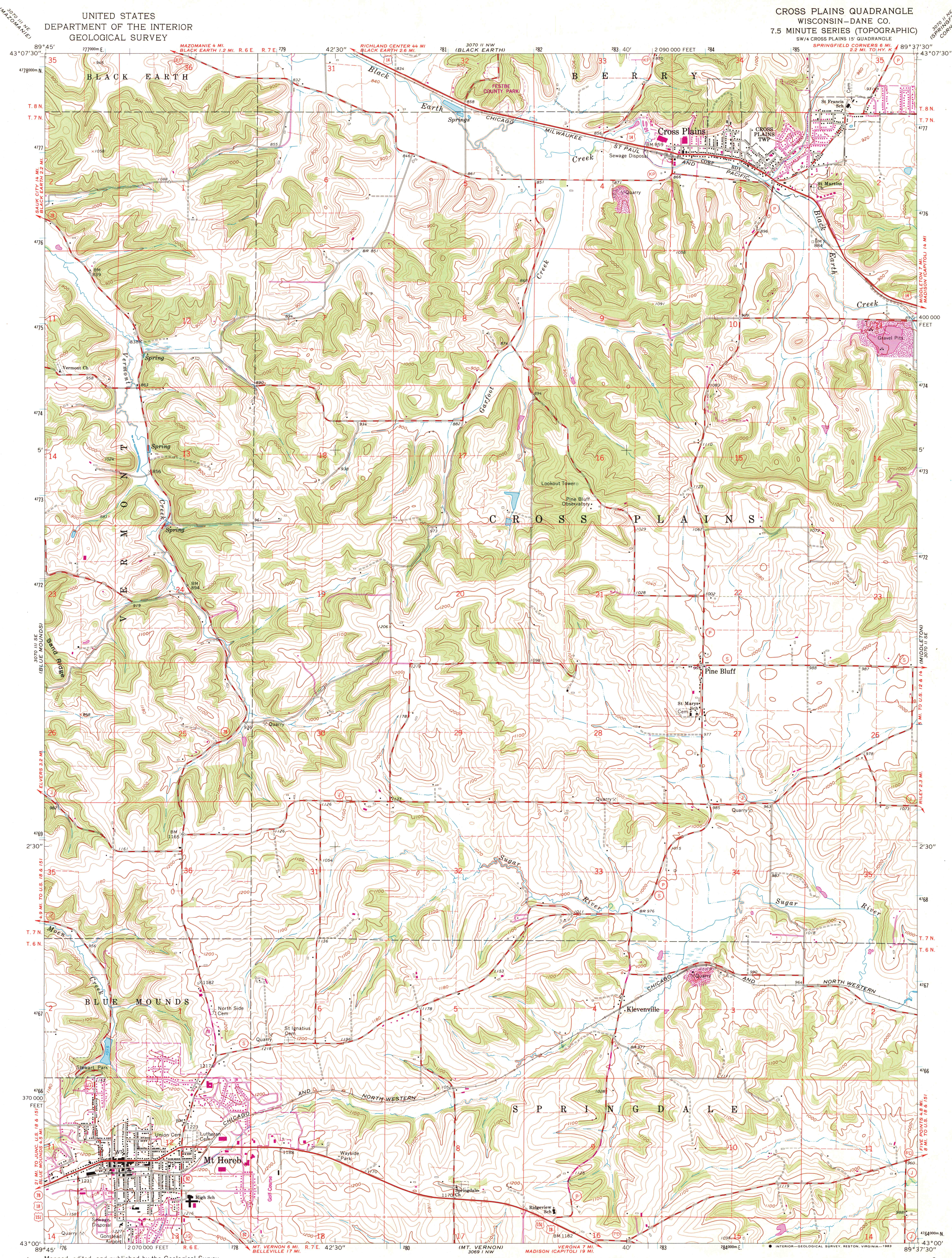


UNITED STATES  
DEPARTMENT OF THE INTERIOR  
GEOLOGICAL SURVEY

CROSS PLAINS QUADRANGLE  
WISCONSIN-DANE CO.  
7.5 MINUTE SERIES (TOPOGRAPHIC)  
SW 1/4 CROSS PLAINS 15' QUADRANGLE  
SPRINGFIELD CORNERS 6 MI.  
2.2 MI. TO NW CORNER



Maped, edited, and published by the Geological Survey  
in cooperation with State of Wisconsin agencies  
Control by USGS and USC&GS  
Topography by photogrammetric methods from aerial  
photographs taken 1960. Field checked 1962  
Polyconic projection. 1927 North American datum  
10,000-foot grid based on Wisconsin coordinate system, south zone  
1000-meter Universal Transverse Mercator grid ticks,  
zone 16, shown in blue  
To place on the predicted North American Datum 1983  
move the projection lines 4 meters north and  
10 meters east as shown by dashed corner ticks  
Revisions shown in purple compiled from aerial photographs taken 1980  
and other sources. This information not field checked. Map edited 1982

SCALE 1:24,000  
1 2 3 4 5 6 7 8 9 10 11 12 13 14 15 16 17 18 19 20 21 22 23 24 25 26 27 28 29 30 31 32 33 34 35 36 37 38 39 40 41 42 43 44 45 46 47 48 49 50 51 52 53 54 55 56 57 58 59 60 61 62 63 64 65 66 67 68 69 70 71 72 73 74 75 76 77 78 79 80 81 82 83 84 85 86 87 88 89 90 91 92 93 94 95 96 97 98 99 100  
CONTOUR INTERVAL 20 FEET  
NATIONAL GEODETIC VERTICAL DATUM OF 1929  
THIS MAP COMPLIES WITH NATIONAL MAP ACCURACY STANDARDS  
FOR SALE BY U. S. GEOLOGICAL SURVEY, RESTON, VIRGINIA 22092  
AND WISCONSIN GEOLOGICAL AND NATURAL HISTORY SURVEY, MADISON, WISCONSIN 53706  
A FOLDER DESCRIBING TOPOGRAPHIC MAPS AND SYMBOLS IS AVAILABLE ON REQUEST

ROAD CLASSIFICATION  
Heavy-duty ——— Light-duty ———  
Medium-duty ——— Unimproved dirt ———  
U. S. Route ——— State Route ———  
CROSS PLAINS, WIS.  
SW 1/4 CROSS PLAINS 15' QUADRANGLE  
N4300—W8937.5/7.5  
1962  
PHOTOREVISED 1982  
DMA 3070 II SW—SERIES V861

A.H. ROBINSON  
MAP LIBRARY  
OCT - 6 1983  
University of Wisconsin  
Madison

1982  
Copy  
1-1