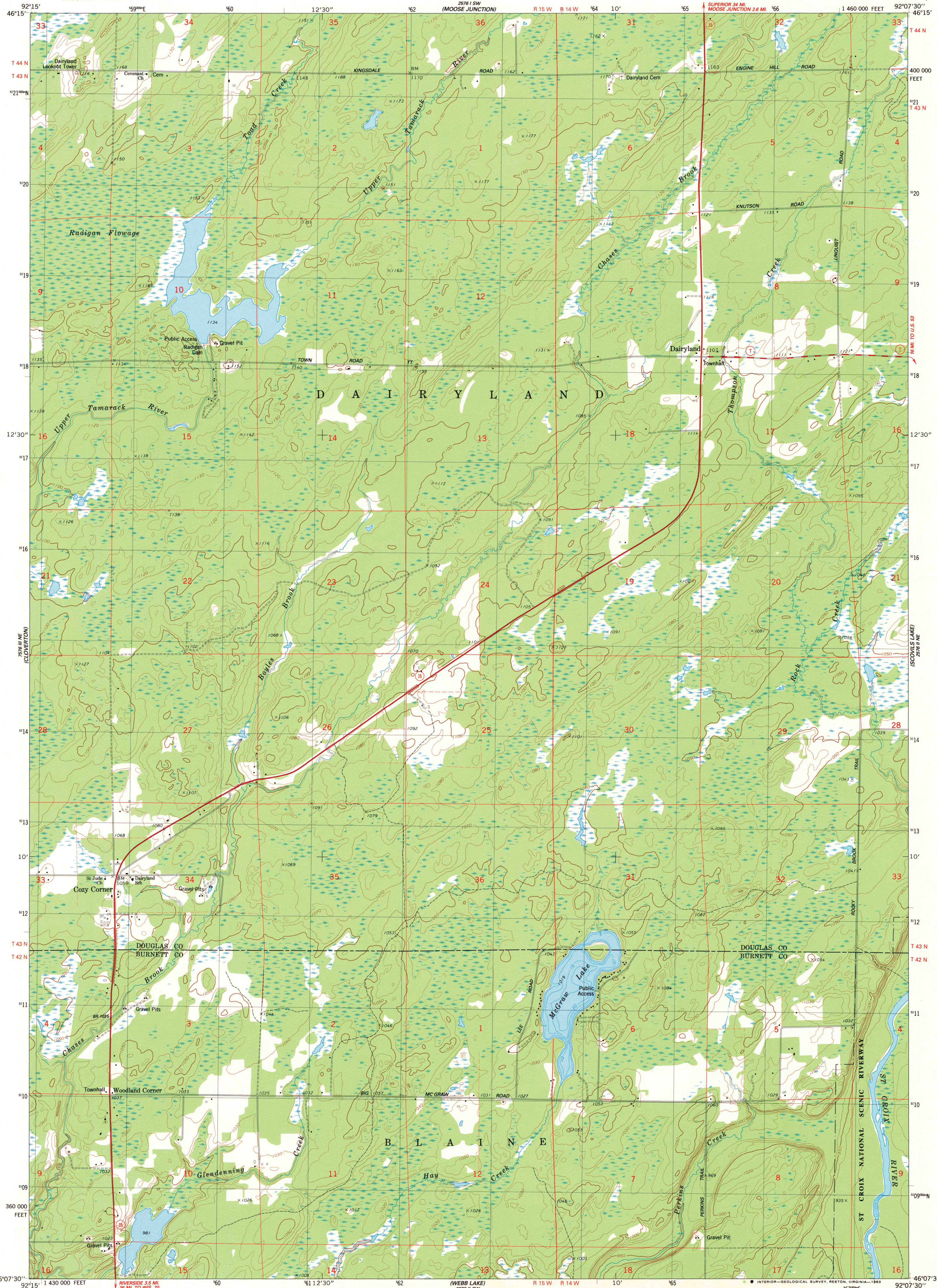
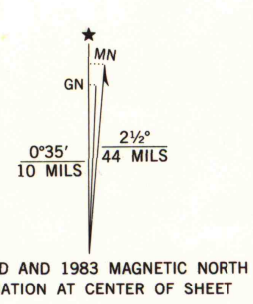


UNITED STATES  
DEPARTMENT OF THE INTERIOR  
GEOLOGICAL SURVEY

DAIRYLAND QUADRANGLE  
WISCONSIN  
7.5 MINUTE SERIES (TOPOGRAPHIC)  
NW 1/4 WEBB LAKE 15' QUADRANGLE



Mapped, edited, and published by the Geological Survey  
Control by USGS and NOS/NOAA  
Topography by photogrammetric methods from aerial photographs taken 1979. Field checked 1979. Map edited 1983  
Hydrography compiled from information furnished by Wisconsin Department of Natural Resources  
Projection and 10,000-foot grid ticks: Wisconsin coordinate system, north zone (Lambert conformal conic)  
1000-meter Universal Transverse Mercator grid, zone 15  
1927 North American Datum  
To place on the predicted North American Datum 1983 move the projection lines 8 meters north and 14 meters east as shown by dashed corner ticks  
There may be private inholdings within the boundaries of the National or State reservations shown on this map  
Fine red dashed lines indicate selected fence and field lines where generally visible on aerial photographs  
This information is unchecked



SCALE 1:24 000  
CONTOUR INTERVAL 10 FEET  
NATIONAL GEODETIC VERTICAL DATUM OF 1929



ROAD CLASSIFICATION  
Primary highway, hard surface  
Secondary highway, hard surface  
Unimproved road  
U. S. Route  
State Route

DAIRYLAND, WIS.  
NW 1/4 WEBB LAKE 15' QUADRANGLE  
N4607.5-W9207.57.5

JUN - 4 1984  
ARTHUR H. ROBINSON MAP LIBRARY  
University of Wisconsin-Madison

DMA 2576 II NW-SERIES V861

1983  
Copy  
1-1