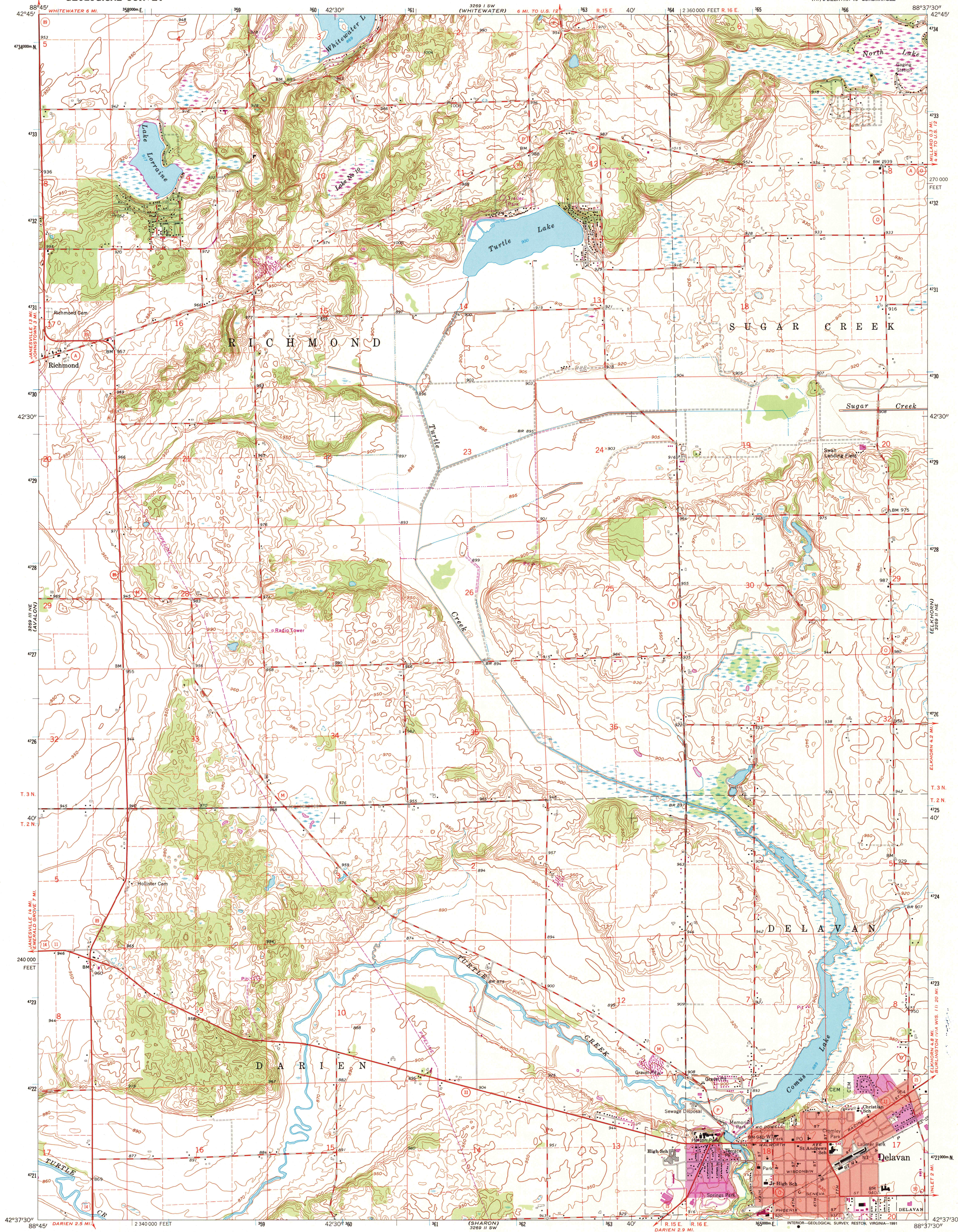


2500' N. OF  
CLIM CENTER

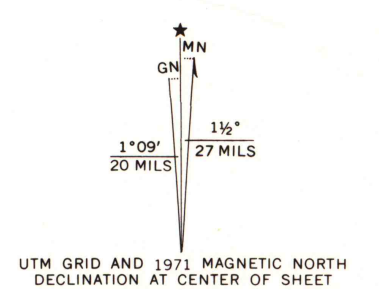
UNITED STATES  
DEPARTMENT OF THE INTERIOR  
GEOLOGICAL SURVEY

DELAVAN QUADRANGLE  
WISCONSIN-WALWORTH CO.  
7.5 MINUTE SERIES (TOPOGRAPHIC)  
NW/4 DELAVAN 15' QUADRANGLE

2500' N. OF  
LITTLE PRAIRIE



Mapped, edited, and published by the Geological Survey  
Control by USGS, and USC&GS  
Topography by photogrammetric methods from aerial  
photographs taken 1955. Field checked 1960  
Polyconic projection. 1927 North American datum  
10,000-foot grid based on Wisconsin coordinate system, south zone  
1000-meter Universal Transverse Mercator grid ticks,  
zone 16, shown in blue  
Red tint indicates area in which only landmark buildings are shown  
Fine red dashed lines indicate selected fence and field lines where  
generally visible on aerial photographs. This information is unchecked  
Revisions shown in purple compiled from aerial photographs  
taken 1971. This information not field checked  
Purple tint indicates extension of urban areas



SCALE 1:24,000  
1000 0 1000 2000 3000 4000 5000 6000 7000 FEET  
1 MILE  
1 0 1 2 3 4 5 6 7 8 9 10 KILOMETER  
CONTOUR INTERVAL 10 FEET  
DOTTED LINES REPRESENT 5-FOOT CONTOURS  
DATUM IS MEAN SEA LEVEL  
THIS MAP COMPLIES WITH NATIONAL MAP ACCURACY STANDARDS  
FOR SALE BY U.S. GEOLOGICAL SURVEY, DENVER, COLORADO 80225, OR RESTON, VIRGINIA 22092  
AND WISCONSIN GEOLOGICAL AND NATURAL HISTORY SURVEY, MADISON, WISCONSIN 53706  
A FOLDER DESCRIBING TOPOGRAPHIC MAPS AND SYMBOLS IS AVAILABLE ON REQUEST



QUADRANGLE LOCATION  
Map photoinspected 1986  
No major culture or drainage changes observed

ROAD CLASSIFICATION  
Heavy-duty ——— Light-duty ———  
Medium-duty ——— Unimproved dirt ———  
U.S. Route ——— State Route ———

DELAVAN, WIS.  
NW/4 DELAVAN 15' QUADRANGLE  
N4237.5-W8837.5/7.5  
PHOTOINSPECTED 1986  
1960  
PHOTOREVISED 1971  
AMS 3269 II NW-SERIES V861

U.S. Regional  
Depository Copy  
DO NOT DISCARD  
A.H. ROBINSON  
MAP LIBRARY  
NOV 19 1991  
University of Wisconsin  
Madison

1986  
Copy  
1-1  
X