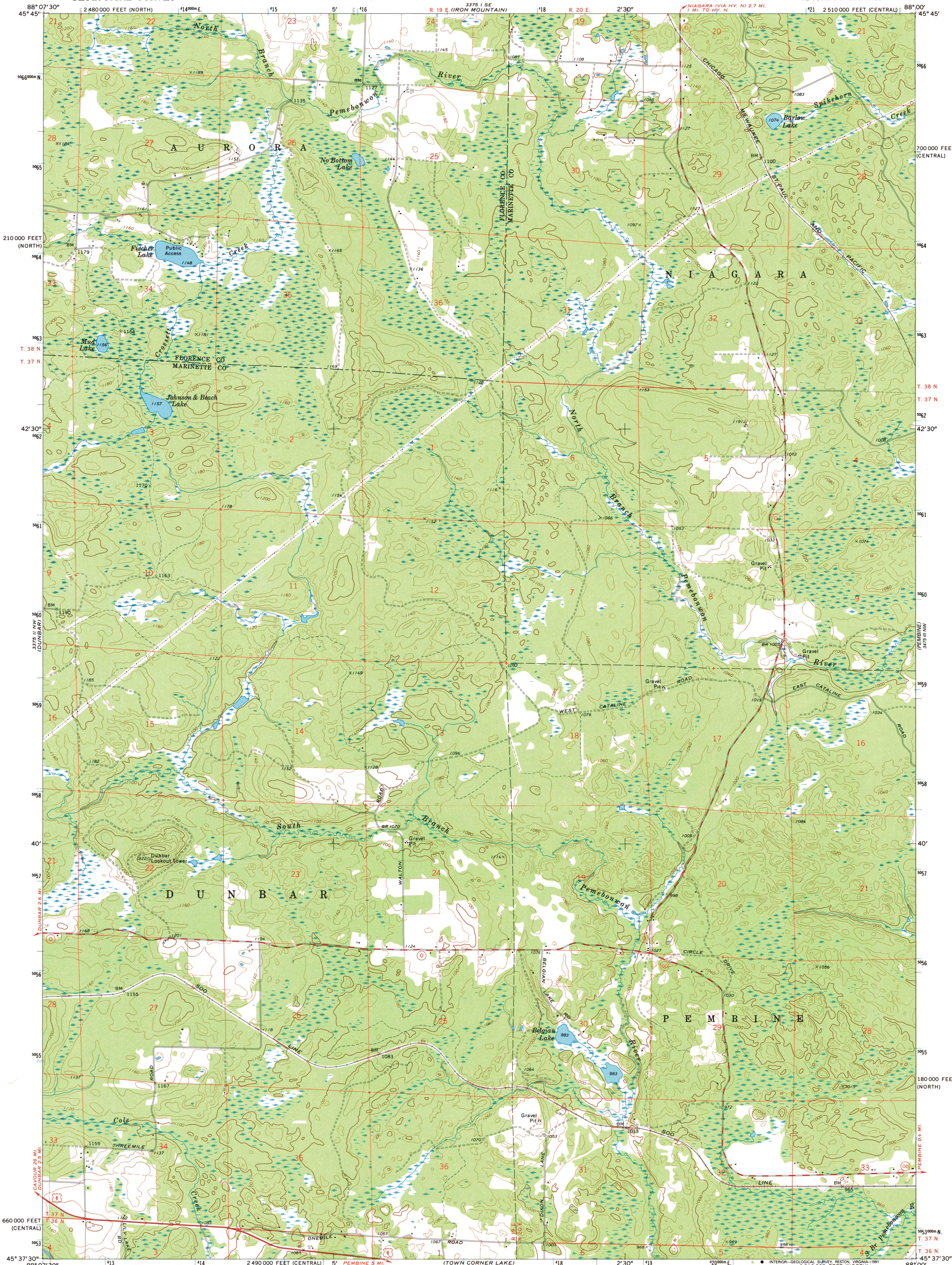
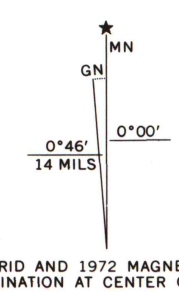


UNITED STATES  
DEPARTMENT OF THE INTERIOR  
GEOLOGICAL SURVEY

DUNBAR NE QUADRANGLE  
WISCONSIN  
7.5 MINUTE SERIES (TOPOGRAPHIC)  
NE 1/4 DUNBAR 15' QUADRANGLE  
2 510 000 FEET (CENTRAL)



Maped, edited, and published by the Geological Survey  
Control by USGS and USC&GS  
Topography by photogrammetric methods from aerial  
photographs taken 1971. Field checked 1972  
Projection: Wisconsin coordinate system, central zone  
(Lambert conformal conic)  
10,000-foot grid ticks based on Wisconsin coordinate  
system, central and north zones  
1000-meter Universal Transverse Mercator grid ticks,  
zone 16, shown in blue. 1927 North American datum  
Fine red dashed lines indicate selected fence and field lines where  
generally visible on aerial photographs. This information is unchecked  
Map photinspected 1981  
No major culture or drainage changes observed



THIS MAP COMPLIES WITH NATIONAL MAP ACCURACY STANDARDS  
FOR SALE BY U. S. GEOLOGICAL SURVEY, DENVER, COLORADO 80225, OR RESTON, VIRGINIA 22092  
AND WISCONSIN GEOLOGICAL AND NATURAL HISTORY SURVEY, MADISON, WISCONSIN 53706  
A FOLDER DESCRIBING TOPOGRAPHIC MAPS AND SYMBOLS IS AVAILABLE ON REQUEST



ROAD CLASSIFICATION  
Primary highway, hard surface ———— Light-duty road, hard or improved surface ————  
Secondary highway, hard surface ———— Unimproved road ————  
Interstate Route ———— U. S. Route ———— State Route ————

DUNBAR NE, WIS.  
NE 1/4 DUNBAR 15' QUADRANGLE  
45088-F1-TF-024  
1972  
PHOTOINSPECTED 1981  
DMA 3375 II NE—SERIES V861

A.H. ROBINSON  
MAP LIBRARY  
DEC 04 1991  
University of Wisconsin  
Madison

1481  
Copy  
1-1  
X