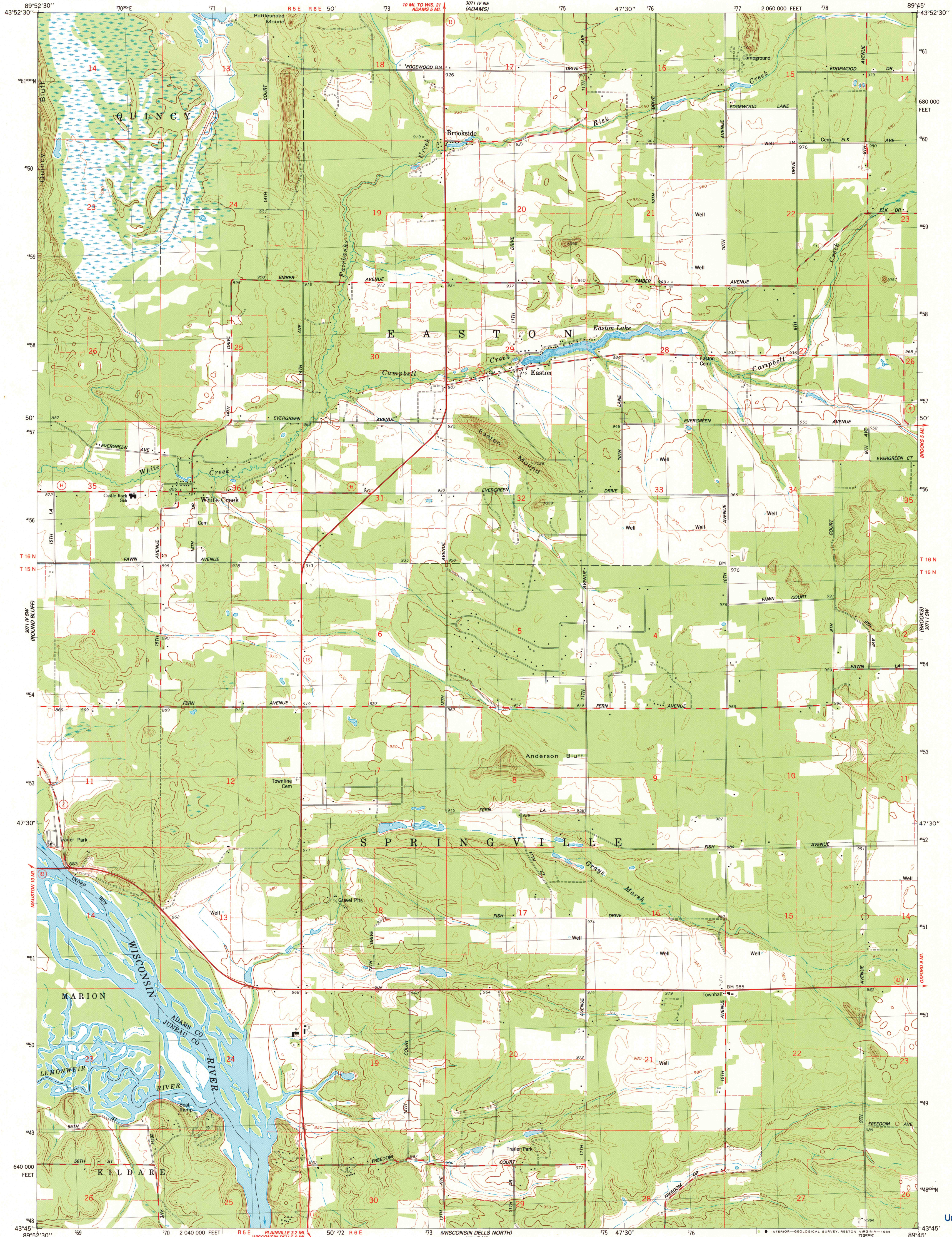
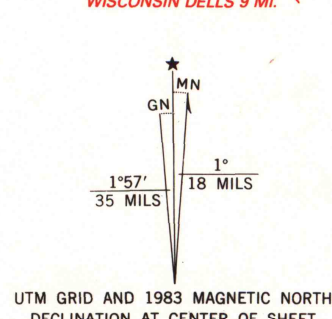


UNITED STATES
DEPARTMENT OF THE INTERIOR
GEOLOGICAL SURVEY

EASTON QUADRANGLE
WISCONSIN
7.5 MINUTE SERIES (TOPOGRAPHIC)
SE 1/4 EASTON 15' QUADRANGLE



Maped, edited, and published by the Geological Survey in cooperation with the Wisconsin Division of Highways and Wisconsin Geological and Natural History Survey Control by USGS and NOS/NOAA
Topography by photogrammetric methods from aerial photographs taken 1959-60. Revised from aerial photographs taken 1981. Field checked 1983. Map edited 1983.
Hydrography compiled from information furnished by Wisconsin Department of Natural Resources
Projection and 10,000-foot grid ticks: Wisconsin coordinate system, south zone (Lambert conformal conic)
1000-meter Universal Transverse Mercator grid, zone 16
1927 North American Datum
To place on the predicted North American Datum 1983, move the projection lines 5 meters north and 11 meters east as shown by dashed corner ticks
Fine red dashed lines indicate selected fence and field lines where generally visible on aerial photographs. This information is unchecked



SCALE 1:24 000
1 000 0 1000 2000 3000 4000 5000 6000 7000 FEET
1 0 1 2 3 4 5 6 7 8 9 10 KILOMETER
CONTOUR INTERVAL 10 FEET
NATIONAL GEODETIC VERTICAL DATUM OF 1929

THIS MAP COMPLIES WITH NATIONAL MAP ACCURACY STANDARDS
FOR SALE BY U. S. GEOLOGICAL SURVEY, RESTON, VIRGINIA 22092
AND WISCONSIN GEOLOGICAL AND NATURAL HISTORY SURVEY, MADISON, WISCONSIN 53706
A FOLDER DESCRIBING TOPOGRAPHIC MAPS AND SYMBOLS IS AVAILABLE ON REQUEST



ROAD CLASSIFICATION
Primary highway, hard surface ——— Light-duty road, hard or improved surface ———
Secondary highway, hard surface ——— Unimproved road, ———
○ Interstate Route ○ U. S. Route ○ State Route

EASTON, WIS.
SE 1/4 EASTON 15' QUADRANGLE
N4345-W8945/7.5
1983

DMA 3071 IV SE-SERIES V861

A.H. ROBINSON
MAP LIBRARY
SEP 27 1984
University of Wisconsin
Madison

1983
copy
1-1
X