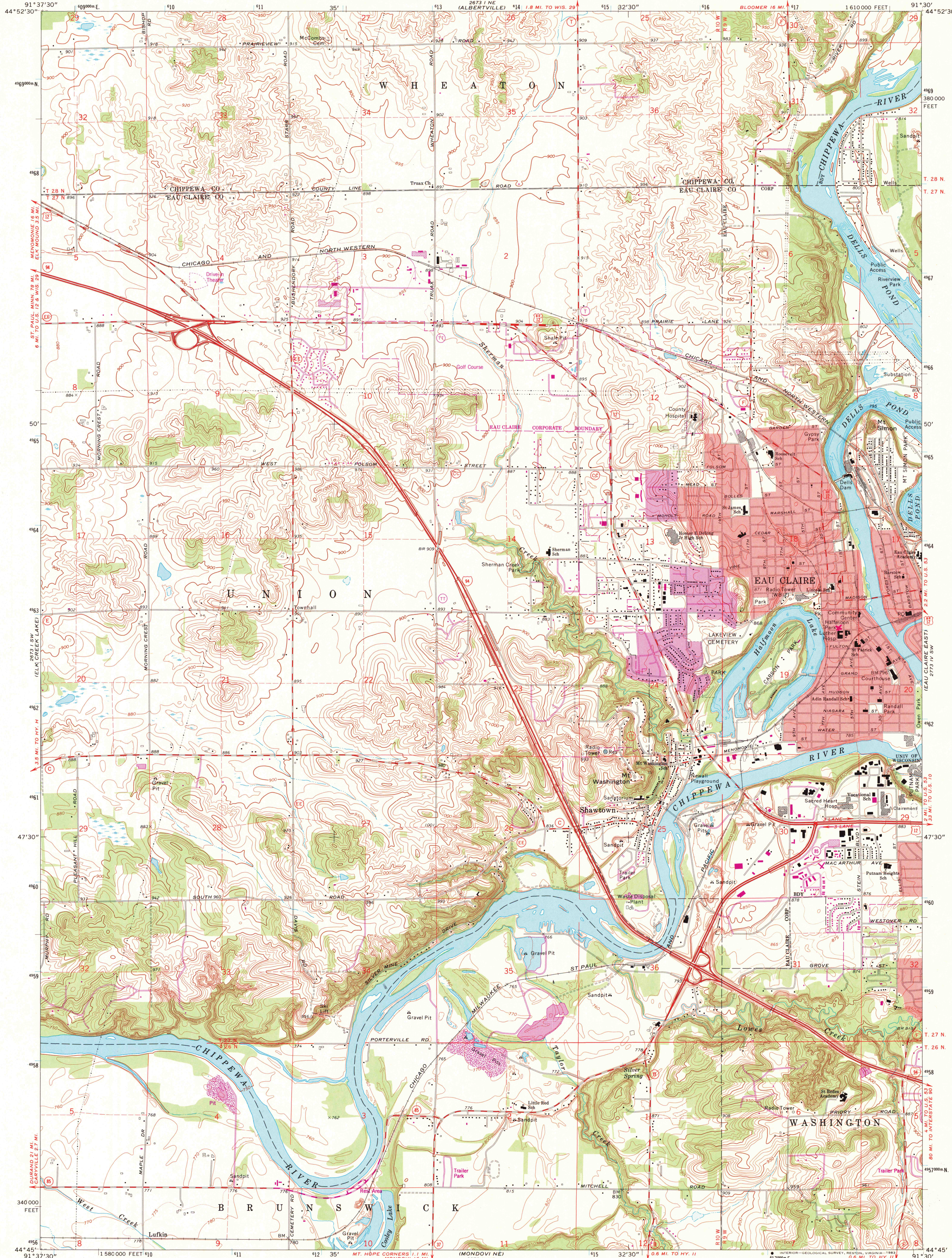


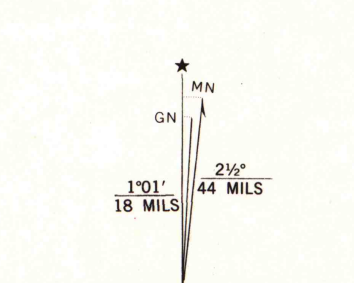
UNITED STATES
DEPARTMENT OF THE INTERIOR
GEOLOGICAL SURVEY

STATE OF WISCONSIN
STATE HIGHWAY COMMISSION
GEOLOGICAL AND NATURAL HISTORY SURVEY

EAU CLAIRE WEST QUADRANGLE
WISCONSIN
7.5 MINUTE SERIES (TOPOGRAPHIC)



Mapped, edited, and published by the Geological Survey in cooperation with the Wisconsin Highway Commission and Wisconsin Geological and Natural History Survey. Control by USGS and USC&GS. Topography by photogrammetric methods from aerial photographs taken 1972. Field checked 1972. Hydrography compiled from information furnished by Wisconsin Department of Natural Resources. Projection and 10,000-foot grid ticks: Wisconsin coordinate system, central zone (Lambert conformal conic). 1000-meter Universal Transverse Mercator grid ticks, zone 15, shown in blue. 1927 North American datum. Red tint indicates areas in which only landmark buildings are shown. To place on the predicted North American Datum 1983 move the projection lines 7 meters north and 13 meters east as shown by dashed corner ticks.



THIS MAP COMPLIES WITH NATIONAL MAP ACCURACY STANDARDS FOR SALE BY U. S. GEOLOGICAL SURVEY, RESTON, VIRGINIA 22092 AND BY THE WISCONSIN GEOLOGICAL AND NATURAL HISTORY SURVEY, MADISON, WISCONSIN 53706. A FOLDER DESCRIBING TOPOGRAPHIC MAPS AND SYMBOLS IS AVAILABLE ON REQUEST.

Revisions shown in purple compiled from aerial photographs taken 1980 and other sources. This information not field checked. Map edited 1982. Purple tint indicates extension of urban area.

ROAD CLASSIFICATION
Primary highway, hard surface
Secondary highway, hard surface
Light-duty road, hard or improved surface
Unimproved road
Interstate Route
U. S. Route
State Route

EAU CLAIRE WEST, WIS.

N4445-W9130/7.5
1972
PHOTOREVISED 1982
DMA 2673 1 SE-SERIES V861

A.H. ROBINSON
MAD LIBRARY
OCT - 6 1983
University of Wisconsin
Madison

1982
Copy
1-1