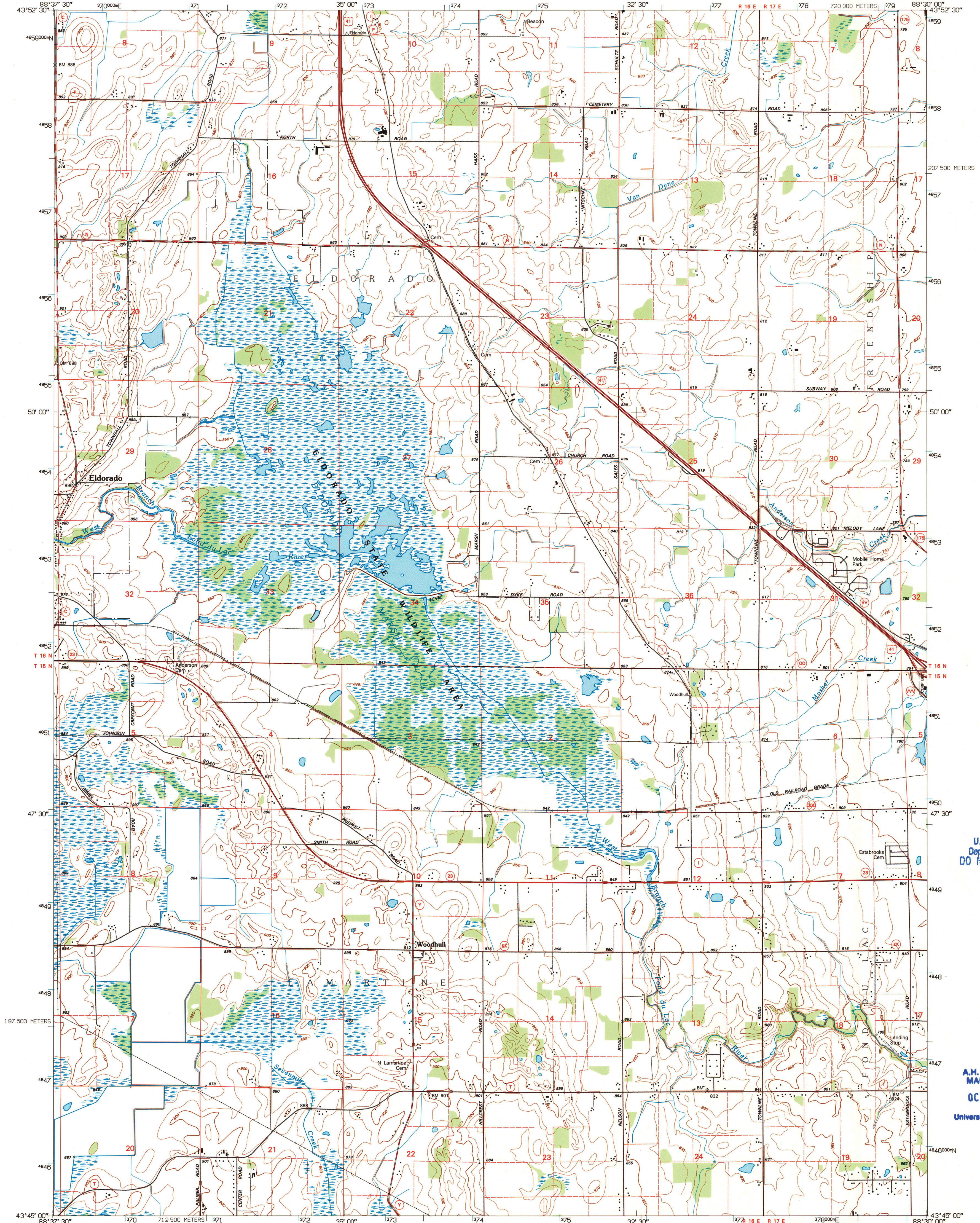


UNITED STATES
DEPARTMENT OF THE INTERIOR
GEOLOGICAL SURVEY

ELDORADO QUADRANGLE
WISCONSIN-FOND DU LAC CO.
7.5-MINUTE SERIES (TOPOGRAPHIC)



U.S. Regional
Depository Copy
DO NOT DISCARD

A.H. ROBINSON
MAP LIBRARY
OCT 9 1996
University of Wisconsin
Madison

Produced by the United States Geological Survey
Compiled from imagery dated 1976. Revised from imagery
dated 1992. PLSS, survey control, contours, and elevations
current as of 1976. Map edited 1995
North American Datum of 1983 (NAD 83). Projection and
blue 1000-meter ticks: Universal Transverse Mercator, zone 16
2500-meter ticks: Wisconsin Coordinate System of 1983 (south zone)
North American Datum of 1927 (NAD 27) is shown by dashed
corner ticks. The values of the shift between NAD 83 and NAD 27
for 7.5-minute intersections are obtainable from National Geodetic
Survey NADCON software
There may be private inholdings within the boundaries of
the National or State reservations shown on this map

UTM GRID AND 1993 MAGNETIC NORTH
DECLINATION AT CENTER OF SHEET

SCALE 1:24 000
CONTOUR INTERVAL 10 FEET
SUPPLEMENTARY CONTOUR INTERVAL 5 FEET
NATIONAL GEODETIC VERTICAL DATUM OF 1929

ROAD CLASSIFICATION
Primary highway
Secondary highway
Light-duty road, hard or
improved surface
Unimproved road
Interstate Route
U.S. Route
State Route

QUADRANGLE LOCATION
1 Pickett
2 Van Dyne
3 Fahrney Point
4 Rosendale
5 Fond du Lac
6 Waupun North
7 Oakfield
8 Byron

ELDORADO, WI
43088-G5-TF-024
1992
DMA 3271 1 SE-SERIES V861

1995
copy
1-1