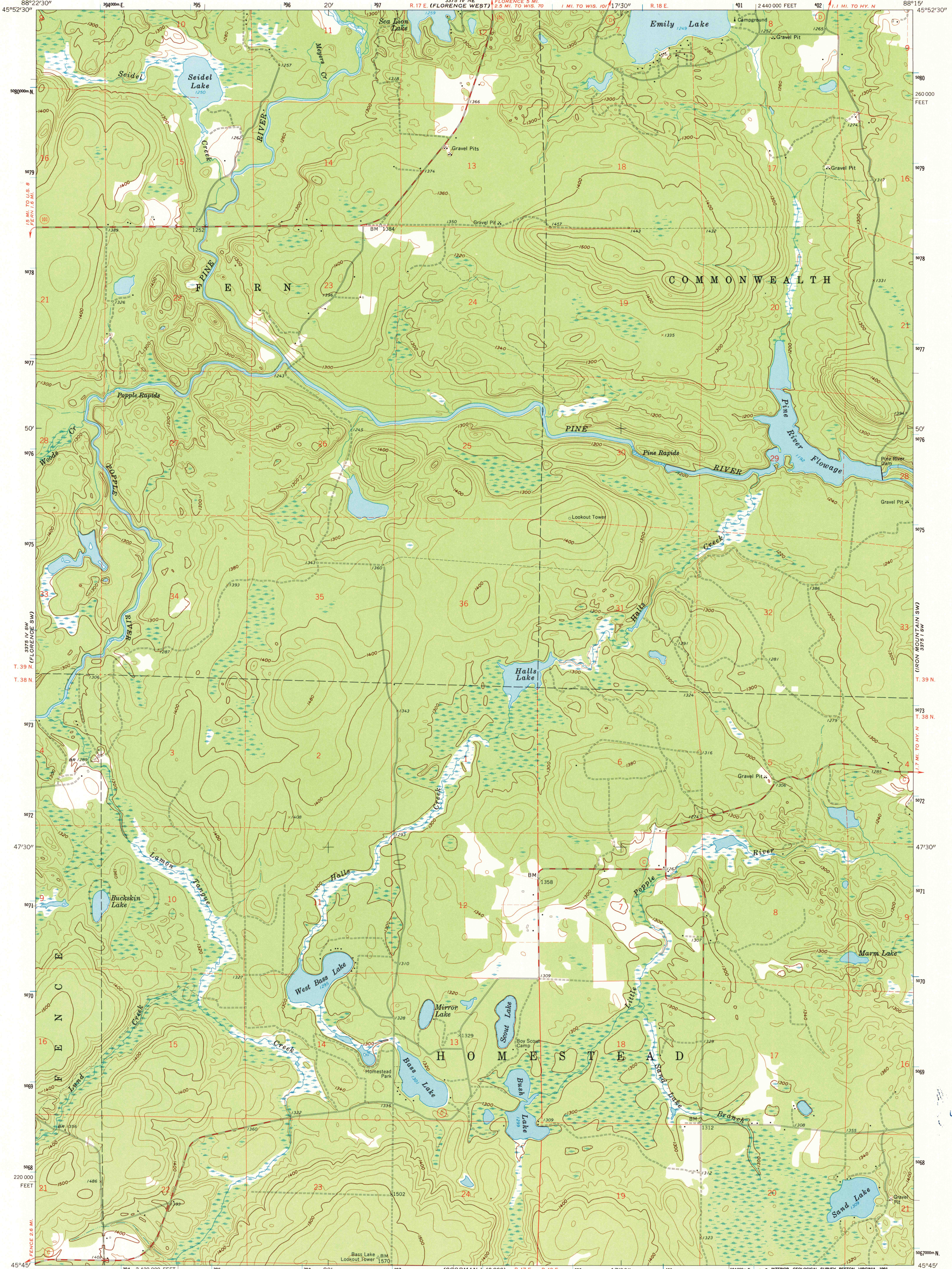


UNITED STATES
DEPARTMENT OF THE INTERIOR
GEOLOGICAL SURVEY

FLORENCE SE QUADRANGLE
WISCONSIN—FLORENCE CO.
7.5 MINUTE SERIES (TOPOGRAPHIC)



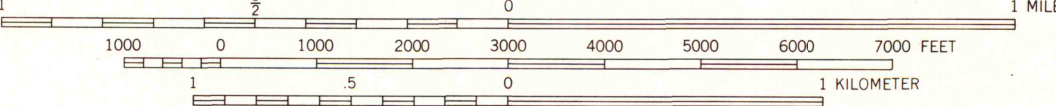
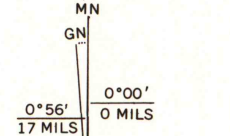
Mapped, edited, and published by the Geological Survey
Control by USGS and USC&GS

Topography by photogrammetric methods from aerial
photographs taken 1958. Field checked 1962

Polyconic projection. 1927 North American datum
10,000-foot grid based on Wisconsin coordinate system, north zone
1000-meter Universal Transverse Mercator grid ticks,
zone 16, shown in blue

Fine red dashed lines indicate selected fence and field lines where
generally visible on aerial photographs. This information is unchecked

Map photoinspected 1980
No major culture or drainage changes observed



CONTOUR INTERVAL 20 FEET
DATUM IS MEAN SEA LEVEL

THIS MAP COMPLIES WITH NATIONAL MAP ACCURACY STANDARDS
FOR SALE BY U.S. GEOLOGICAL SURVEY, DENVER, COLORADO 80225, OR RESTON, VIRGINIA 22092
AND WISCONSIN GEOLOGICAL AND NATURAL HISTORY SURVEY, MADISON, WISCONSIN 53706
A FOLDER DESCRIBING TOPOGRAPHIC MAPS AND SYMBOLS IS AVAILABLE ON REQUEST



ROAD CLASSIFICATION
Medium-duty ——— Light-duty ———
Unimproved dirt ———
State Route ○

FLORENCE SE, WIS.
N4545—W8815/7.5

1962
PHOTOINSPECTED 1980
AMS 3375 IV SE—SERIES V861

U.S. Regional
Depository Copy
DO NOT DISCARD

A.H. ROBINSON
MAP LIBRARY

NOV 19 1991

University of Wisconsin
Madison

1980
Copy
1-1