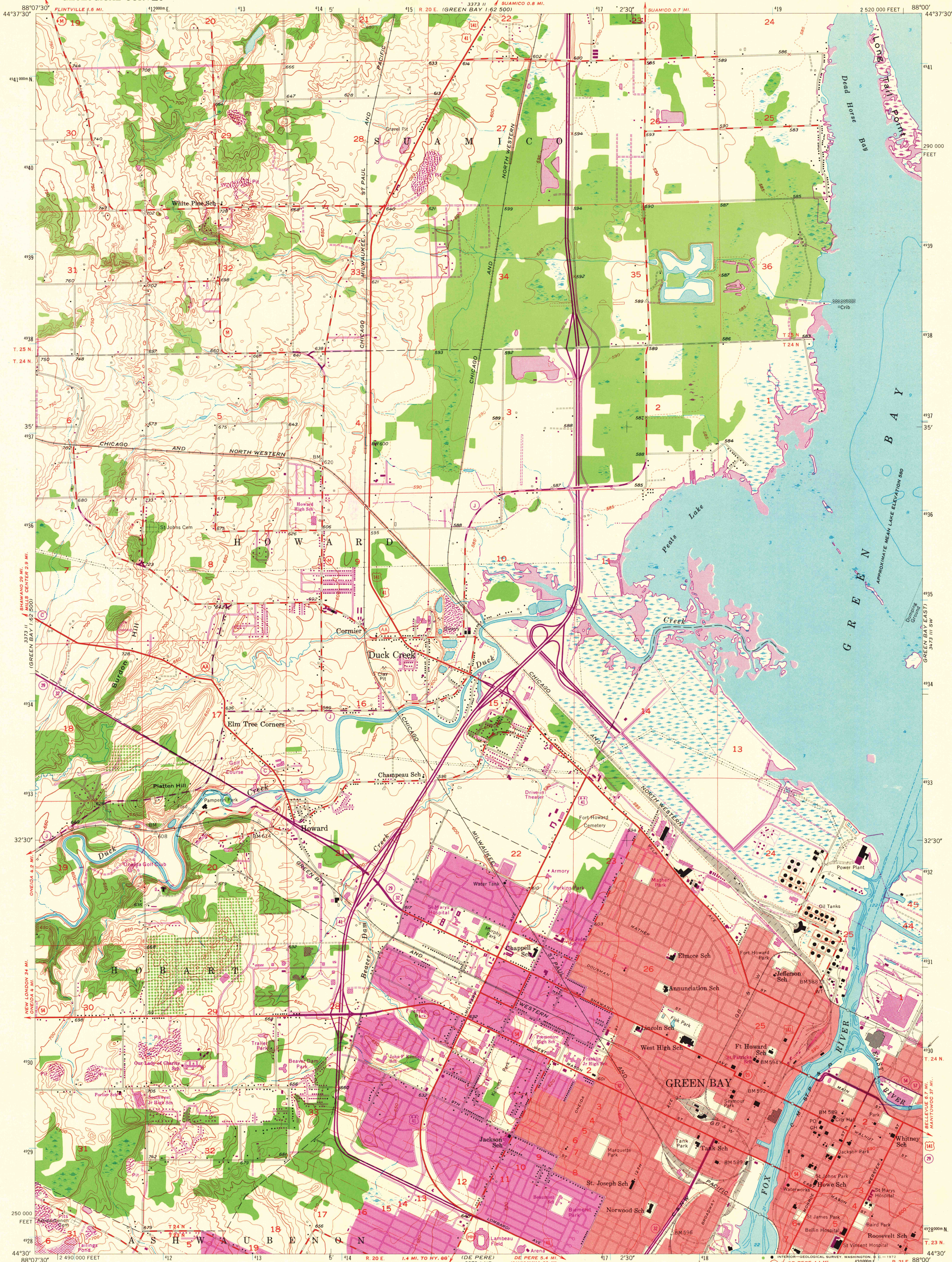


UNITED STATES
DEPARTMENT OF THE INTERIOR
GEOLOGICAL SURVEY

GREEN BAY WEST QUADRANGLE
WISCONSIN-BROWN CO.
7.5 MINUTE SERIES (TOPOGRAPHIC)
SE/4 GREEN BAY 15' QUADRANGLE



Mapped, edited, and published by the Geological Survey
Control by USGS and USC&GS

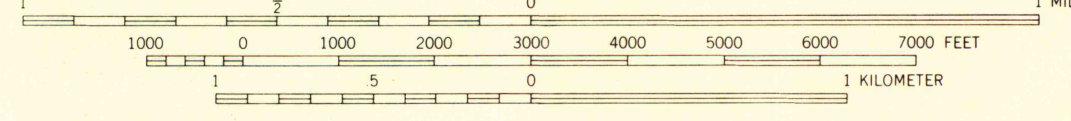
Topography from aerial photographs by Kelsh plotter and by
plane-table surveys 1952 and 1954. Aerial photographs taken 1951
Hydrography from U.S. Lake Survey Chart 725 (1:25,000)

Polyconic projection. 1927 North American datum
10,000-foot grid based on Wisconsin coordinate system, central zone
1000-meter Universal Transverse Mercator grid ticks,
zone 16, shown in blue

Red tint indicates areas in which only
landmark buildings are shown

Revisions shown in purple compiled from aerial photographs
taken 1971. This information not field checked

Purple tint indicates extension of urban areas



CONTOUR INTERVAL 10 FEET
DASHED LINES REPRESENT HALF-INTERVAL CONTOURS
DATUM IS MEAN SEA LEVEL
DEPTH CURVES AND SOUNDINGS IN FEET-DATUM IS 578 FEET

THIS MAP COMPLIES WITH NATIONAL MAP ACCURACY STANDARDS
FOR SALE BY U. S. GEOLOGICAL SURVEY, WASHINGTON, D. C. 20242
AND BY THE WISCONSIN GEOLOGICAL AND NATURAL HISTORY SURVEY, MADISON, WISCONSIN 53706
A FOLDER DESCRIBING TOPOGRAPHIC MAPS AND SYMBOLS IS AVAILABLE ON REQUEST



ROAD CLASSIFICATION
Heavy-duty ——— Light-duty ———
Medium-duty ——— Unimproved dirt ———
MAP AND AIR PHOTO ———
State Route ———

APR 14 1972 GREEN BAY WEST, WIS.
SE/4 GREEN BAY 15' QUADRANGLE
N4430-W8800/7.5

1954
PHOTOREVISED 1971
AMS 3373 II SE-SERIES W861

1971
copy
1-1