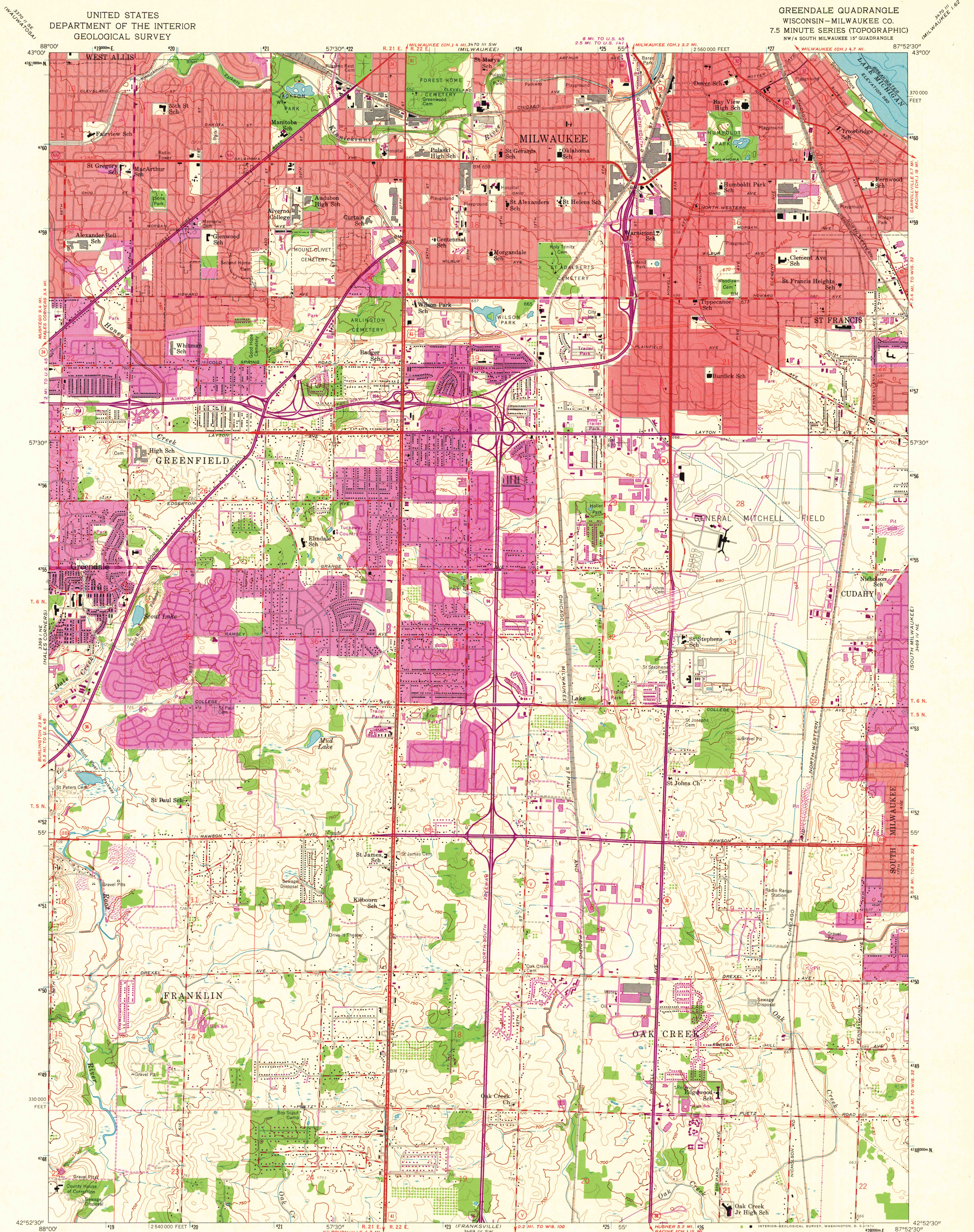
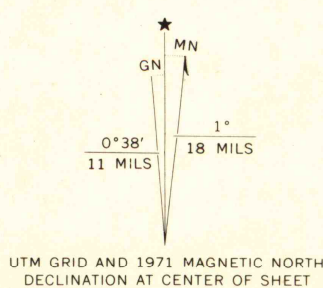


UNITED STATES  
DEPARTMENT OF THE INTERIOR  
GEOLOGICAL SURVEY

GREENDALE QUADRANGLE  
WISCONSIN—MILWAUKEE CO.  
7.5 MINUTE SERIES (TOPOGRAPHIC)  
NW 1/4 SOUTH MILWAUKEE 15' QUADRANGLE



Mapped, edited, and published by the Geological Survey  
Control by USGS, USC&GS, and City of Milwaukee  
Topography from aerial photographs by photogrammetric methods  
Aerial photographs taken 1955. Field check 1958  
Hydrography compiled from U.S. Lake Survey chart 743 (1957)  
Polyconic projection. 1927 North American datum  
10,000-foot grid based on Wisconsin coordinate system, south zone  
1000-meter Universal Transverse Mercator grid ticks,  
zone 16, shown in blue  
Red tint indicates areas in which only landmark buildings are shown  
Revisions shown in purple compiled from aerial photographs  
taken 1971. This information not field checked  
Purple tint indicates extension of urban areas



SCALE 1:24,000  
CONTOUR INTERVAL 10 FEET  
DATUM IS MEAN SEA LEVEL  
DEPTH CURVES AND SOUNDINGS IN FEET—DATUM IS 578 FEET  
THIS MAP COMPLIES WITH NATIONAL MAP ACCURACY STANDARDS  
FOR SALE BY U.S. GEOLOGICAL SURVEY, WASHINGTON, D.C. 20242  
AND BY THE WISCONSIN GEOLOGICAL AND NATURAL HISTORY SURVEY, MADISON, WISCONSIN 53706  
A FOLDER DESCRIBING TOPOGRAPHIC MAPS AND SYMBOLS IS AVAILABLE ON REQUEST

ROAD CLASSIFICATION

Heavy-duty	Light-duty
Medium-duty	Unimproved dirt

U.S. Route  
State Route  
Interstate Route

MAP AND AIR PHOTO LIBRARY  
FEB 15 1973  
QUADRANGLE LOCATION  
GREENDALE, WIS.  
NW 1/4 SOUTH MILWAUKEE 15' QUADRANGLE  
N4252.5—W8752.5/7.5  
1958  
PHOTOREVISED 1971  
AMS 3469 IV NW—SERIES V861

1971  
copy  
1-1