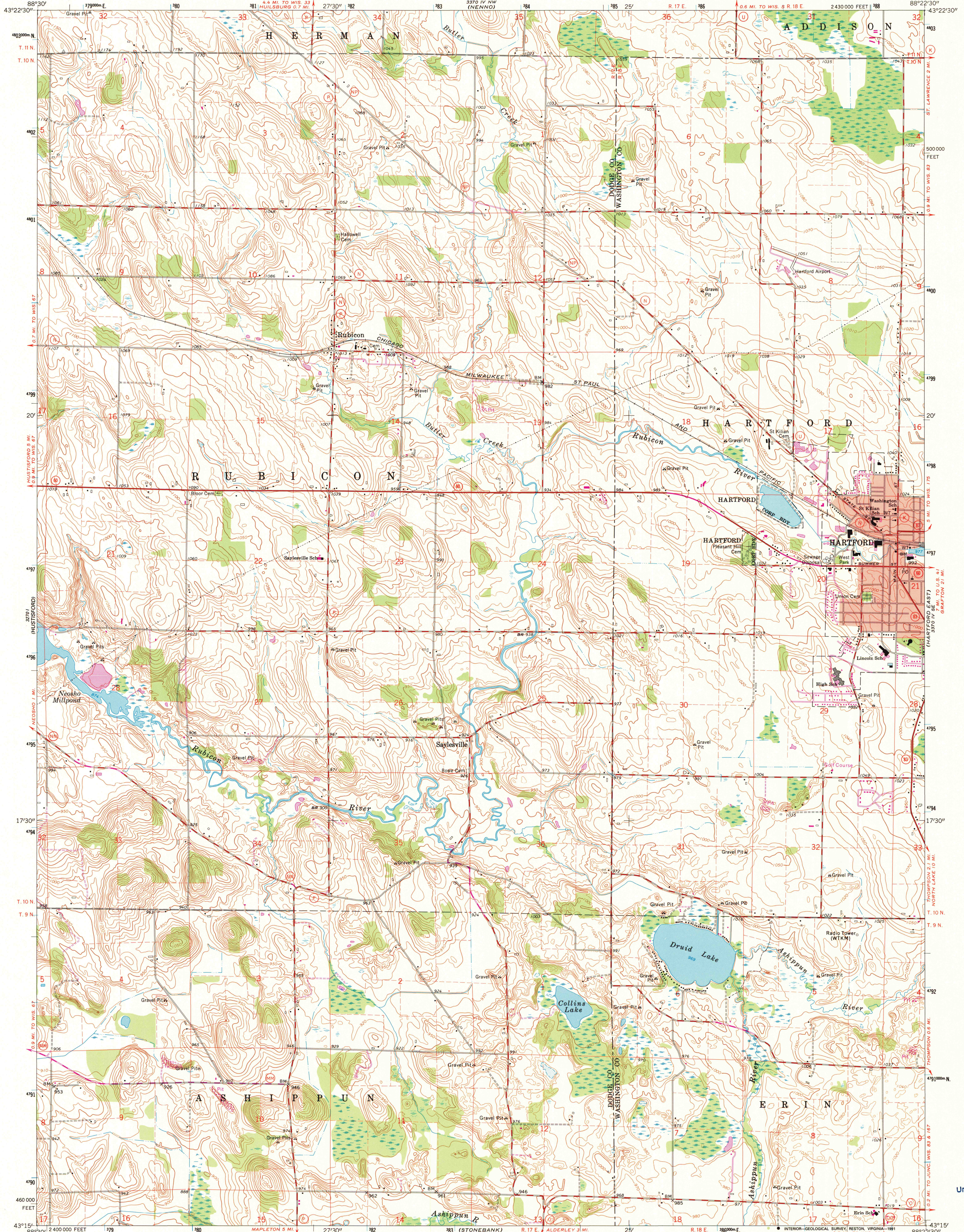


UNITED STATES
DEPARTMENT OF THE INTERIOR
GEOLOGICAL SURVEY

HARTFORD WEST QUADRANGLE
WISCONSIN
7.5 MINUTE SERIES (TOPOGRAPHIC)
SW/4 HARTFORD 15' QUADRANGLE

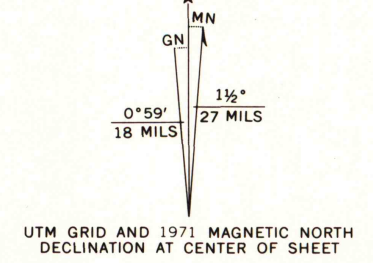


Maped, edited, and published by the Geological Survey
Control by USGS and USC&GS

Topography by photogrammetric methods from aerial
photographs taken 1954-55. Field checked 1959
Polyconic projection. 1927 North American datum
10,000-foot grid based on Wisconsin coordinate system, south zone
1000-meter Universal Transverse Mercator grid ticks,
zone 16, shown in blue

Red tint indicates area in which only landmark buildings are shown
Fine red dashed lines indicate selected fence and field lines where
generally visible on aerial photographs. This information is unchecked

Revisions shown in purple compiled from aerial photographs
taken 1971. This information not field checked
Map photosinspected 1976
No major culture or drainage changes observed



SCALE 1:24,000
CONTOUR INTERVAL 10 FEET
NATIONAL GEODETIC VERTICAL DATUM OF 1929

THIS MAP COMPLIES WITH NATIONAL MAP ACCURACY STANDARDS
FOR SALE BY U.S. GEOLOGICAL SURVEY, DENVER, COLORADO 80225, OR RESTON, VIRGINIA 22092
AND WISCONSIN GEOLOGICAL AND NATURAL HISTORY SURVEY, MADISON, WISCONSIN 53706
A FOLDER DESCRIBING TOPOGRAPHIC MAPS AND SYMBOLS IS AVAILABLE ON REQUEST

U.S. Regional
Depository Copy
DO NOT DISCARD



ROAD CLASSIFICATION
Primary highway, hard surface ——— Light-duty road, hard or improved surface
Secondary highway, hard surface ——— Unimproved road ———
hard surface ———
Interstate Route U. S. Route State Route

HARTFORD WEST, WIS.
SW/4 HARTFORD 15' QUADRANGLE
43088-C4-TF-024
PHOTOINSPECTED 1976
1959
PHOTOREVISED 1971
DMA 3370 IV SW-SERIES V861

A.H. ROBINSON
MAP LIBRARY
DEC 04 1991
University of Wisconsin
Madison

1976
Copy
1-1