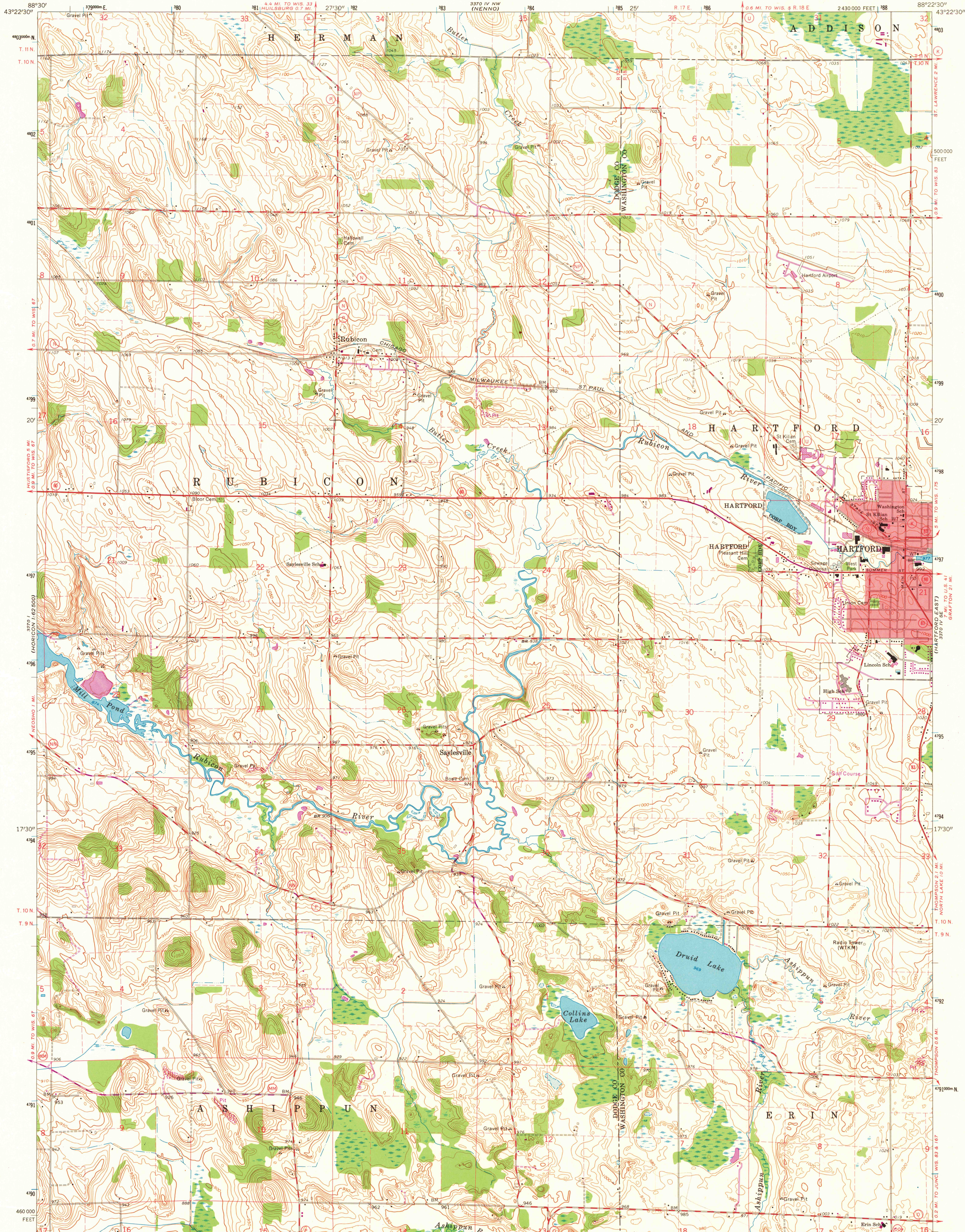


UNITED STATES
DEPARTMENT OF THE INTERIOR
GEOLOGICAL SURVEY

HARTFORD WEST QUADRANGLE
WISCONSIN
7.5 MINUTE SERIES (TOPOGRAPHIC)
SW 1/4 HARTFORD 15' QUADRANGLE



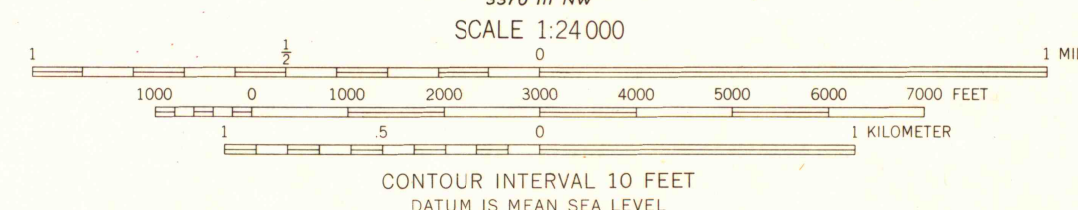
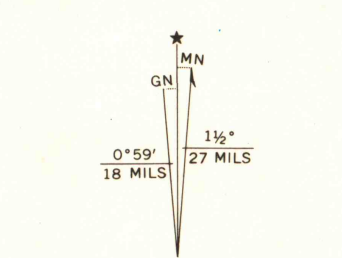
Mapped, edited, and published by the Geological Survey
Control by USGS and USC&GS

Topography by photogrammetric methods from aerial
photographs taken 1954-55. Field checked 1959

Polyconic projection. 1927 North American datum
10,000-foot grid based on Wisconsin coordinate system, south zone
1000-meter Universal Transverse Mercator grid ticks,
zone 16, shown in blue

Red tint indicates area in which only landmark buildings are shown
Fine red dashed lines indicate selected fence and field lines where
generally visible on aerial photographs. This information is unchecked

Revisions shown in purple compiled from aerial photographs
taken 1971. This information not field checked



ROAD CLASSIFICATION	
Heavy-duty	Light-duty
Medium-duty	Unimproved dirt
State Route	



HARTFORD WEST, WIS.
SW 1/4 HARTFORD 15' QUADRANGLE
N4315-W8822.5/7.5

1959
PHOTOREVISED 1971
AMS 3370 IV SW-SERIES V861

MAP AND AIR PHOTO
LIBRARY

MAR 27 1973

University of Wisconsin

1971
Copy
1-1