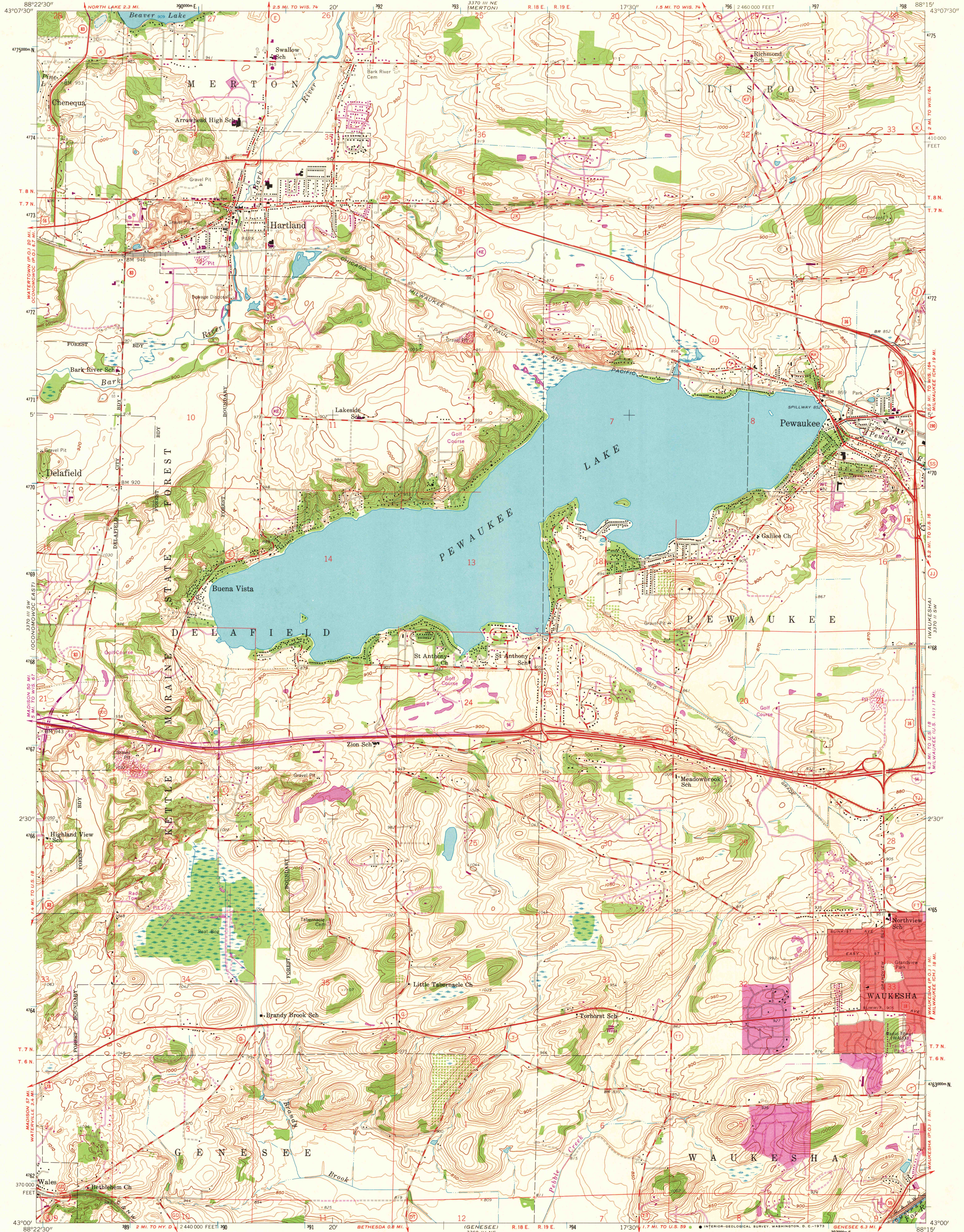


UNITED STATES  
DEPARTMENT OF THE INTERIOR  
GEOLOGICAL SURVEY

HARTLAND QUADRANGLE  
WISCONSIN-WAUKESHA CO.  
7.5 MINUTE SERIES (TOPOGRAPHIC)  
SE 1/4 HARTLAND 15' QUADRANGLE



Maped, edited, and published by the Geological Survey

Control by USGS and USC&GS

Topography from aerial photographs by photogrammetric methods

Aerial photographs taken 1954-1955. Field check 1959

Polycyclic projection. 1927 North American datum

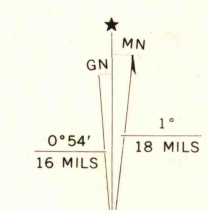
10,000-foot grid based on Wisconsin coordinate system, south zone

1000-meter Universal Transverse Mercator grid ticks, zone 16, shown in blue

Red tint indicates areas in which only landmark buildings are shown

Revisions shown in purple compiled from aerial photographs taken 1971. This information not field checked

Purple tint indicates extension of urban areas



SCALE 1:24 000

CONTOUR INTERVAL 10 FEET

DATUM IS MEAN SEA LEVEL

THIS MAP COMPLIES WITH NATIONAL MAP ACCURACY STANDARDS  
FOR SALE BY U.S. GEOLOGICAL SURVEY, WASHINGTON, D. C. 20242  
AND BY THE WISCONSIN GEOLOGICAL AND NATURAL HISTORY SURVEY, MADISON, WISCONSIN 53706  
A FOLDER DESCRIBING TOPOGRAPHIC MAPS AND SYMBOLS IS AVAILABLE ON REQUEST



ROAD CLASSIFICATION  
Heavy-duty ——— Light-duty ———  
Medium-duty ——— Unimproved dirt ———  
U.S. Route ——— State Route ———  
Interstate Route ———

HARTLAND, WIS.  
SE 1/4 HARTLAND 15' QUADRANGLE  
N 4300-W 8815/7.5

1959  
PHOTOREVISED 1971  
AMS 3370 III SE-SERIES V861

MAP AND AIR PHOTO  
LIBRARY

MAR 27 1973

University of Wisconsin

1971  
Copy  
1-1