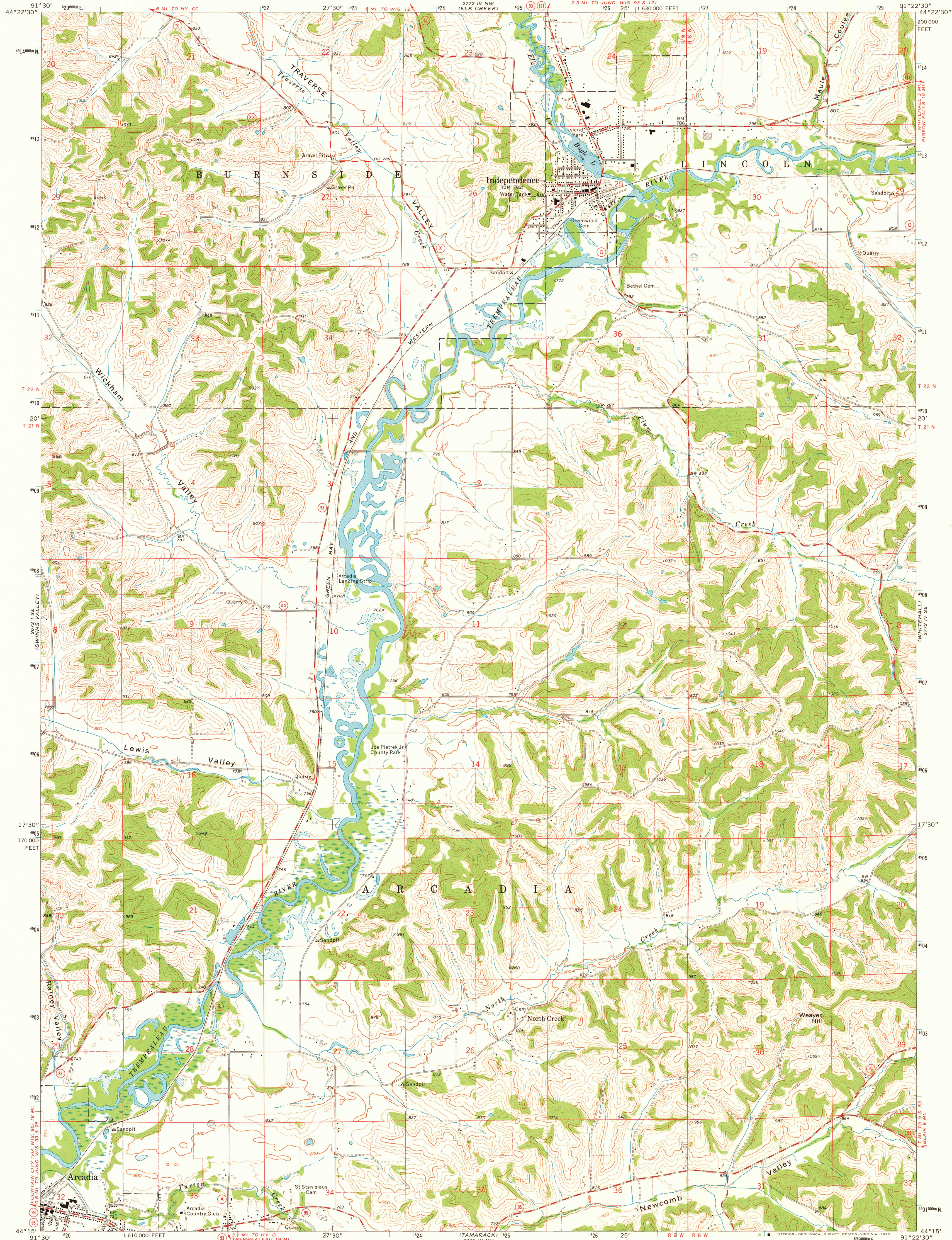


UNITED STATES
DEPARTMENT OF THE INTERIOR
GEOLOGICAL SURVEY

STATE OF WISCONSIN
DIVISION OF HIGHWAYS
GEOLOGICAL AND NATURAL HISTORY SURVEY

INDEPENDENCE QUADRANGLE
WISCONSIN—TREMPEALEAU CO.
7.5 MINUTE SERIES (TOPOGRAPHIC)



Maped, edited, and published by the Geological Survey in cooperation with the Wisconsin Division of Highways and Wisconsin Geological and Natural History Survey. Control by USGS and NOS/NOAA.

Topography by photogrammetric methods from aerial photographs taken 1973. Field checked 1973. Hydrography compiled from information furnished by Wisconsin Department of Natural Resources. Projection and 10,000-foot grid ticks: Wisconsin coordinate system, central zone (Lambert conformal conic). 1000-metre Universal Transverse Mercator grid ticks, zone 15, shown in blue. 1927 North American datum. Fine red dashed lines indicate selected fence and field lines where generally visible on aerial photographs. This information is unchecked.

UTM GRID AND 1973 MAGNETIC NORTH DECLINATION AT CENTER OF SHEET

SCALE 1:24,000
CONTOUR INTERVAL 20 FEET
DOTTED LINES REPRESENT 10-FOOT CONTOURS
NATIONAL GEODETIC VERTICAL DATUM OF 1929
THIS MAP COMPLIES WITH NATIONAL MAP ACCURACY STANDARDS FOR SALE BY U.S. GEOLOGICAL SURVEY, RESTON, VIRGINIA 22092
AND BY THE WISCONSIN GEOLOGICAL AND NATURAL HISTORY SURVEY, MADISON, WISCONSIN 53706
A FOLDER DESCRIBING TOPOGRAPHIC MAPS AND SYMBOLS IS AVAILABLE ON REQUEST



MAP AND AIR PHOTO
LIBRARY

FEB 9 - 1976

University of Wisconsin

ROAD CLASSIFICATION
Primary highway, hard surface ——— Light-duty road, hard or improved surface
Secondary highway, hard surface ——— Unimproved road ———
Interstate Route ——— U. S. Route ——— State Route

INDEPENDENCE, WIS.
SW 1/4 WHITEHALL 15' QUADRANGLE
N4415-W9122.5/7.5

1973

AMS 2772 IV SW—SERIES V861

1973
copy
1-1