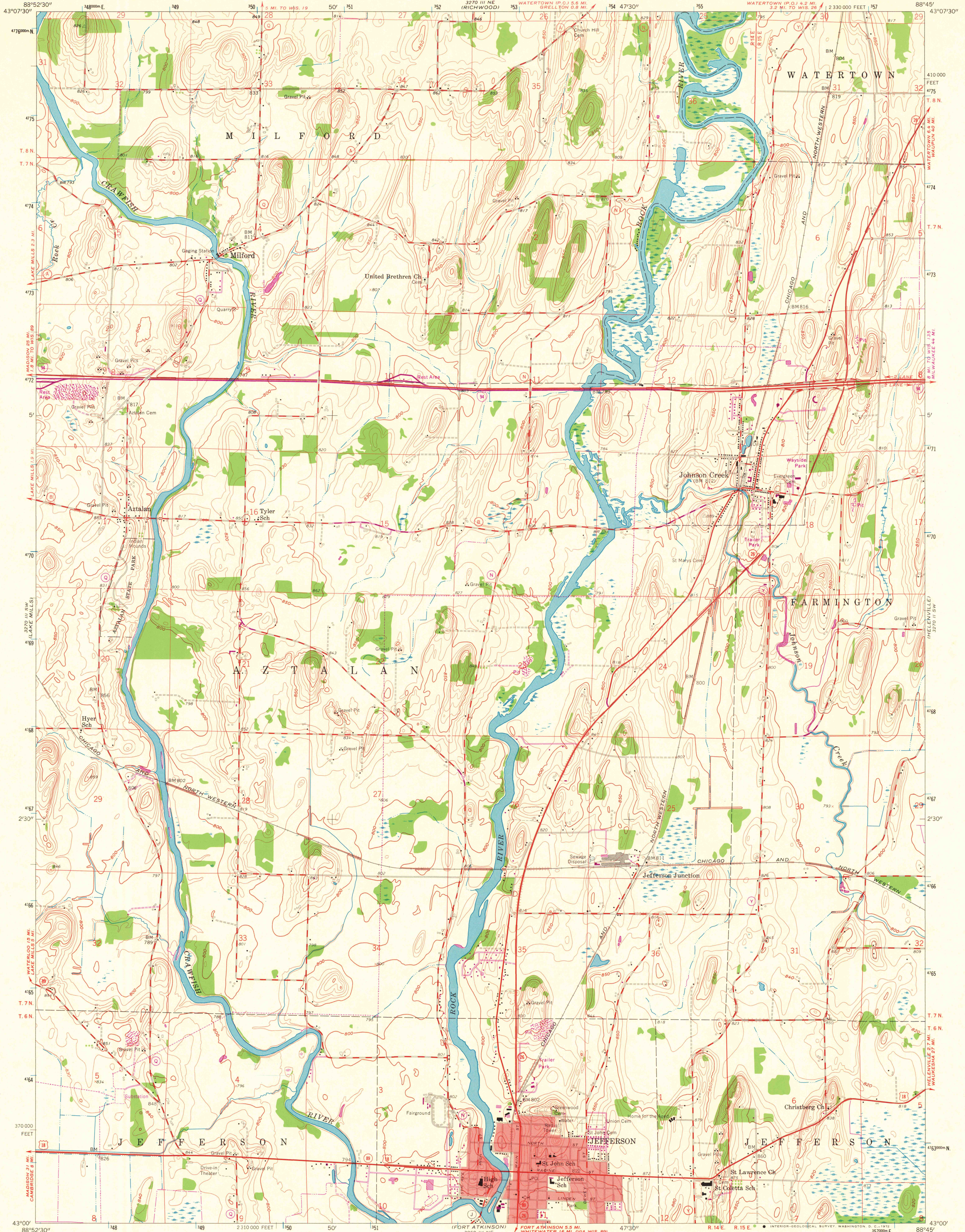


UNITED STATES
DEPARTMENT OF THE INTERIOR
GEOLOGICAL SURVEY

JEFFERSON QUADRANGLE
WISCONSIN-JEFFERSON CO.
7.5 MINUTE SERIES (TOPOGRAPHIC)
SE/4 WATERLOO 15' QUADRANGLE

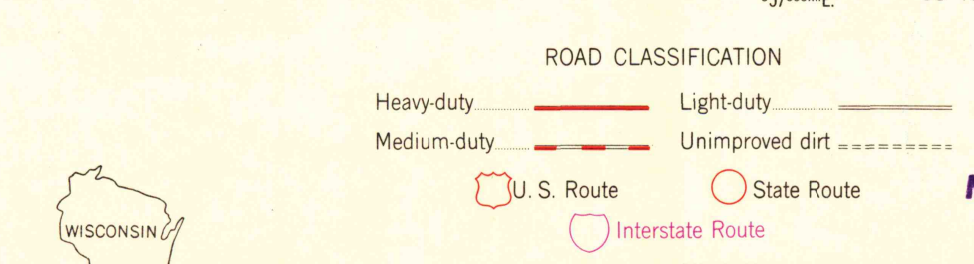
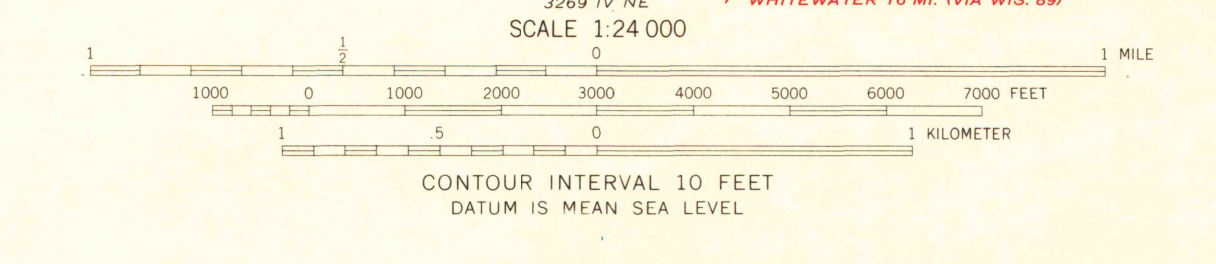
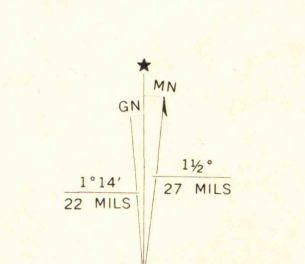


Mapped, edited, and published by the Geological Survey
Control by USGS and USC&GS

Topography from aerial photographs by photogrammetric methods
Aerial photographs taken 1954-1955. Field check 1959

Polyconic projection. 1927 North American datum
10,000-foot grid based on Wisconsin coordinate system, south zone
1000-meter Universal Transverse Mercator grid ticks,
zone 16, shown in blue

Red tint indicates areas in which only landmark buildings are shown
Revisions shown in purple compiled from aerial photographs
taken 1971. This information not field checked



THIS MAP COMPLIES WITH NATIONAL MAP ACCURACY STANDARDS
FOR SALE BY U.S. GEOLOGICAL SURVEY, WASHINGTON, D.C. 20242
AND BY THE WISCONSIN GEOLOGICAL AND NATURAL HISTORY SURVEY, MADISON, WISCONSIN 53706
A FOLDER DESCRIBING TOPOGRAPHIC MAPS AND SYMBOLS IS AVAILABLE ON REQUEST

JEFFERSON, WIS.
SE/4 WATERLOO 15' QUADRANGLE
N 4300-W 8845/7.5
1959
PHOTOREVISED 1971
AMS 3270 III SE-SERIES V861

MAP AND AIR PHOTO
AUG 17 1972
University of Wisconsin