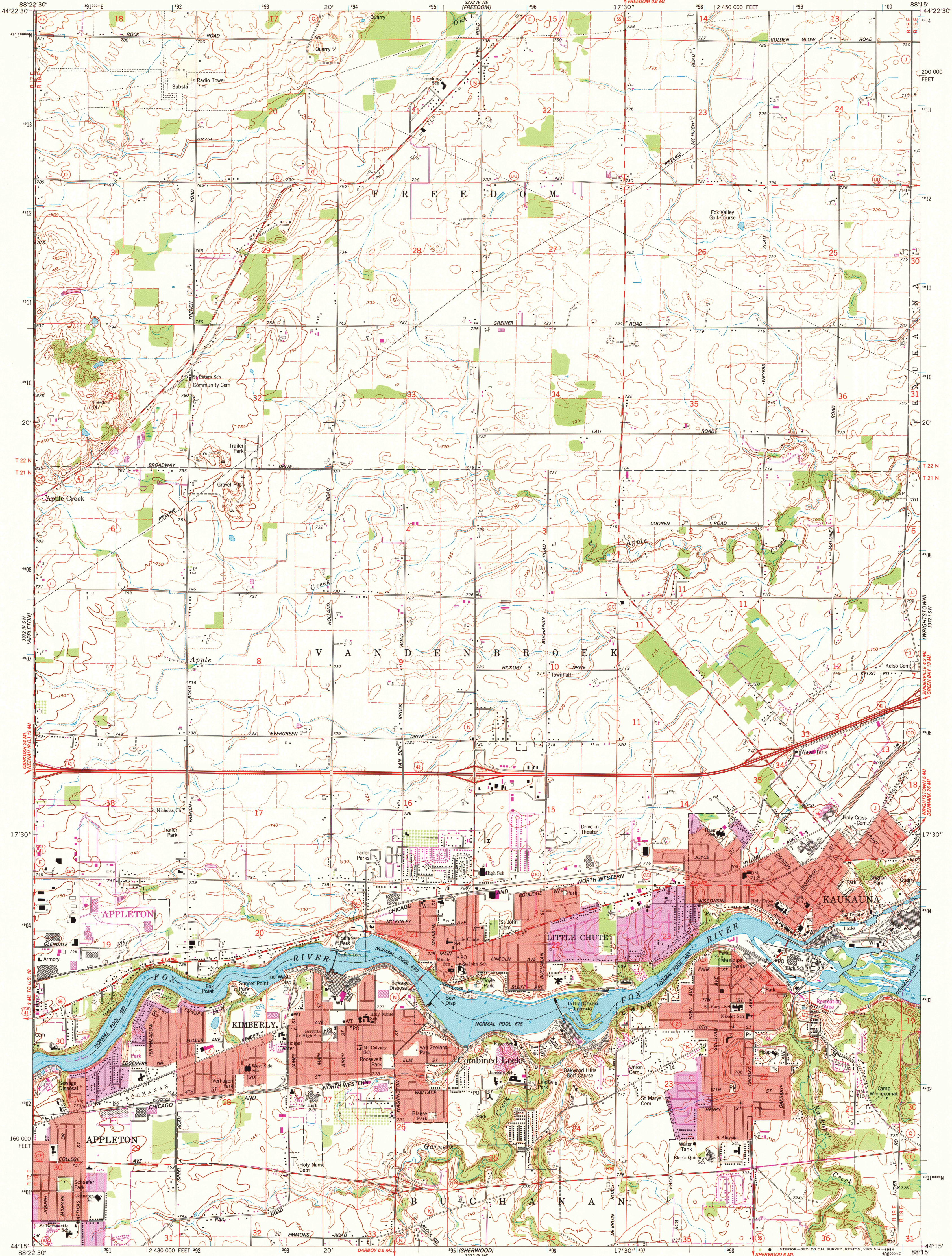


UNITED STATES
DEPARTMENT OF THE INTERIOR
GEOLOGICAL SURVEY

KAUKAUNA QUADRANGLE
WISCONSIN—OUTAGAMIE CO.
7.5 MINUTE SERIES (TOPOGRAPHIC)
SE/4 APPLETON 15' QUADRANGLE



Maped, edited, and published by the Geological Survey
Control by USGS and NOS/NOAA

Topography by photogrammetric methods from aerial
photographs taken 1973. Field checked 1974

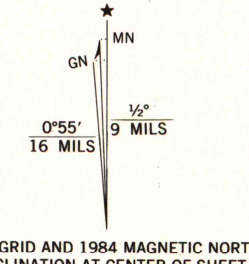
Selected hydrographic data compiled from U. S. Lake Survey Chart 720
(1973). This information is not intended for navigational purposes

Projection and 10,000-foot grid ticks: Wisconsin coordinate
system, central zone (Lambert conformal conic)

1000-meter Universal Transverse Mercator grid ticks,
zone 16, shown in blue. 1927 North American datum

Red tint indicates areas in which only landmark buildings are shown

To place on the predicted North American Datum 1983,
move the projection lines 5 meters north and
8 meters east as shown by dashed corner ticks



SCALE 1:24 000

1 000 0 1000 2000 3000 4000 5000 6000 7000 FEET

1 5 10 15 20 25 30 35 40 45 50 KILOMETER

CONTOUR INTERVAL 10 FEET
DOTTED LINES REPRESENT 5-FOOT CONTOURS
NATIONAL GEODETIC VERTICAL DATUM OF 1929

DEPTH CURVES AND SOUNDINGS IN FEET—DATUM IS NORMAL POOL LEVEL

THIS MAP COMPLIES WITH NATIONAL MAP ACCURACY STANDARDS
FOR SALE BY U. S. GEOLOGICAL SURVEY, RESTON, VIRGINIA 22092

AND WISCONSIN GEOLOGICAL AND NATURAL HISTORY SURVEY, MADISON, WISCONSIN 53706
A FOLDER DESCRIBING TOPOGRAPHIC MAPS AND SYMBOLS IS AVAILABLE ON REQUEST



QUADRANGLE LOCATION

ROAD CLASSIFICATION
Primary highway, hard surface
Secondary highway, hard surface
Unimproved road
Interstate Route
U. S. Route
State Route

KAUKAUNA, WIS.
SE/4 APPLETON 15' QUADRANGLE
44088-C3-TF-024

1974
PHOTOREVISED 1984
DMA 3372 IV SE—SERIES V861

Revisions shown in purple compiled from aerial
photographs taken 1982 and other sources
This information not field checked. Map edited 1984
Purple tint indicates extension of urban area

U. S. Regional
Depository Copy
DO NOT DISCARD

A.H. ROBINSON
MAP LIBRARY
MAY 31 1985

University of Wisconsin
Madison

1984
COPY
1-1