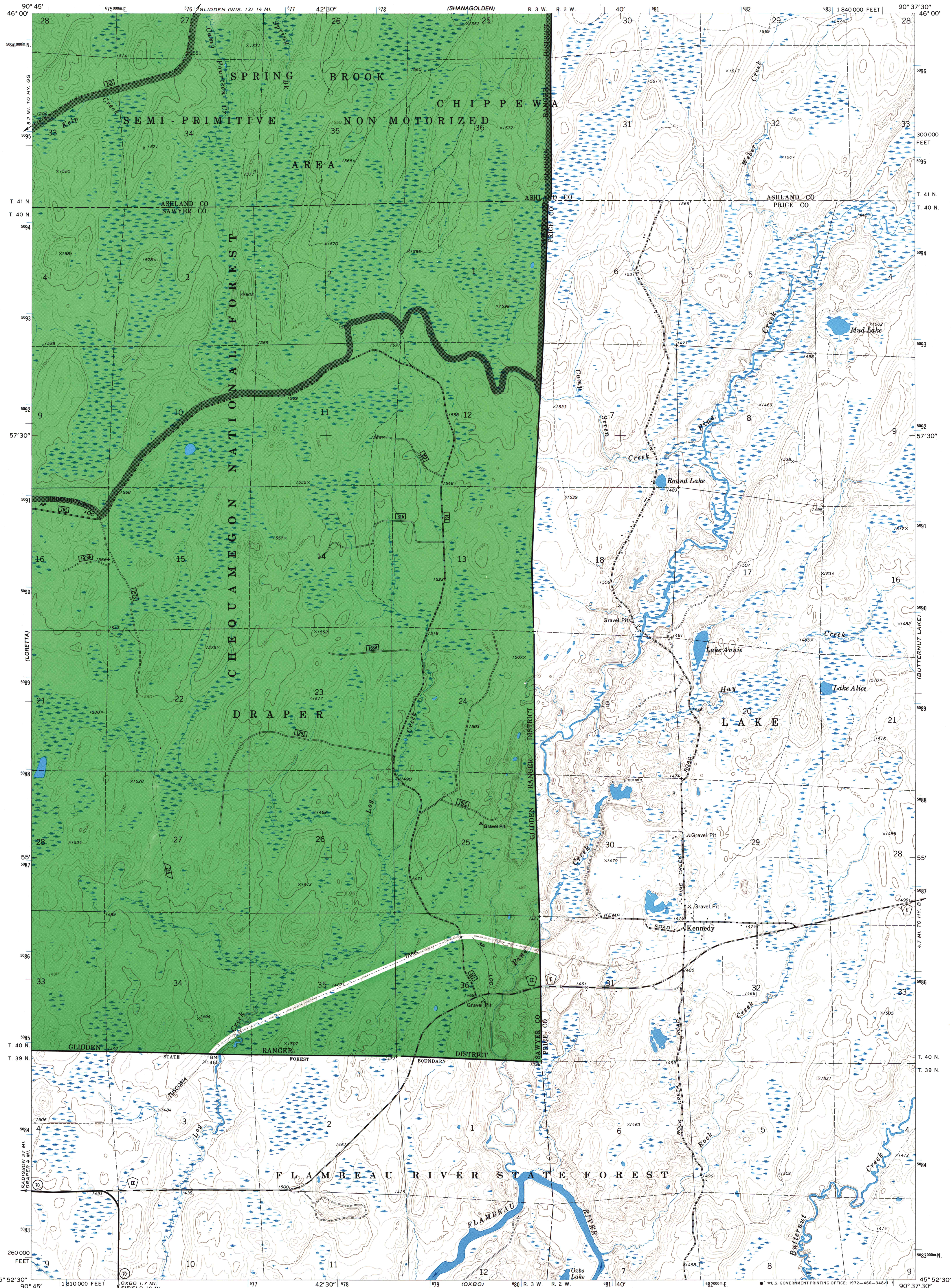
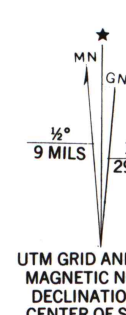


UNITED STATES  
DEPARTMENT OF THE INTERIOR  
GEOLOGICAL SURVEY  
MODIFIED FOR USDA FOREST SERVICE USE

KENNEDY QUADRANGLE  
WISCONSIN  
7.5 MINUTE SERIES (TOPOGRAPHIC)  
NW/4 KENNEDY 15' QUADRANGLE

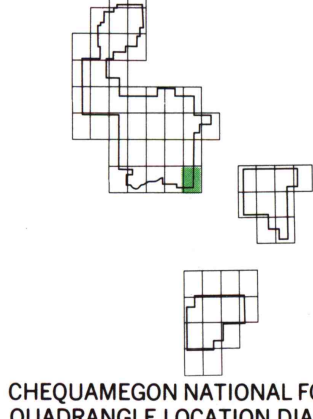


Base map prepared by the U.S. Geological Survey in cooperation with the Wisconsin Highway Commission and Wisconsin Geological and Natural History Survey. Control by USGS and USC&GS. Topography by photogrammetric methods from aerial photographs taken 1969. Field checked 1970. Polyconic projection. 1927 North American datum 10,000-foot grid based on Wisconsin coordinate system, north zone 1000-meter Universal Transverse Mercator grid ticks, zone 15, shown in blue. Modification to USGS base map by the Geometrics Service Center from 1986 and 1988 aerial photography and 1990 correction guides furnished by the Eastern Region. Landnet revised according to additional Forest Service Evidence.



- SCALE 1:24,000
- CONTOUR INTERVAL 10 FEET  
DATUM IS MEAN SEA LEVEL
- |  |                       |
|--|-----------------------|
| National Forest Boundary                 | Primary Highway       |
| National Forest Land as of 1990          | Secondary Highway     |
| TOWNSHIP AND SECTION LINE CLASSIFICATION | Improved Road, Paved  |
| Surveyed, Location Reliable              | Improved Road, Gravel |
| Surveyed, Location Approximate           | Improved Road, Dirt   |
| Unsurveyed, Protraction                  | Unimproved Road, Dirt |
|  | Trail                 |

- |      |                      |
|------|----------------------|
| 10   | Interstate Highway   |
| 21   | U.S. Highway         |
| 50   | State Highway        |
| 357  | County Road          |
| 65   | Primary Forest Route |
| 4037 | Forest Road          |
| 3387 | Forest Trail         |



Copies of this map are available for purchase at Forest Supervisor's Headquarters 1170 South 4th Avenue Park Falls, WI 54552

KENNEDY, WIS.  
NW/4 KENNEDY 15' QUADRANGLE  
N4552.5-W9037.5/7.5  
1970  
DMA 2875 1 NW-SERIES V861

A.H. ROBINSON  
MAP LIBRARY  
NOV - 6 1995  
University of Wisconsin  
Madison

U.S. Depository Copy  
Do Not Discard  
JAN 05 1993

6  
4122  
.25  
524  
.055  
Sh.37

A 13.28: 4217/985/45090-H6