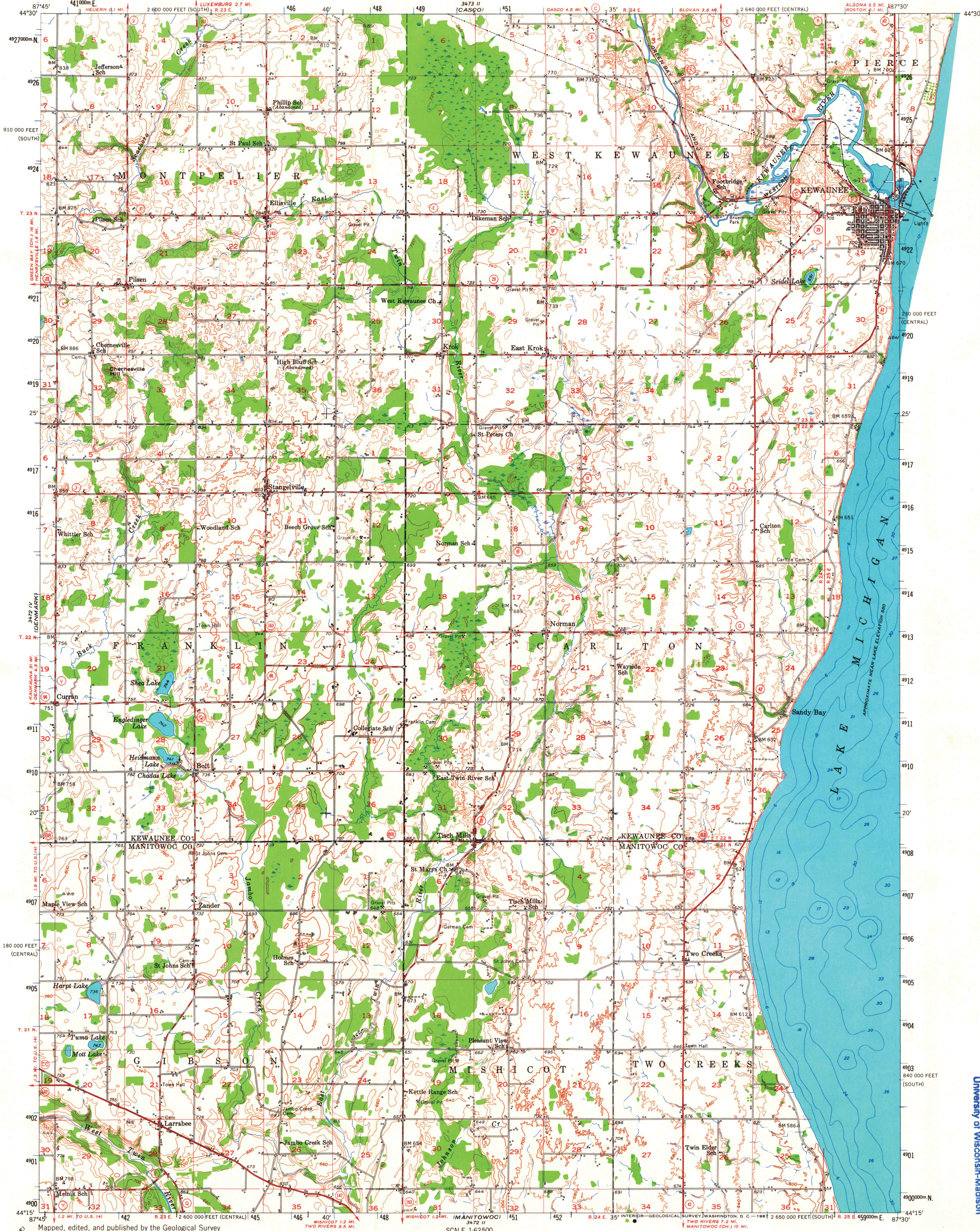
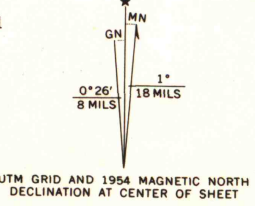


UNITED STATES
DEPARTMENT OF THE INTERIOR
GEOLOGICAL SURVEY

KEWAUNEE QUADRANGLE
WISCONSIN
15 MINUTE SERIES (TOPOGRAPHIC)



Maped, edited, and published by the Geological Survey
Control by USGS, USC&GS, and USCE
Topography from aerial photographs by Kelsh plotter
and by planimetric surveys 1954. Aerial photographs taken 1951
Hydrography from U. S. Lake Survey Chart 73 (1:120 000)
Polyconic projection. 1927 North American datum
10,000-foot grids based on Wisconsin coordinate system,
central and south zones
1000-meter Universal Transverse Mercator grid ticks,
zone 16, shown in blue



SCALE 1:62500
CONTOUR INTERVAL 20 FEET
DATUM IS MEAN SEA LEVEL
DEPTH CURVES AND SOUNDINGS IN FEET—DATUM IS 578 FEET

ROAD CLASSIFICATION
Heavy-duty ——— Light-duty ———
Medium-duty ——— Unimproved dirt ———
U. S. Route ——— State Route ———



THIS MAP COMPLIES WITH NATIONAL MAP ACCURACY STANDARDS
FOR SALE BY U. S. GEOLOGICAL SURVEY, WASHINGTON, D. C. 20242
AND WISCONSIN GEOLOGICAL AND NATURAL HISTORY SURVEY, MADISON, WISCONSIN 53706
A FOLDER DESCRIBING TOPOGRAPHIC MAPS AND SYMBOLS IS AVAILABLE ON REQUEST

KEWAUNEE, WIS.
N4415-W830/15
1954

AMS 3472 I—SERIES V761

JUL 27 2005

ARTHUR H. ROBINSON MAP LIBRARY
University of Wisconsin-Madison

1954
copy
1-1