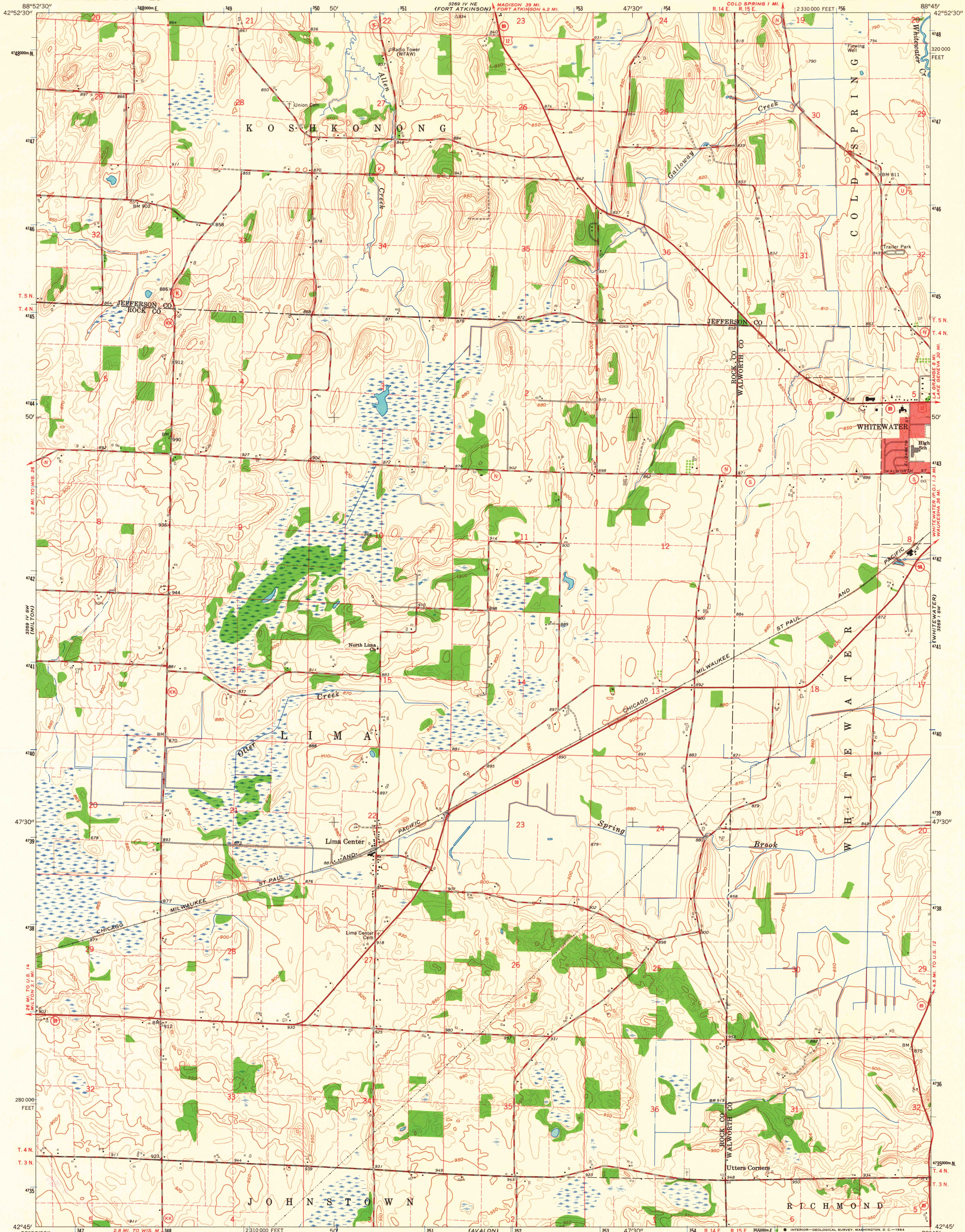
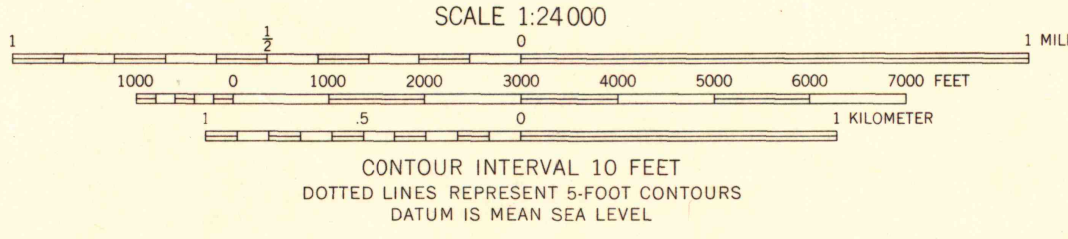


UNITED STATES  
DEPARTMENT OF THE INTERIOR  
GEOLOGICAL SURVEY

LIMA CENTER QUADRANGLE  
WISCONSIN  
7.5 MINUTE SERIES (TOPOGRAPHIC)  
SE 1/4 FORT ATKINSON 15' QUADRANGLE



Mapped, edited, and published by the Geological Survey  
Control by USGS and USC&GS  
Topography by photogrammetric methods from aerial  
photographs taken 1955. Field checked 1960  
Polyconic projection. 1927 North American datum  
10,000-foot grid based on Wisconsin coordinate system, south zone  
1000-meter Universal Transverse Mercator grid ticks,  
zone 16, shown in blue  
Red tint indicates area in which only landmark buildings are shown  
Fine red dashed lines indicate selected fence and field lines where  
generally visible on aerial photographs. This information is unchecked



ROAD CLASSIFICATION  
Heavy-duty ——— Light-duty ———  
Medium-duty ——— Unimproved dirt ———  
U. S. Route ——— State Route ———

THIS MAP COMPLIES WITH NATIONAL MAP ACCURACY STANDARDS  
FOR SALE BY U. S. GEOLOGICAL SURVEY, WASHINGTON 25, D. C.  
AND BY THE WISCONSIN GEOLOGICAL AND NATURAL HISTORY SURVEY, MADISON 6, WISCONSIN  
A FOLDER DESCRIBING TOPOGRAPHIC MAPS AND SYMBOLS IS AVAILABLE ON REQUEST

LIMA CENTER, WIS.  
SE 1/4 FORT ATKINSON 15' QUADRANGLE  
N4245—W8845/7.5

1960  
AMS 3269 IV SE—SERIES V861

LIBRARY USE ONLY

1960  
Copy  
1-1