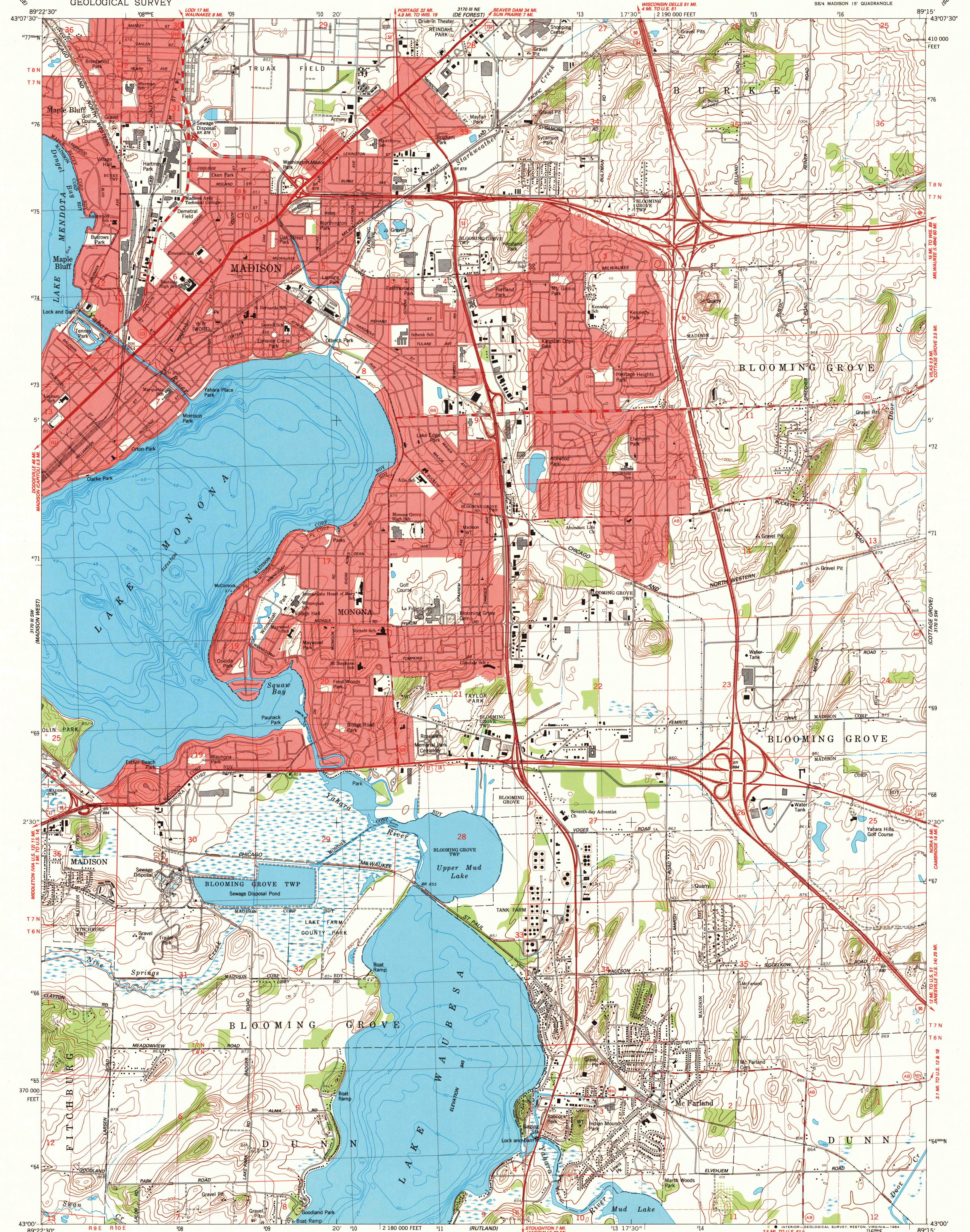
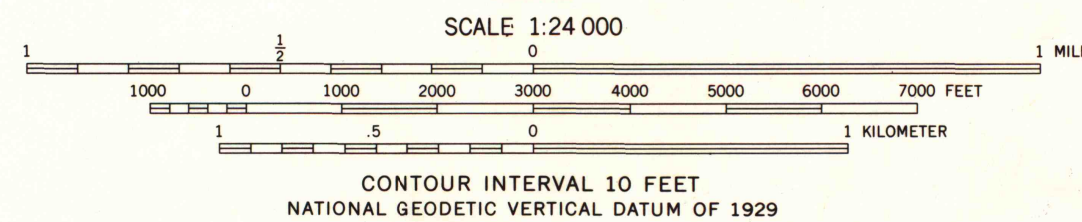
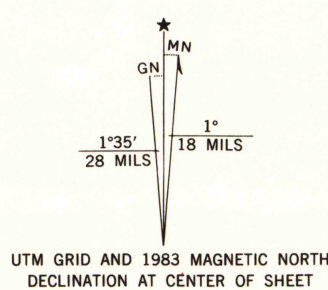


UNITED STATES  
DEPARTMENT OF THE INTERIOR  
GEOLOGICAL SURVEY

MADISON EAST QUADRANGLE  
WISCONSIN-DANE CO.  
7.5 MINUTE SERIES (TOPOGRAPHIC)  
SE/4 MADISON 15' QUADRANGLE



Mapped, edited, and published by the Geological Survey  
Control by USGS and NOS/NOAA  
Topography by photogrammetric methods from aerial photographs  
taken 1957. Field checked 1959. Revised from aerial photographs  
taken 1978 and 1980. Field checked 1983. Map edited 1983  
Polyconic projection. 1927 North American Datum  
10,000-foot grid based on Wisconsin coordinate system, south zone  
1000-meter Universal Transverse Mercator grid, zone 16  
To place on the predicted North American Datum 1983,  
move the projection lines 4 meters north and  
9 meters east as shown by dashed corner ticks  
Hydrography compiled from information furnished by  
Wisconsin Department of Natural Resources  
Red tint indicates areas in which only landmark buildings are shown  
Fine red dashed lines indicate selected fence and field lines where  
generally visible on aerial photographs. This information is unchecked



THIS MAP COMPLIES WITH NATIONAL MAP ACCURACY STANDARDS  
FOR SALE BY U. S. GEOLOGICAL SURVEY, RESTON, VIRGINIA 22092  
AND WISCONSIN GEOLOGICAL AND NATURAL HISTORY SURVEY, MADISON, WISCONSIN 53706  
A FOLDER DESCRIBING TOPOGRAPHIC MAPS AND SYMBOLS IS AVAILABLE ON REQUEST

ROAD CLASSIFICATION  
Primary highway, hard surface  
Secondary highway, hard surface  
Interstate Route  
U. S. Route  
State Route  
Light-duty road, hard or improved surface  
Unimproved road

A.H. ROBINSON  
MAP LIBRARY  
FEB 07 1985

MADISON EAST, WIS.  
SE/4 MADISON 15' QUADRANGLE  
43089-A3-TF-024

1983  
DMA 3170 III SE-SERIES V861

NON-CIRCULATING

1983  
COPY  
1-2