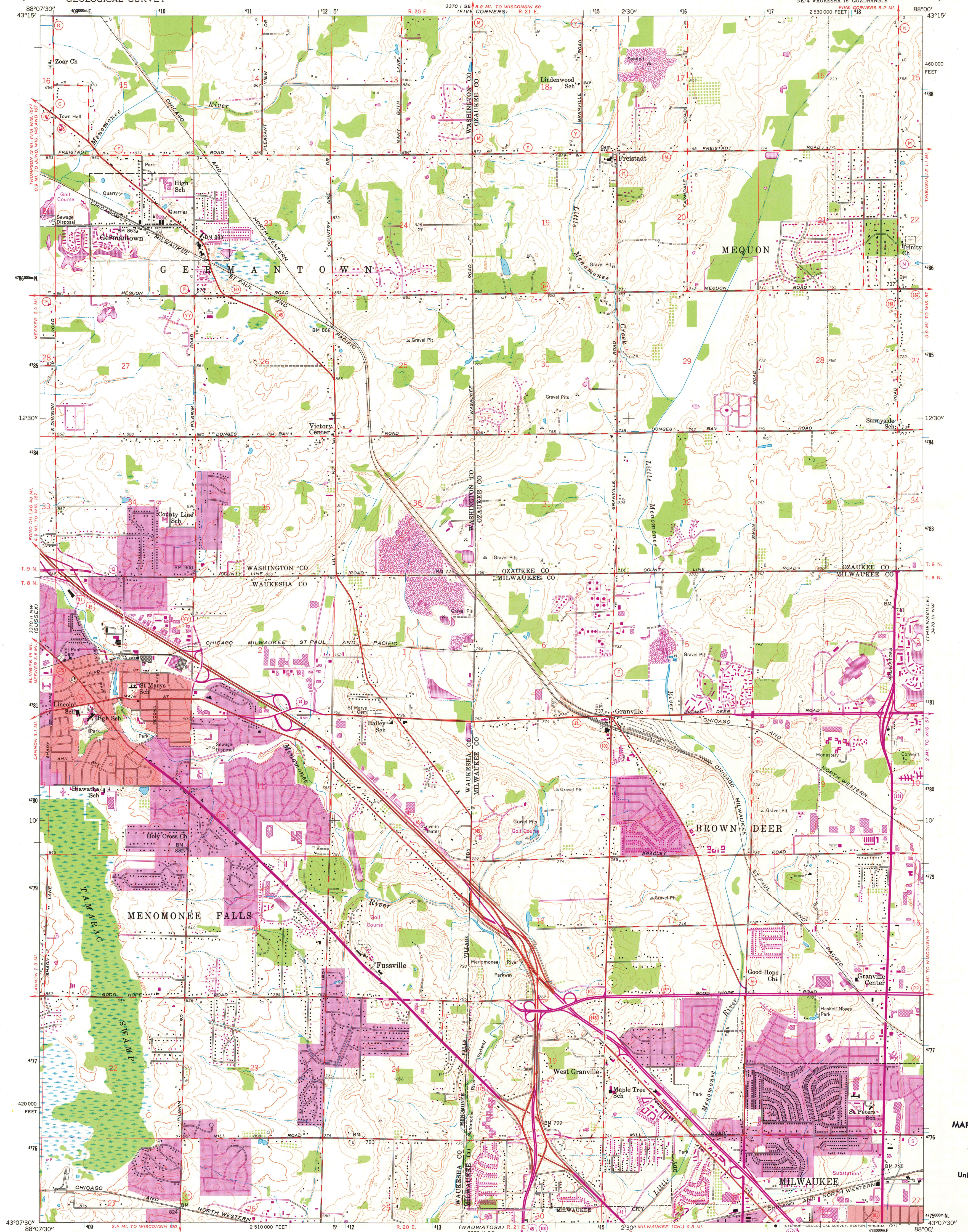
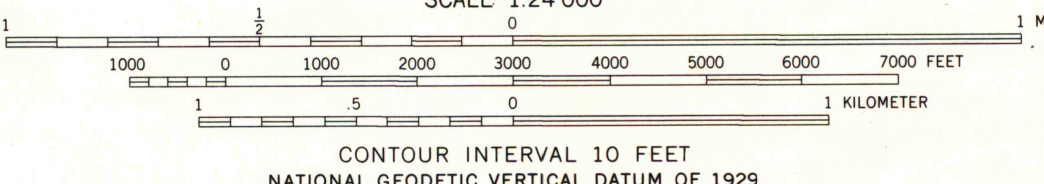


UNITED STATES
DEPARTMENT OF THE INTERIOR
GEOLOGICAL SURVEY

MENOMONEE FALLS QUADRANGLE
WISCONSIN
7.5 MINUTE SERIES (TOPOGRAPHIC)
NE 1/4 WAUKESHA 15' QUADRANGLE
FIVE CORNERS 5.2 MI.
2 530 000 FEET



Mapped, edited, and published by the Geological Survey
Control by USGS and USC&GS
Topography from aerial photographs by photogrammetric methods
Aerial photographs taken 1954 and 1955. Field check 1958
Polyconic projection, 1927 North American datum
10,000-foot grid based on Wisconsin coordinate system, south zone
1000-meter Universal Transverse Mercator grid ticks,
zone 16, shown in blue
Red tint indicates areas in which only landmark buildings are shown
Revisions shown in purple compiled from aerial photographs
taken 1971 and 1976. This information not field checked
Purple tint indicates extension of urban areas



ROAD CLASSIFICATION
Heavy-duty ——— Light-duty ———
Medium-duty ——— Unimproved dirt ———
U. S. Route ——— State Route ———



MENOMONEE FALLS, WIS.
NE 1/4 WAUKESHA 15' QUADRANGLE
N4307.5-W8800/7.5
1958
PHOTOREVISED 1971 AND 1976
AMS 3370 II NE-SERIES V861

MAP AND AIR PHOTO
LIBRARY
NOV 7 - 1978
University of Wisconsin
Madison

1976
copy
1-1