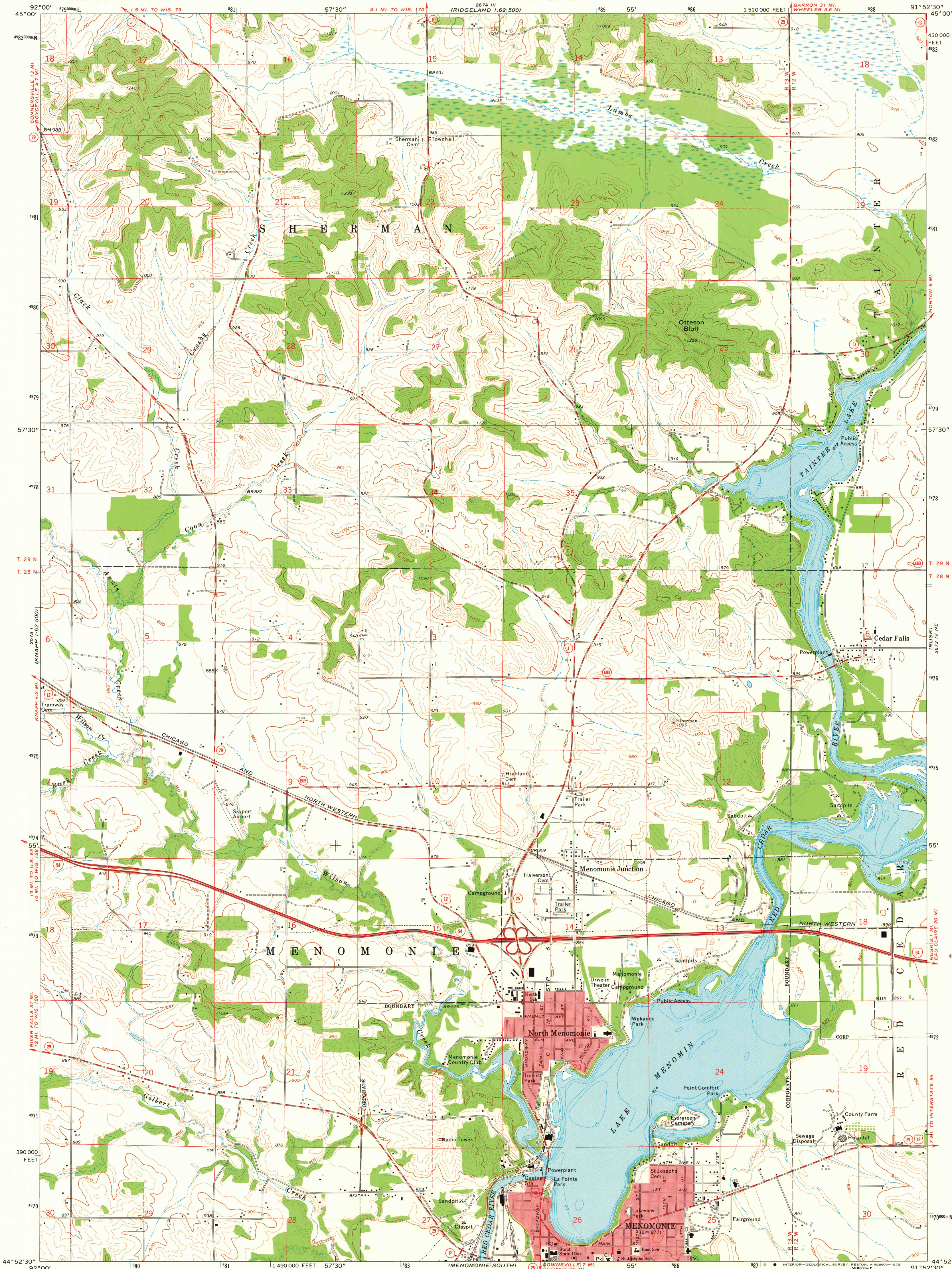


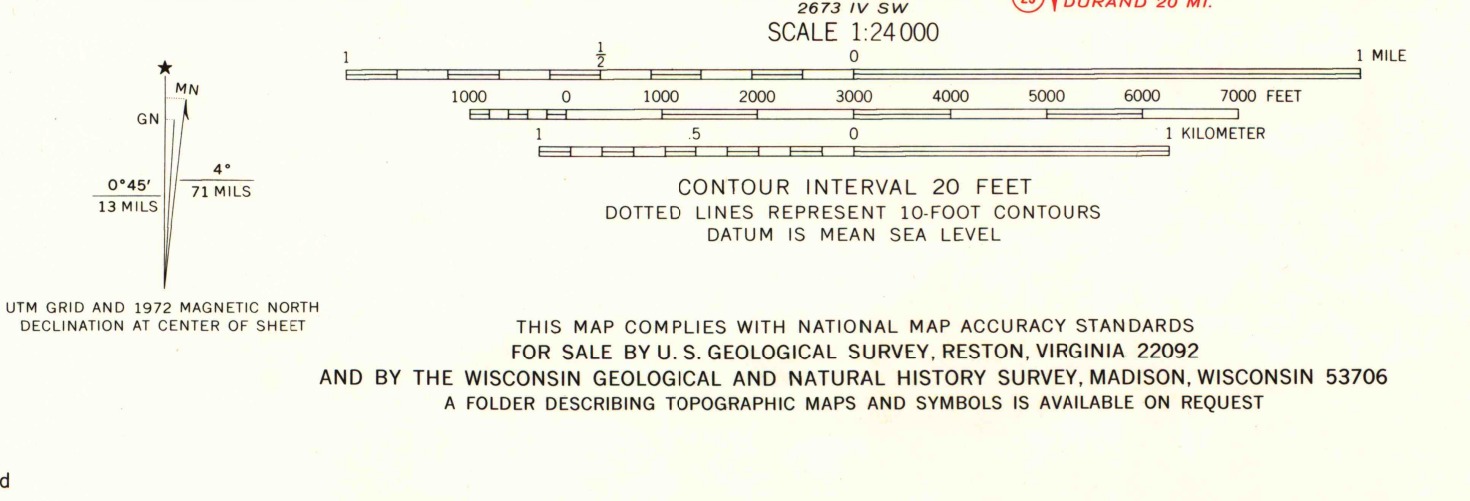
UNITED STATES
DEPARTMENT OF THE INTERIOR
GEOLOGICAL SURVEY

STATE OF WISCONSIN
STATE HIGHWAY COMMISSION
GEOLOGICAL AND NATURAL HISTORY SURVEY

MENOMONIE NORTH QUADRANGLE
WISCONSIN—DUNN CO.
7.5 MINUTE SERIES (TOPOGRAPHIC)



Mapped, edited, and published by the Geological Survey in cooperation with the Wisconsin Highway Commission and Wisconsin Geological and Natural History Survey. Control by USGS and USC&GS. Topography by photogrammetric methods from aerial photographs taken 1972. Field checked 1972. Hydrography compiled from information furnished by Wisconsin Department of Natural Resources. Projection and 10,000-foot grid ticks: Wisconsin coordinate system, central zone (Lambert conformal conic). 1000-meter Universal Transverse Mercator grid ticks, zone 15, shown in blue. 1927 North American datum. Red tint indicates areas in which only landmark buildings are shown. Fine red dashed lines indicate selected fence and field lines where generally visible on aerial photographs. This information is unchecked.



ROAD CLASSIFICATION
Primary highway, hard surface
Secondary highway, hard surface
Unimproved road
Light-duty road, hard or improved surface
Interstate Route
U. S. Route
State Route

MENOMONIE NORTH, WIS.
NW/4 MENOMONIE 15' QUADRANGLE
N4452.5—W9152.5/7.5
1972
AMS 2673 IV NW—SERIES V861

MAP AND AIR PHOTO
LIBRARY
APR 1 - 1975
University of Wisconsin

1972
COPY
1-1