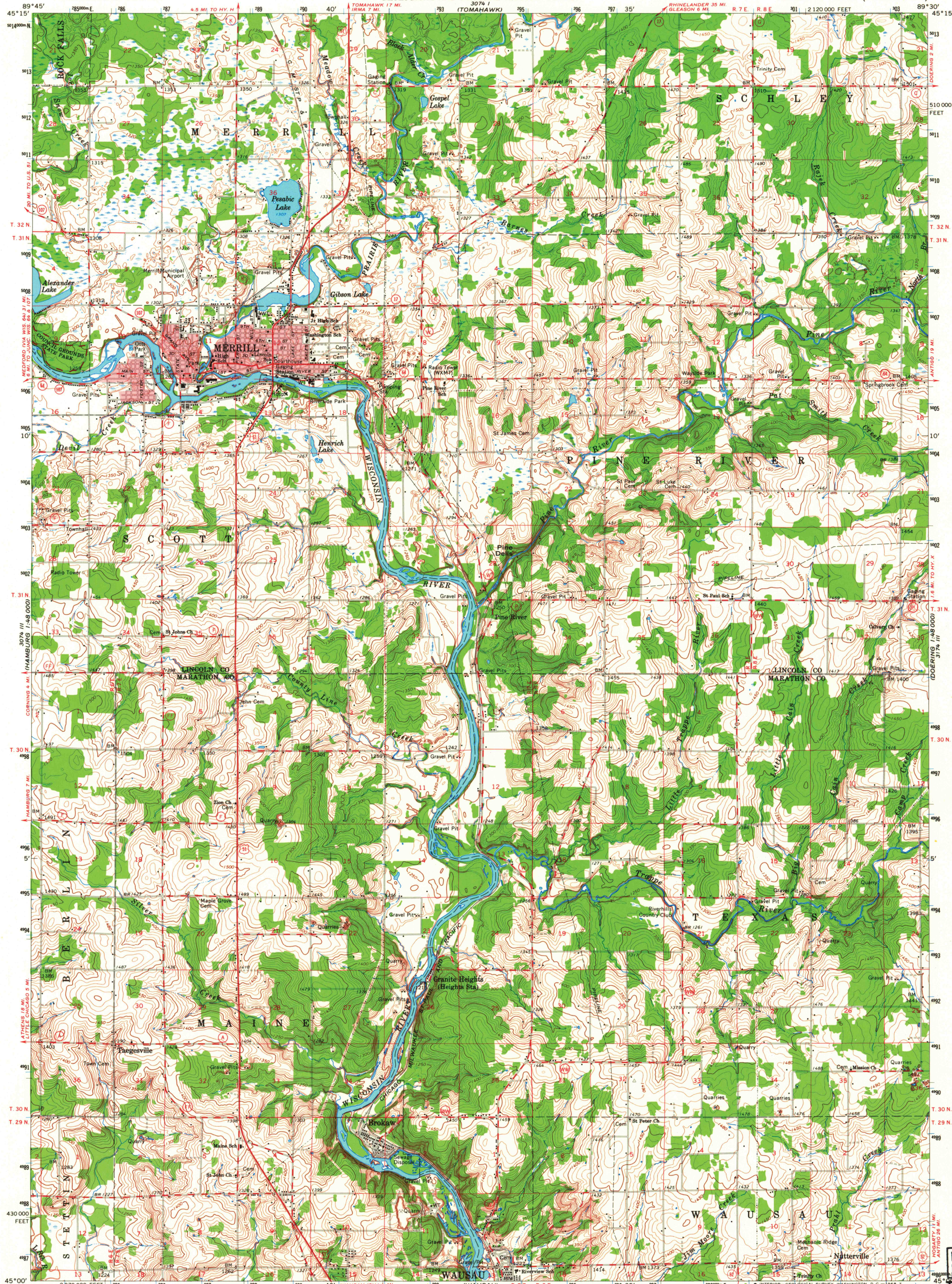


UNITED STATES
DEPARTMENT OF THE INTERIOR
GEOLOGICAL SURVEY

STATE OF WISCONSIN
STATE HIGHWAY COMMISSION
GEOLOGICAL AND NATURAL HISTORY SURVEY

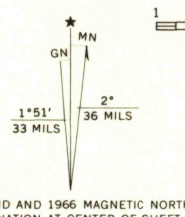
MERRILL QUADRANGLE
WISCONSIN
15 MINUTE SERIES (TOPOGRAPHIC)



Maped, edited, and published by the Geological Survey
in cooperation with the Wisconsin Highway Commission
and Wisconsin Geological and Natural History Survey
Control by USGS and USC&GS

Topography by photogrammetric methods from aerial
photographs taken 1964. Field checked 1966
Supersedes planimetric map dated 1951

Polyconic projection. 1927 North American datum
10,000-foot grid based on Wisconsin coordinate system,
central zone
1000-meter Universal Transverse Mercator grid ticks,
zone 16, shown in blue
Red tint indicates areas in which only landmark buildings are shown



SCALE 1:62,500

CONTOUR INTERVAL 10 FEET
DATUM IS MEAN SEA LEVEL

THIS MAP COMPLEYS WITH NATIONAL MAP ACCURACY STANDARDS
FOR SALE BY U.S. GEOLOGICAL SURVEY, WASHINGTON, D.C. 20242
AND BY THE WISCONSIN GEOLOGICAL AND NATURAL HISTORY SURVEY, MADISON, WISCONSIN 53706
A FOLDER DESCRIBING TOPOGRAPHIC MAPS AND SYMBOLS IS AVAILABLE ON REQUEST

ROAD CLASSIFICATION
Heavy-duty ——— Light-duty ———
Medium-duty ——— Unimproved dirt ———
U.S. Route ——— State Route ———



MERRILL, WIS.
N4500-WB930/15
1966

AMS 3074-11-SERIES V761

U.S.G.S.
FILE COPY
TOPOGRAPHIC DIVISION

3145
AUG 19 1968