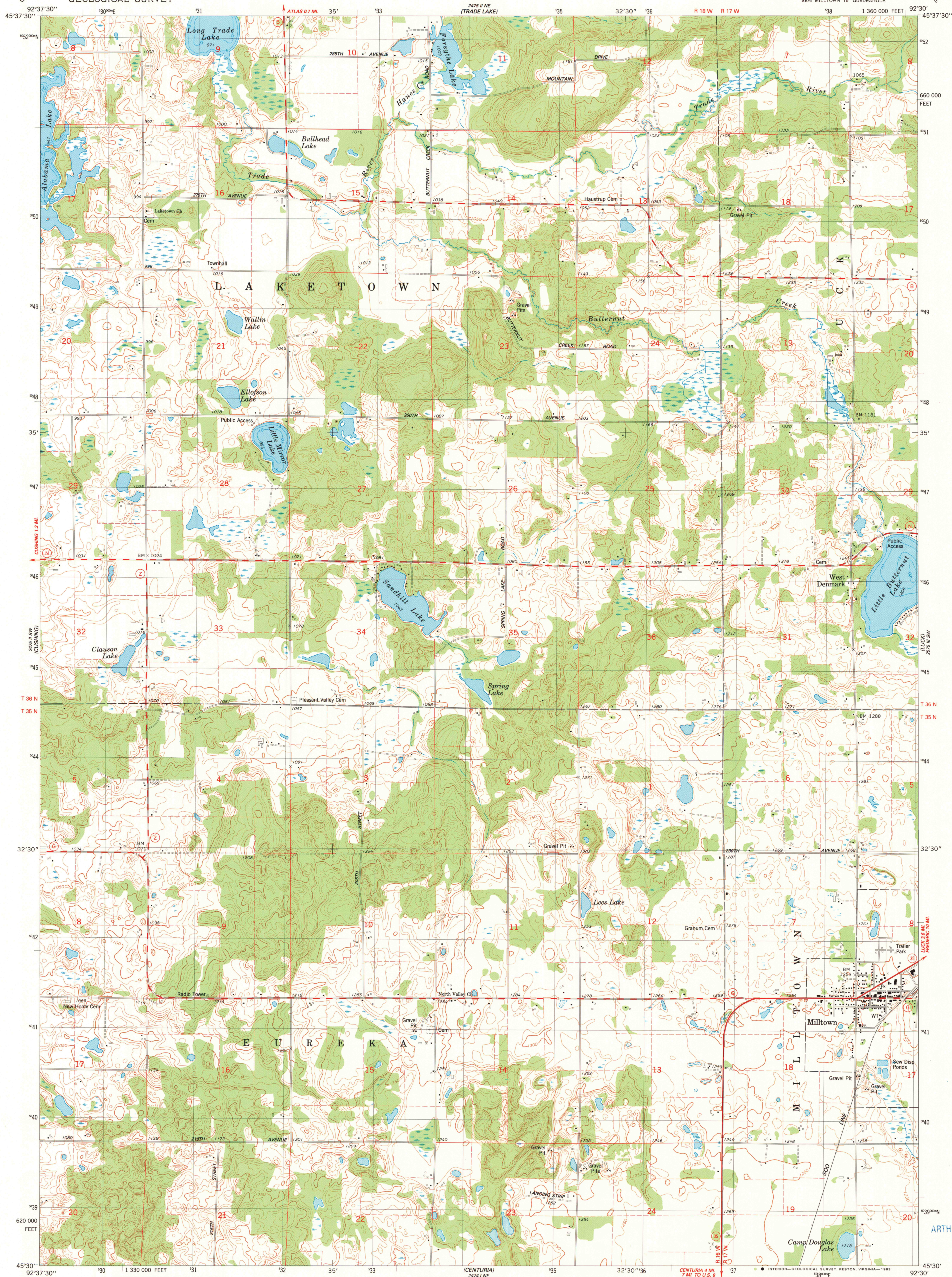


2475 II NW
(TRADE RIVER)

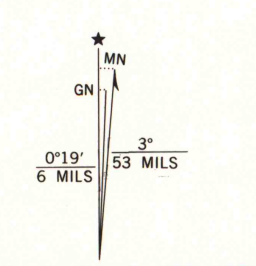
UNITED STATES
DEPARTMENT OF THE INTERIOR
GEOLOGICAL SURVEY

MILLTOWN QUADRANGLE
WISCONSIN-POLK CO.
7.5 MINUTE SERIES (TOPOGRAPHIC)
SE 4 MILLTOWN 15' QUADRANGLE

2475 III NW
(FREDERICK)



Mapped, edited, and published by the Geological Survey
Control by USGS and NOS/NOAA
Topography by photogrammetric methods from aerial photographs
taken 1979. Field checked 1979. Map edited 1983
Hydrography compiled from information furnished by
Wisconsin Department of Natural Resources
Projection and 10,000-foot grid ticks: Wisconsin coordinate
system, central zone (Lambert conformal conic)
1000-meter Universal Transverse Mercator grid, zone 15
1927 North American Datum
To place on the predicted North American Datum 1983
move the projection lines 8 meters north and
15 meters east as shown by dashed corner ticks
Fine red dashed lines indicate selected fence and field lines
where generally visible on aerial photographs
This information is unchecked



SCALE 1:24 000
1 000 0 1000 2000 3000 4000 5000 6000 7000 FEET
1 0 1 2 3 4 5 6 7 8 9 10 KILOMETER
CONTOUR INTERVAL 10 FEET
NATIONAL GEODETIC VERTICAL DATUM OF 1929



ROAD CLASSIFICATION
Primary highway, hard surface
Secondary highway, hard surface
Unimproved road
Light-duty road, hard or improved surface
Interstate Route
U.S. Route
State Route

MILLTOWN, WIS.
SE 4 MILLTOWN 15' QUADRANGLE
N4530-W9230/7.5
1983
DMA 2475 II SE-SERIES V861

ARTHUR H. ROBINSON MAP LIBRARY
University of Wisconsin-Madison
JUN 15 1984

1983
COPY
1-1
X