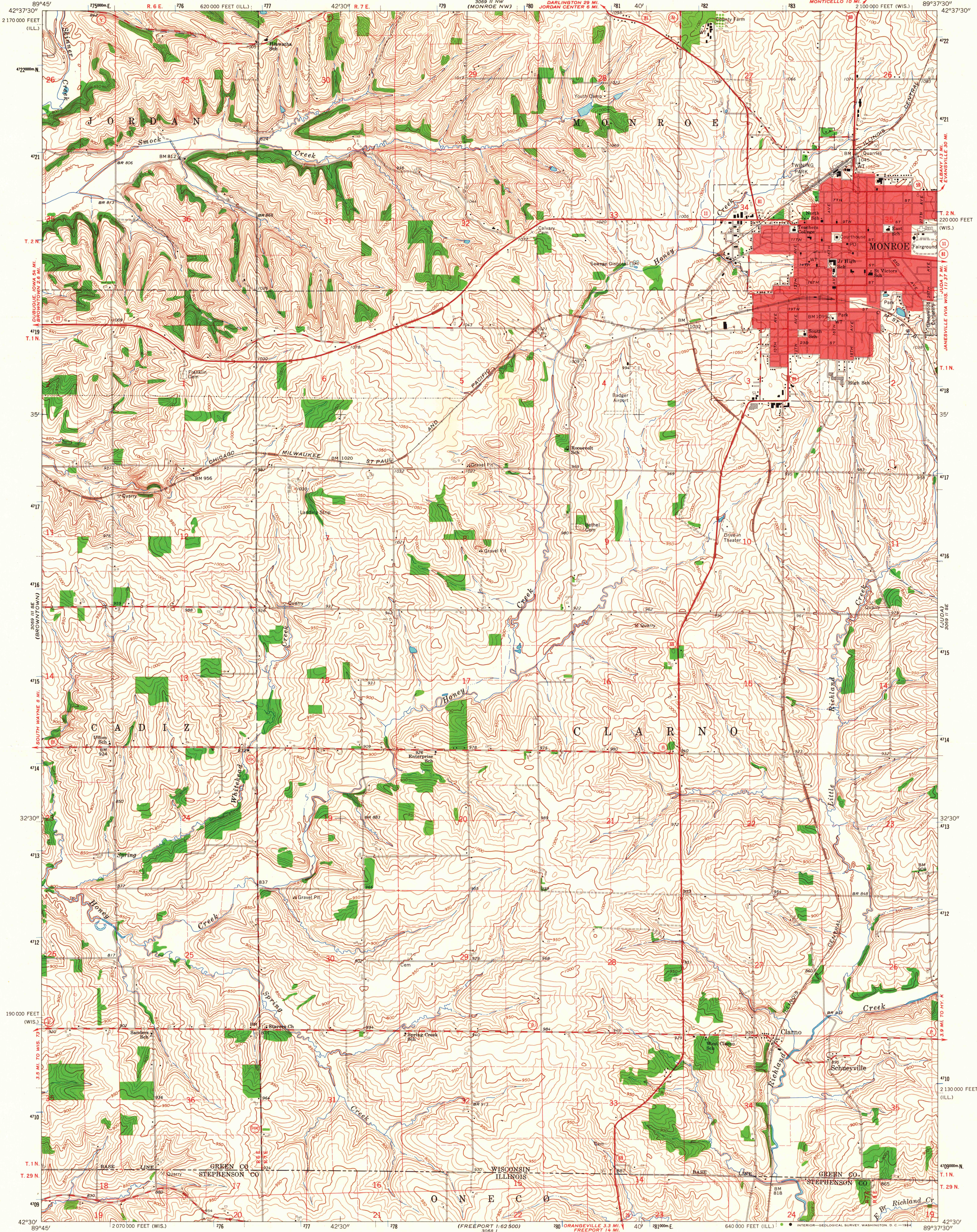
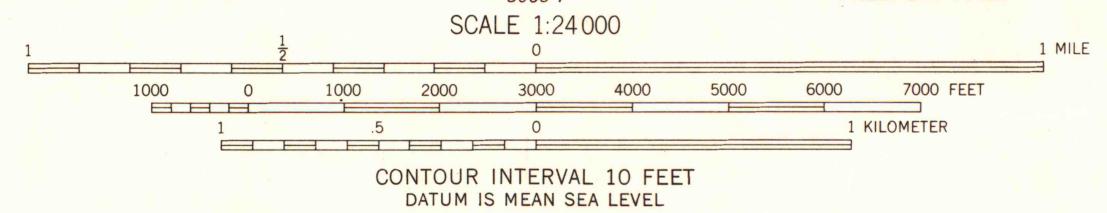


UNITED STATES
DEPARTMENT OF THE INTERIOR
GEOLOGICAL SURVEY

MONROE QUADRANGLE
WISCONSIN-ILLINOIS
7.5 MINUTE SERIES (TOPOGRAPHIC)
SW 1/4 MONROE 15' QUADRANGLE
MONTICELLO 10 MI.
210000 FEET (WIS.)



Mapped, edited, and published by the Geological Survey
in cooperation with State of Wisconsin agencies
Control by USGS and USC&GS
Topography by photogrammetric methods from aerial
photographs taken 1961. Field checked 1962
Polyconic projection. 1927 North American datum
10,000-foot grids based on Wisconsin coordinate system, south zone
and Illinois coordinate system, west zone
1000-meter Universal Transverse Mercator grid ticks,
zone 16, shown in blue
Red tint indicates area in which only landmark buildings are shown
Fine red dashed lines indicate selected fence and field lines where
generally visible on aerial photographs. This information is unchecked



ROAD CLASSIFICATION
Heavy-duty ——— Light-duty ———
Medium-duty ——— Unimproved dirt ———
○ State Route



THIS MAP COMPLIES WITH NATIONAL MAP ACCURACY STANDARDS
FOR SALE BY U. S. GEOLOGICAL SURVEY, WASHINGTON 25, D. C.,
AND BY THE STATE GEOLOGICAL SURVEY, MADISON 6, WISCONSIN,
AND BY THE STATE GEOLOGICAL SURVEY, URBANA, ILLINOIS
A FOLDER DESCRIBING TOPOGRAPHIC MAPS AND SYMBOLS IS AVAILABLE ON REQUEST

MONROE, WIS.-ILL.
SW 1/4 MONROE 15' QUADRANGLE
N4230—W8937.5/7.5
1962

AMS 3069 II SW—SERIES V861
LIBRARY USE ONLY

1962
Copy
1-1