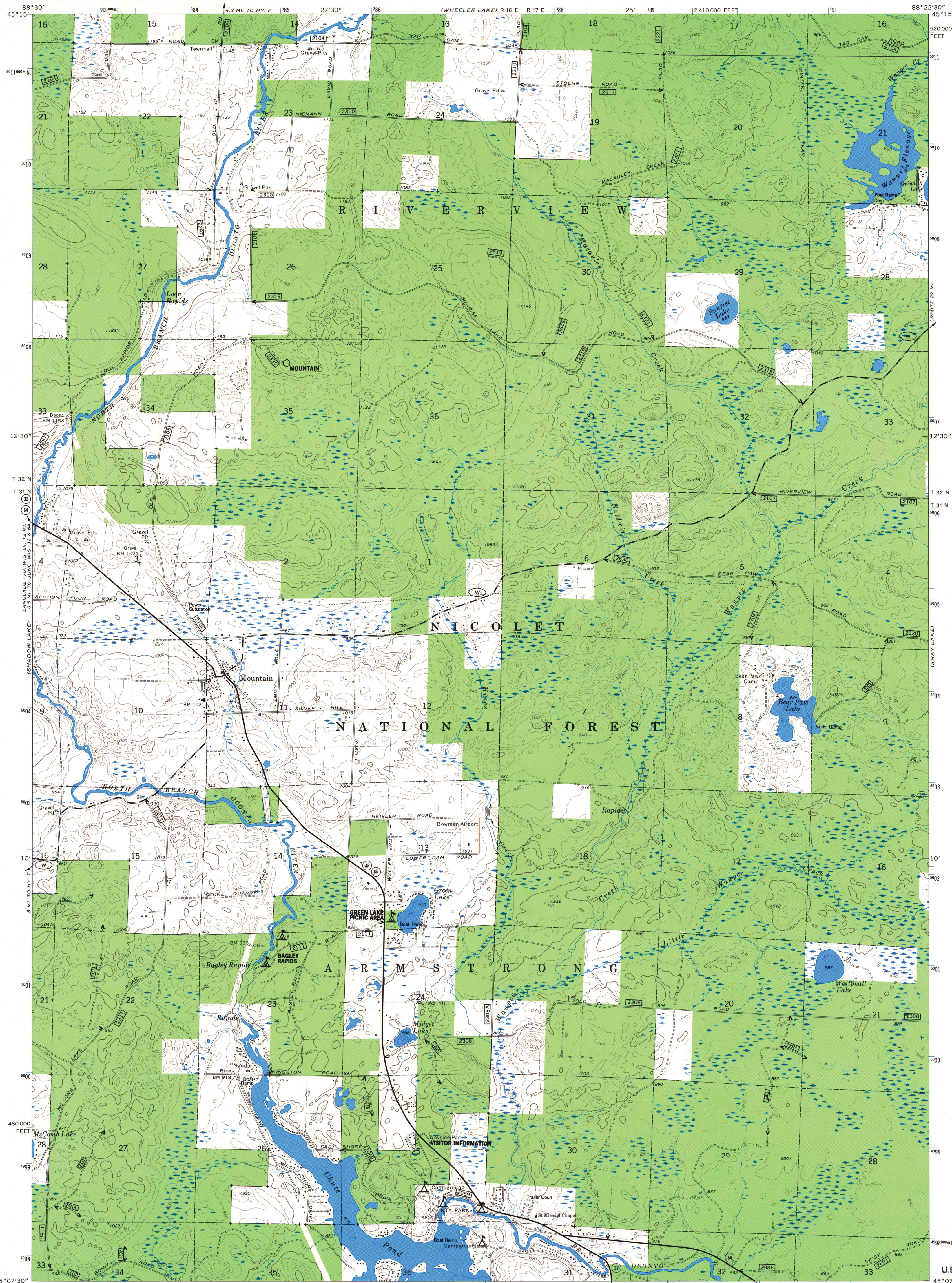


UNITED STATES
DEPARTMENT OF THE INTERIOR
GEOLOGICAL SURVEY
MODIFIED FOR USDA FOREST SERVICE USE

MOUNTAIN QUADRANGLE
WISCONSIN—OCONTO CO.
7.5 MINUTE SERIES



Base map prepared by the U.S. Geological Survey in cooperation with the Wisconsin Division of Highways and Wisconsin Geological and Natural History Survey

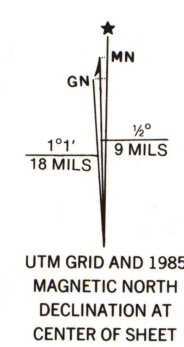
Control by USGS and NOS/NOAA

Topography by photogrammetric methods from aerial photographs taken 1972. Field checked 1973

Hydrography compiled from information furnished by Wisconsin Department of Natural Resources

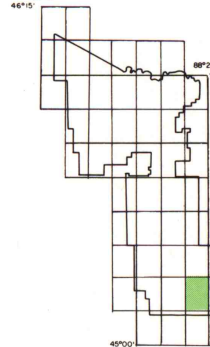
Projection and 10,000-foot grid ticks: Wisconsin coordinate system, central zone (Lambert conformal conic)
1000-metre Universal Transverse Mercator grid ticks, zone 16, shown in blue. 1927 North American datum

Modification to USGS base map by the Geometrics Service Center from 1980 aerial photography and 1984 correction guides furnished by the Eastern Region.



- Legend
- National Forest Boundary
 - National Forest Land
 - TOWNSHIP AND SECTION LINE CLASSIFICATION
 - Surveyed, Location Reliable
 - Surveyed, Location Unreliable
 - Road, Location Approximate
 - Trail, Location Approximate
 - Heavy Duty Road
 - Medium Duty Road
 - Improved Road
 - Unimproved Road
 - Trail

- Legend
- U.S. Highway
 - State Highway
 - County Highway
 - Forest Road
 - Forest Trail



Copies of this map are available for purchase at:
Forest Supervisor's Headquarters
Federal Building
Rhinelander, Wisconsin 54501

MOUNTAIN QUADRANGLE
WISCONSIN

N4507.5-W8822.5/7.5

1973

U.S. Regional
Depository Copy
DO NOT DISCARD

NOV 09 2000

U.S. Depository Copy
DO NOT DISCARD

JUL 27 1986