

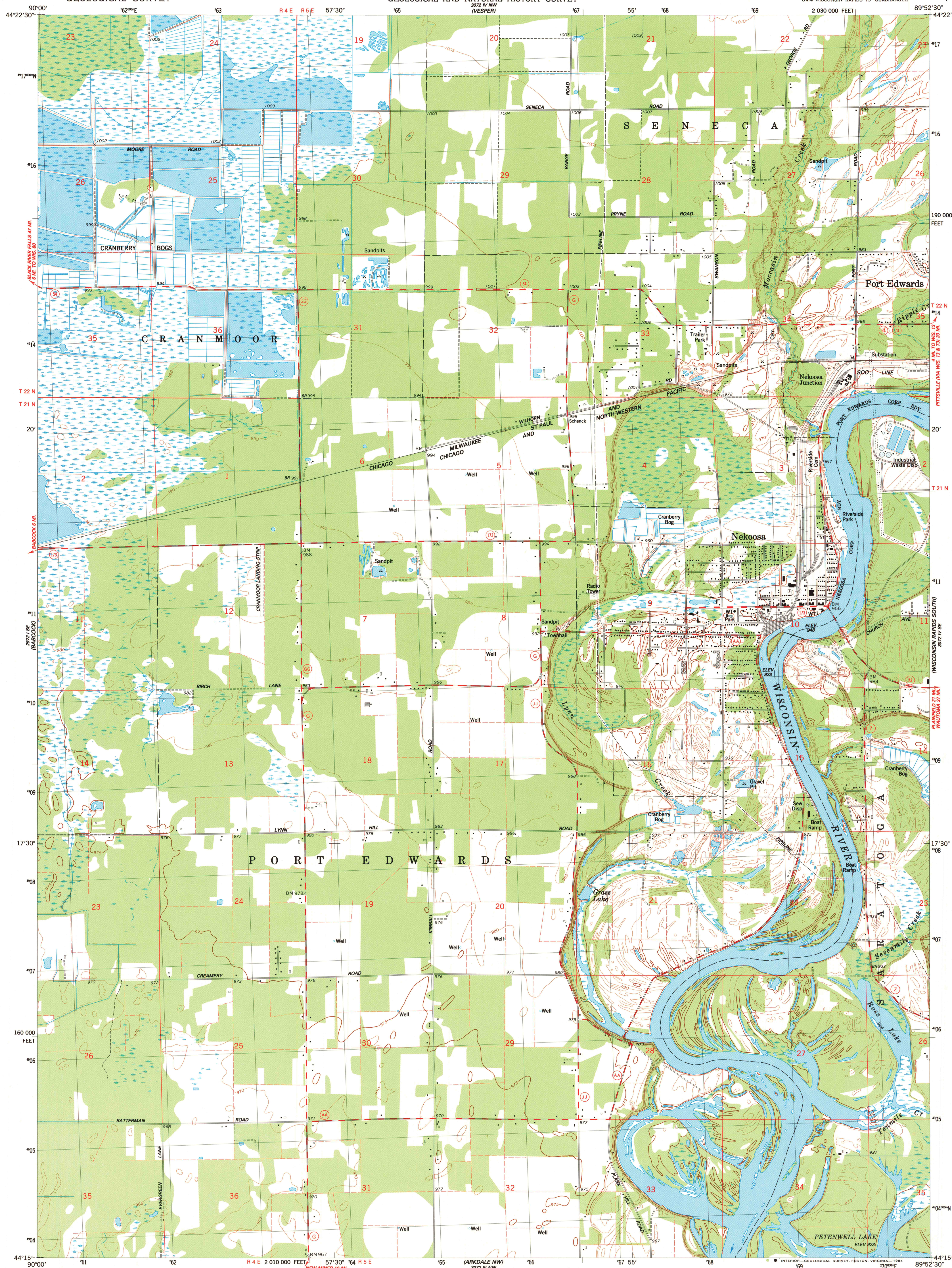
2021 E
(LAKES DEPT)

UNITED STATES
DEPARTMENT OF THE INTERIOR
GEOLOGICAL SURVEY

STATE OF WISCONSIN
DIVISION OF HIGHWAYS
GEOLOGICAL AND NATURAL HISTORY SURVEY

NEKOOSA QUADRANGLE
WISCONSIN-WOOD CO.
7.5 MINUTE SERIES (TOPOGRAPHIC)
SW/4 WISCONSIN RAPIDS 15' QUADRANGLE

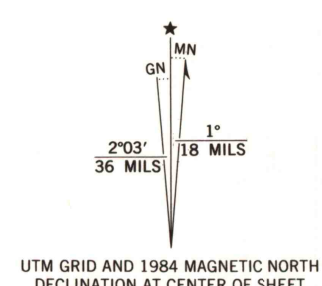
2021 N
(WISCONSIN RAPIDS)



2021 E
(LAKES DEPT)

Mapped, edited, and published by the Geological Survey
in cooperation with the Wisconsin Division of Highways
and Wisconsin Geological and Natural History Survey
Control by USGS and NOS/NOAA

Topography by photogrammetric methods from aerial photographs
taken 1966 and planimetric surveys 1967. Revised from aerial
photographs taken 1982. Field checked 1983. Map edited 1984
Projection and 10,000-foot grid ticks: Wisconsin coordinate
system, central zone (Lambert conformal conic)
1000-meter Universal Transverse Mercator grid, zone 16
1927 North American Datum
To place on the predicted North American Datum 1983,
move the projection lines 5 meters north and
11 meters east as shown by dashed corner ticks
Fine red dashed lines indicate selected fence and field lines where
generally visible on aerial photographs. This information is unchecked



SCALE 1:24 000
1 000 2 000 3 000 4 000 5 000 6 000 7 000 FEET
1 2 3 4 5 6 7 8 9 10 KILOMETER
CONTOUR INTERVAL 5 FEET
NATIONAL GEODETIC VERTICAL DATUM OF 1929

THIS MAP COMPLIES WITH NATIONAL MAP ACCURACY STANDARDS
FOR SALE BY U.S. GEOLOGICAL SURVEY, DENVER, COLORADO 80225, OR RESTON, VIRGINIA 22092
AND WISCONSIN GEOLOGICAL AND NATURAL HISTORY SURVEY, MADISON, WISCONSIN 53706
A FOLDER DESCRIBING TOPOGRAPHIC MAPS AND SYMBOLS IS AVAILABLE ON REQUEST



ROAD CLASSIFICATION
Primary highway, hard surface
Secondary highway, hard surface
Unimproved road
Interstate Route
U.S. Route
State Route

NEKOOSA, WIS.
SW/4 WISCONSIN RAPIDS 15' QUADRANGLE
44089-C8-TF-024

1984

DMA 3072 IV SW-SERIES V861

RETURN TO:
USGS AND HISTORICAL MAP ARCHIVES