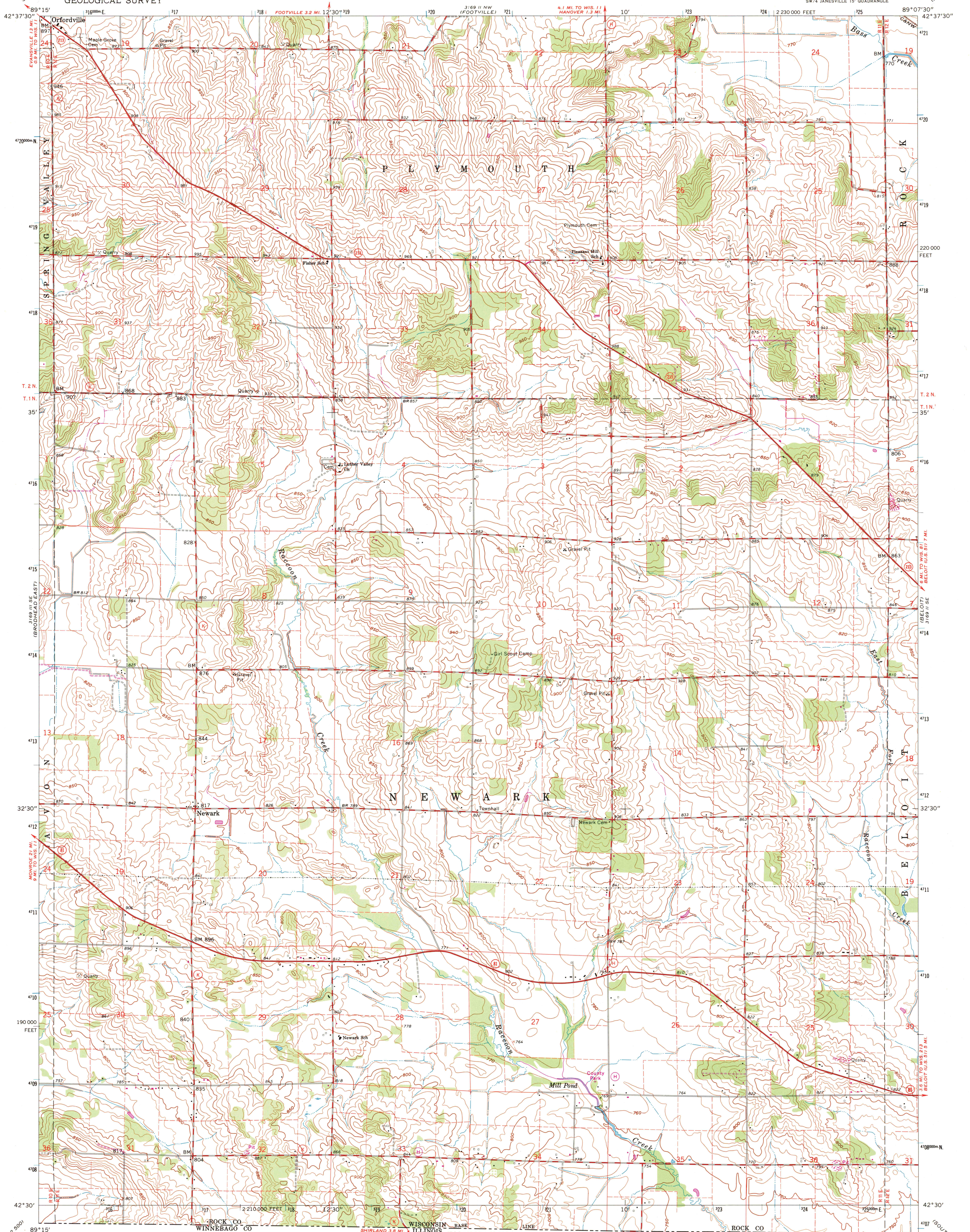


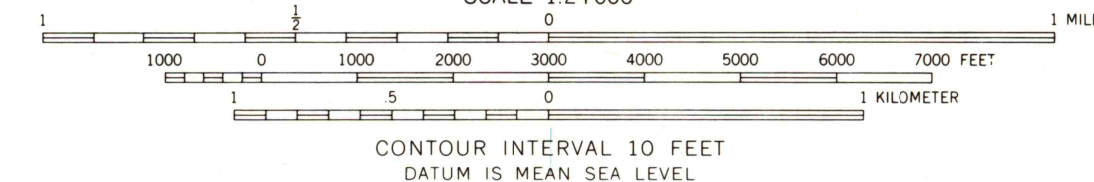
UNITED STATES  
DEPARTMENT OF THE INTERIOR  
GEOLOGICAL SURVEY

NEWARK QUADRANGLE  
WISCONSIN-ROCK CO.  
7.5 MINUTE SERIES (TOPOGRAPHIC)



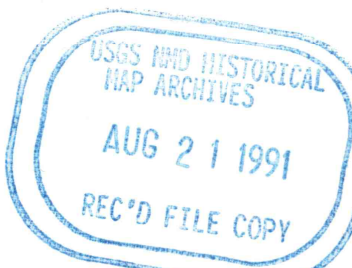
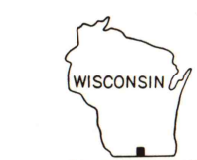
Mapped, edited, and published by the Geological Survey in cooperation with State of Wisconsin agencies  
Control by USGS and USC&GS  
Topography by photogrammetric methods from aerial photographs taken 1960. Field checked 1962  
Polyconic projection. 1927 North American datum  
10,000-foot grid based on Wisconsin coordinate system, south zone  
1000-meter Universal Transverse Mercator grid ticks, zone 16, shown in blue  
Fine red dashed lines indicate selected fence and field lines where generally visible on aerial photographs. This information is unchecked  
Revisions shown in purple compiled from aerial photographs taken 1971. This information not field checked  
Map photoinspected 1981  
No major culture or drainage changes observed

UTM GRID AND 1971 MAGNETIC NORTH DECLINATION AT CENTER OF SHEET



THIS MAP COMPLIES WITH NATIONAL MAP ACCURACY STANDARDS  
FOR SALE BY U. S. GEOLOGICAL SURVEY, DENVER, COLORADO 80225, OR RESTON, VIRGINIA 22092  
AND WISCONSIN GEOLOGICAL AND NATURAL HISTORY SURVEY, MADISON, WISCONSIN 53706  
A FOLDER DESCRIBING TOPOGRAPHIC MAPS AND SYMBOLS IS AVAILABLE ON REQUEST

ROAD CLASSIFICATION  
Heavy-duty ——— Light-duty ———  
Medium-duty ——— Unimproved dirt ———  
State Route ○



NEWARK, WIS.  
SW 1/4 JANEVILLE 15' QUADRANGLE  
N4230-W8907.5/7.5  
PHOTOINSPECTED 1981  
1962  
PHOTOREVISED 1971  
AMS 3169 II SW-SERIES V861