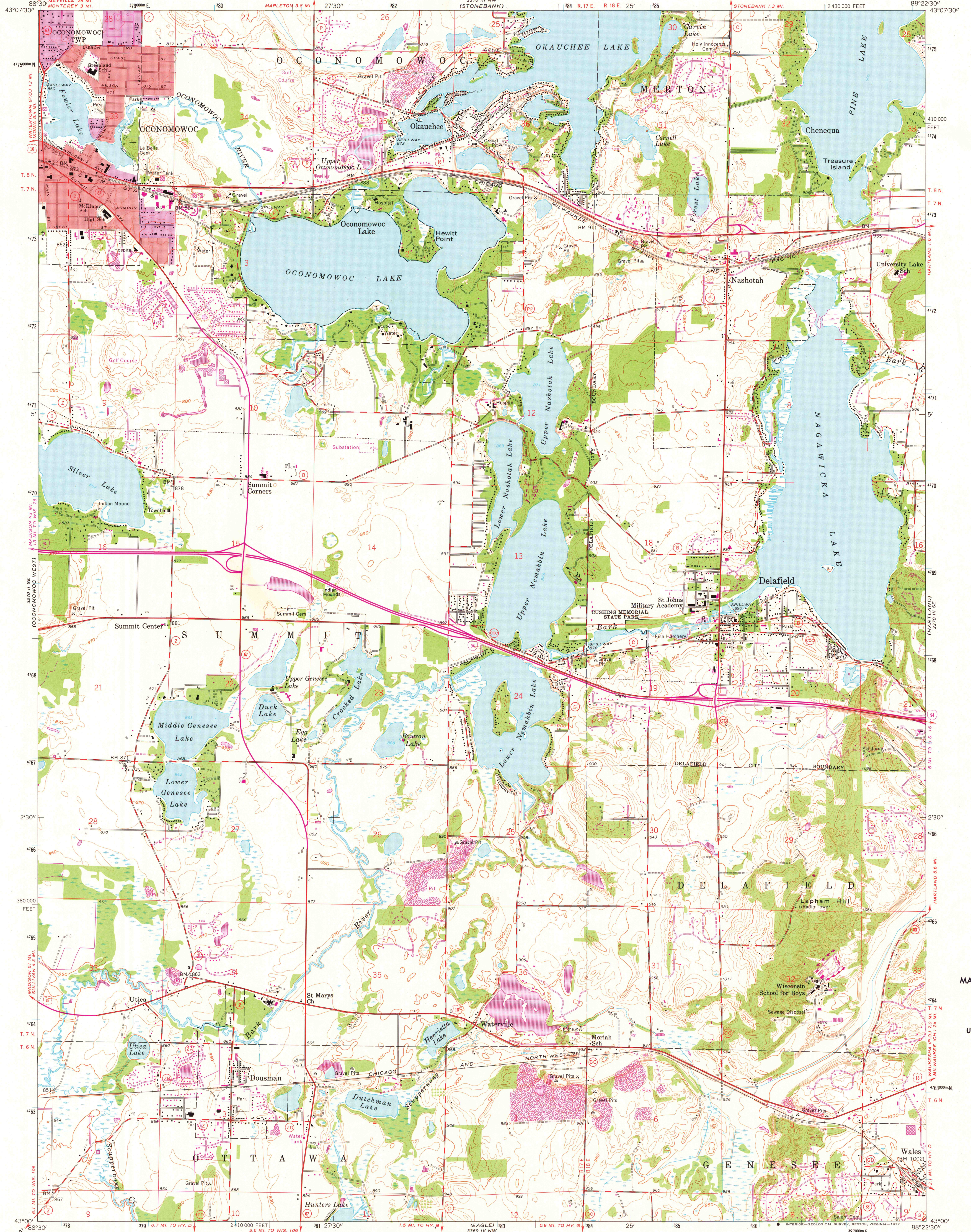
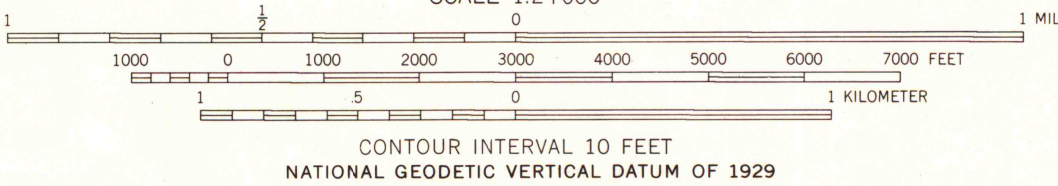
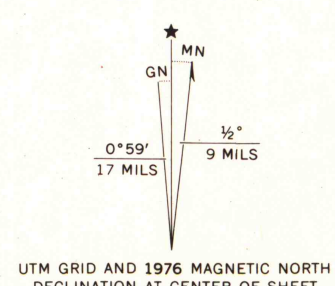


UNITED STATES
DEPARTMENT OF THE INTERIOR
GEOLOGICAL SURVEY

OCONOMOWOC EAST QUADRANGLE
WISCONSIN—WAUKESHA CO.
7.5 MINUTE SERIES (TOPOGRAPHIC)
SW 1/4 HARTLAND 15' QUADRANGLE



Mapped, edited, and published by the Geological Survey
Control by USGS and USC&GS
Topography from aerial photographs by photogrammetric methods
Aerial photographs taken 1954-1955. Field check 1959
Polyconic projection. 1927 North American datum
10,000-foot grid based on Wisconsin coordinate system, south zone
1000-meter Universal Transverse Mercator grid ticks,
zone 16, shown in blue
Red tint indicates areas in which only
landmark buildings are shown
Revisions shown in purple compiled from aerial photographs
taken 1971 and 1976. This information not field checked
Purple tint indicates extension of urban areas



THIS MAP COMPLIES WITH NATIONAL MAP ACCURACY STANDARDS
FOR SALE BY U. S. GEOLOGICAL SURVEY, RESTON, VIRGINIA 22092
AND WISCONSIN GEOLOGICAL AND NATURAL HISTORY SURVEY, MADISON, WISCONSIN 53706
A FOLDER DESCRIBING TOPOGRAPHIC MAPS AND SYMBOLS IS AVAILABLE ON REQUEST



ROAD CLASSIFICATION
Heavy-duty ——— Light-duty ———
Medium-duty ——— Unimproved dirt ———
U. S. Route ——— State Route ———
Interstate Route ———

OCONOMOWOC EAST, WIS.
SW 1/4 HARTLAND 15' QUADRANGLE
N 4300—W 8822.5/7.5

1959
PHOTOREVISED 1971 AND 1976
AMS 3370 III SW—SERIES V861

MAP AND AIR PHOTO
LIBRARY
AUG 10 1978
University of Wisconsin
Madison

1976
copy
1-1