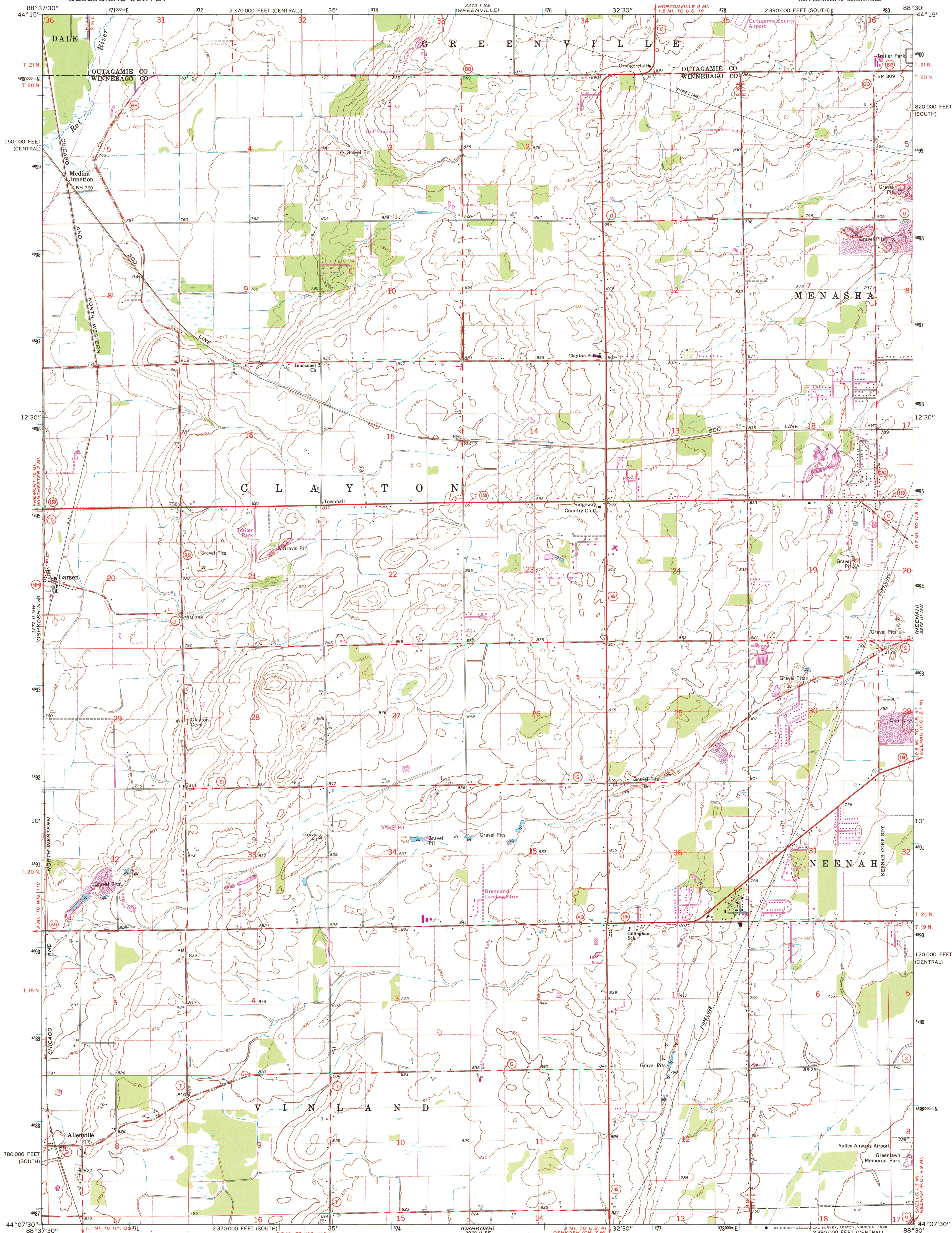


UNITED STATES
DEPARTMENT OF THE INTERIOR
GEOLOGICAL SURVEY

OSHKOSH NE QUADRANGLE
WISCONSIN
7.5 MINUTE SERIES (TOPOGRAPHIC)
NE/4 OSHKOSH 15' QUADRANGLE



Mapped, edited, and published by the Geological Survey
in cooperation with the Wisconsin Highway Commission
and Wisconsin Geological and Natural History Survey
Control by USGS and USC&GS

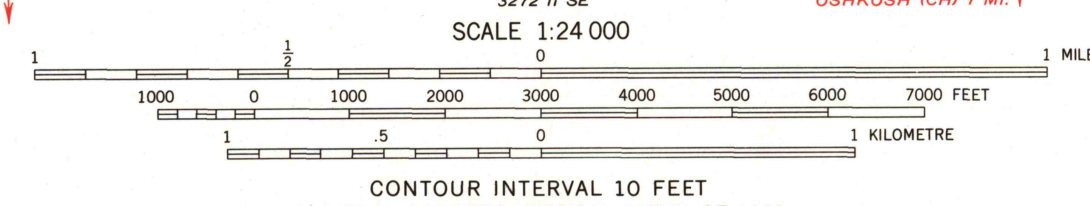
Topography by photogrammetric methods from aerial
photographs taken 1960. Field checked 1961

Polyconic projection, 1927 North American datum
10,000-foot grids based on Wisconsin coordinate system,
south and central zones

1000-metre Universal Transverse Mercator grid ticks,
zone 16, shown in blue

Fine red dashed lines indicate selected fence and field lines where
generally visible on aerial photographs. This information is unchecked

UTM GRID AND 1975 MAGNETIC NORTH
DECLINATION AT CENTER OF SHEET



THIS MAP COMPLIES WITH NATIONAL MAP ACCURACY STANDARDS
FOR SALE BY U.S. GEOLOGICAL SURVEY, RESTON, VIRGINIA 22092
AND BY THE WISCONSIN GEOLOGICAL AND NATURAL HISTORY SURVEY, MADISON, WISCONSIN 53706
A FOLDER DESCRIBING TOPOGRAPHIC MAPS AND SYMBOLS IS AVAILABLE ON REQUEST

To place on the predicted North American Datum 1983,
move the projection lines 5 meters north and
8 meters east as shown by dashed corner ticks
Revisions shown in purple compiled from aerial photographs
taken 1975. This information not field checked



ROAD CLASSIFICATION
Heavy-duty ——— Light-duty ———
Medium-duty ——— Unimproved dirt ———
U.S. Route ——— State Route ———

OSHKOSH NE, WIS.
NE/4 OSHKOSH 15' QUADRANGLE
44088-B5-TF-024
1961
PHOTOREVISED 1975
DMA 3272 II NE—SERIES V861

USGS NHD HISTORICAL MAP
JUL 24 1966
REC'D FILE COPY