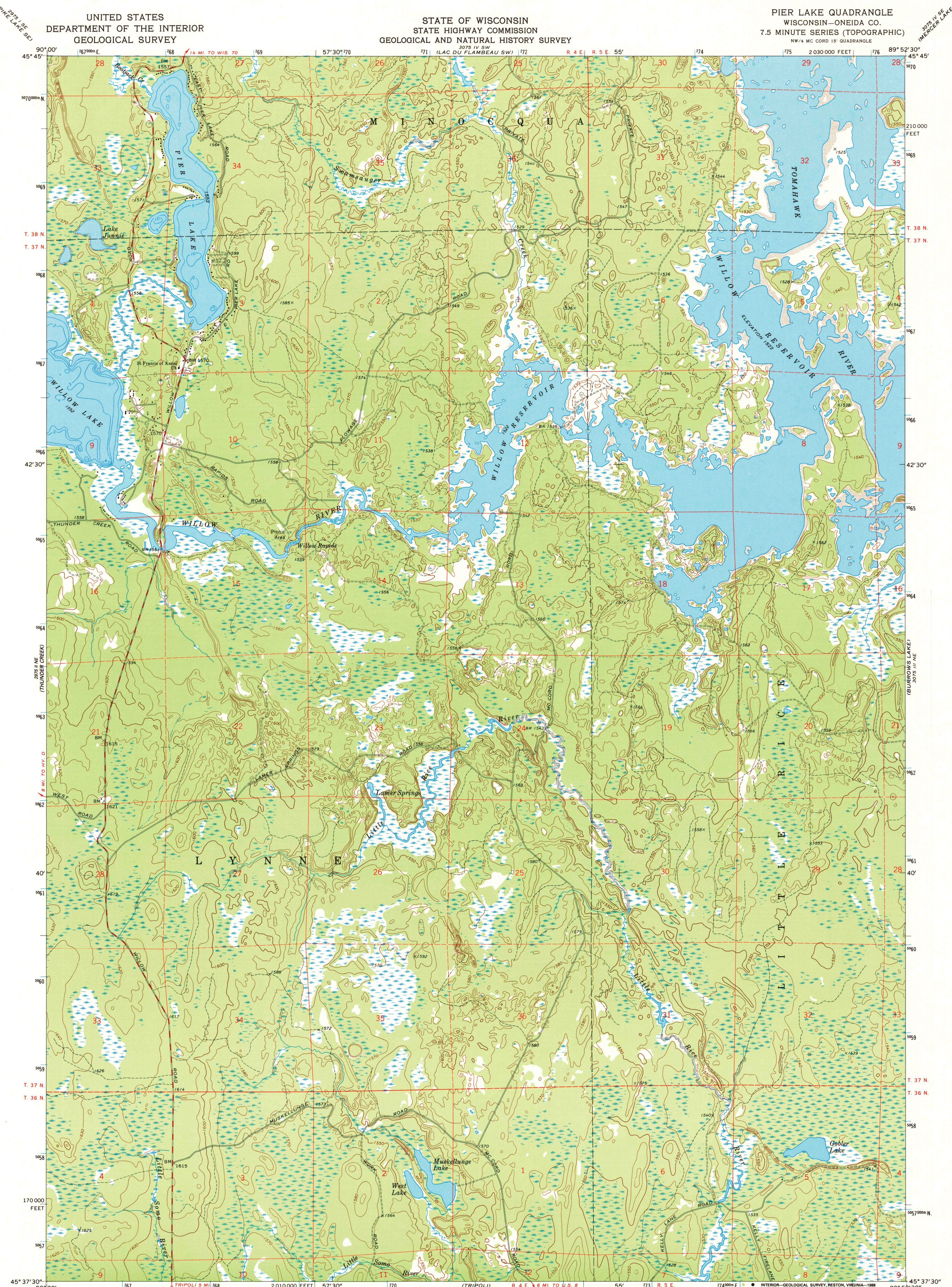


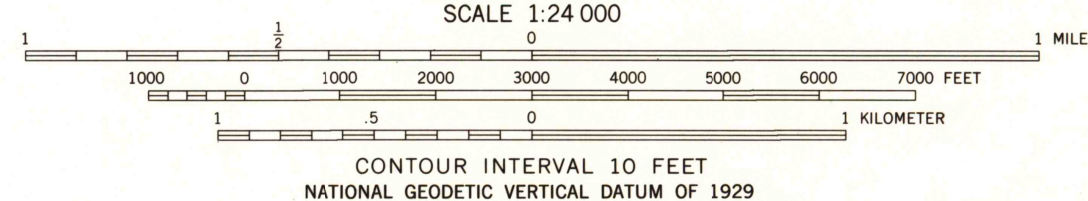
UNITED STATES
DEPARTMENT OF THE INTERIOR
GEOLOGICAL SURVEY

STATE OF WISCONSIN
STATE HIGHWAY COMMISSION
GEOLOGICAL AND NATURAL HISTORY SURVEY

PIER LAKE QUADRANGLE
WISCONSIN—ONEIDA CO.
7.5 MINUTE SERIES (TOPOGRAPHIC)



Mapped, edited, and published by the Geological Survey in cooperation with the Wisconsin Highway Commission and Wisconsin Geological and Natural History Survey. Control by USGS and USC&GS. Topography by photogrammetric methods from aerial photographs taken 1969. Field checked 1971. Depth curves compiled from charts furnished by Wisconsin Department of Natural Resources. Polyconic projection. 1927 North American datum. 10,000-foot grid based on Wisconsin coordinate system, north zone. 1000-meter Universal Transverse Mercator grid ticks, zone 16, shown in blue. Map photoinspected 1981. No major culture or drainage changes observed.



ROAD CLASSIFICATION
Primary highway, hard surface
Secondary highway, hard surface
Light-duty road, hard or improved surface
Unimproved road
Interstate Route
U. S. Route
State Route



QUADRANGLE LOCATION
To place on the predicted North American Datum 1983, move the projection lines 6 meters north and 10 meters east as shown by dashed corner ticks.

PIER LAKE, WIS.
NW 1/4 MC CORD 15' QUADRANGLE
45089-F8-TF-024
1971
PHOTOINSPECTED 1981
DMA 3075 III NW—SERIES V861

USGS NHD HISTORICAL MAP
AUG 02 1988
REC'D FILE COPY