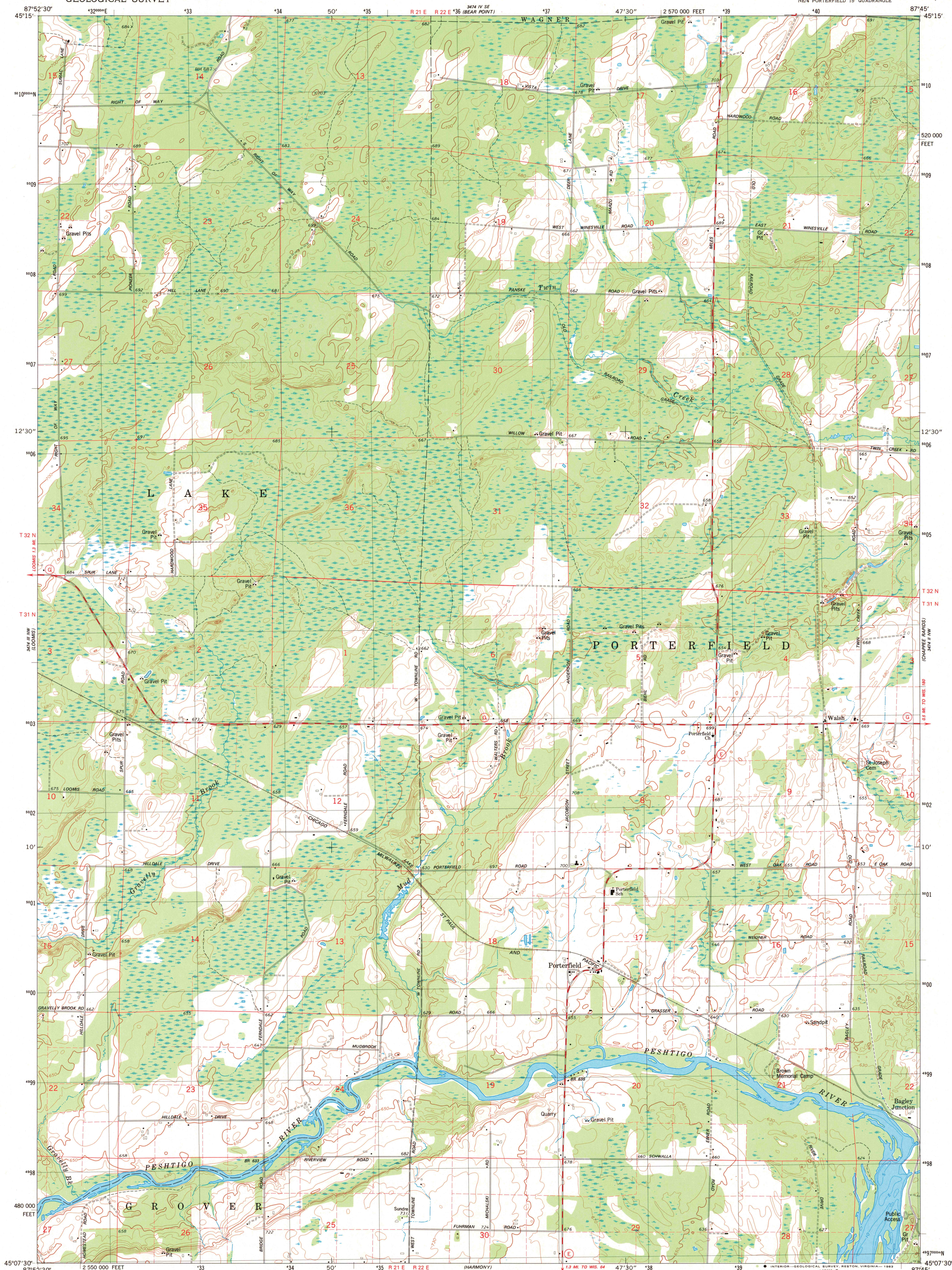


UNITED STATES
DEPARTMENT OF THE INTERIOR
GEOLOGICAL SURVEY

PORTERFIELD QUADRANGLE
WISCONSIN-MARINETTE CO.
7.5 MINUTE SERIES (TOPOGRAPHIC)
NE 1/4 PORTERFIELD 15' QUADRANGLE



Maped, edited, and published by the Geological Survey
in cooperation with the Wisconsin Division of Highways
and Wisconsin Geological and Natural History Survey

Control by USGS and NOS/NOAA

Topography by photogrammetric methods from aerial photographs
taken 1954. Revised from aerial photographs taken 1979
Field checked 1980. Map edited 1982

Hydrography compiled from information furnished by
Wisconsin Department of Natural Resources

Projection and 10,000-foot grid ticks: Wisconsin coordinate
system, central zone (Lambert conformal conic)

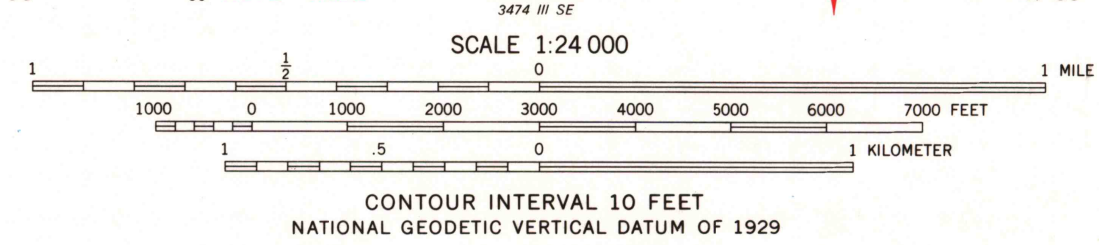
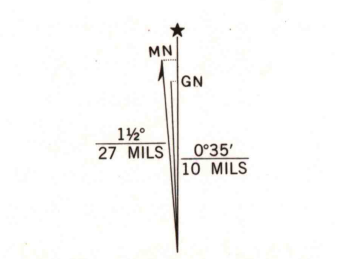
1000-meter Universal Transverse Mercator grid, zone 16

1927 North American Datum

To place on the predicted North American Datum 1983

move the projection lines 5 meters north and

7 meters east as shown by dashed corner ticks



THIS MAP COMPLIES WITH NATIONAL MAP ACCURACY STANDARDS
FOR SALE BY U. S. GEOLOGICAL SURVEY, RESTON, VIRGINIA 22092
AND WISCONSIN GEOLOGICAL AND NATURAL HISTORY SURVEY, MADISON, WISCONSIN 53706
A FOLDER DESCRIBING TOPOGRAPHIC MAPS AND SYMBOLS IS AVAILABLE ON REQUEST



ROAD CLASSIFICATION	
Primary highway, hard surface	Light-duty road, hard or improved surface
Secondary highway, hard surface	Unimproved road
Interstate Route	U. S. Route
	State Route

PORTERFIELD, WIS.
NE 1/4 PORTERFIELD 15' QUADRANGLE
N4507.5-W8745/7.5

1982

DMA 3474 III NE-SERIES V861

RETURN TO:
USGS AND HISTORICAL MAP ARCHIVES

SEP 1 1983