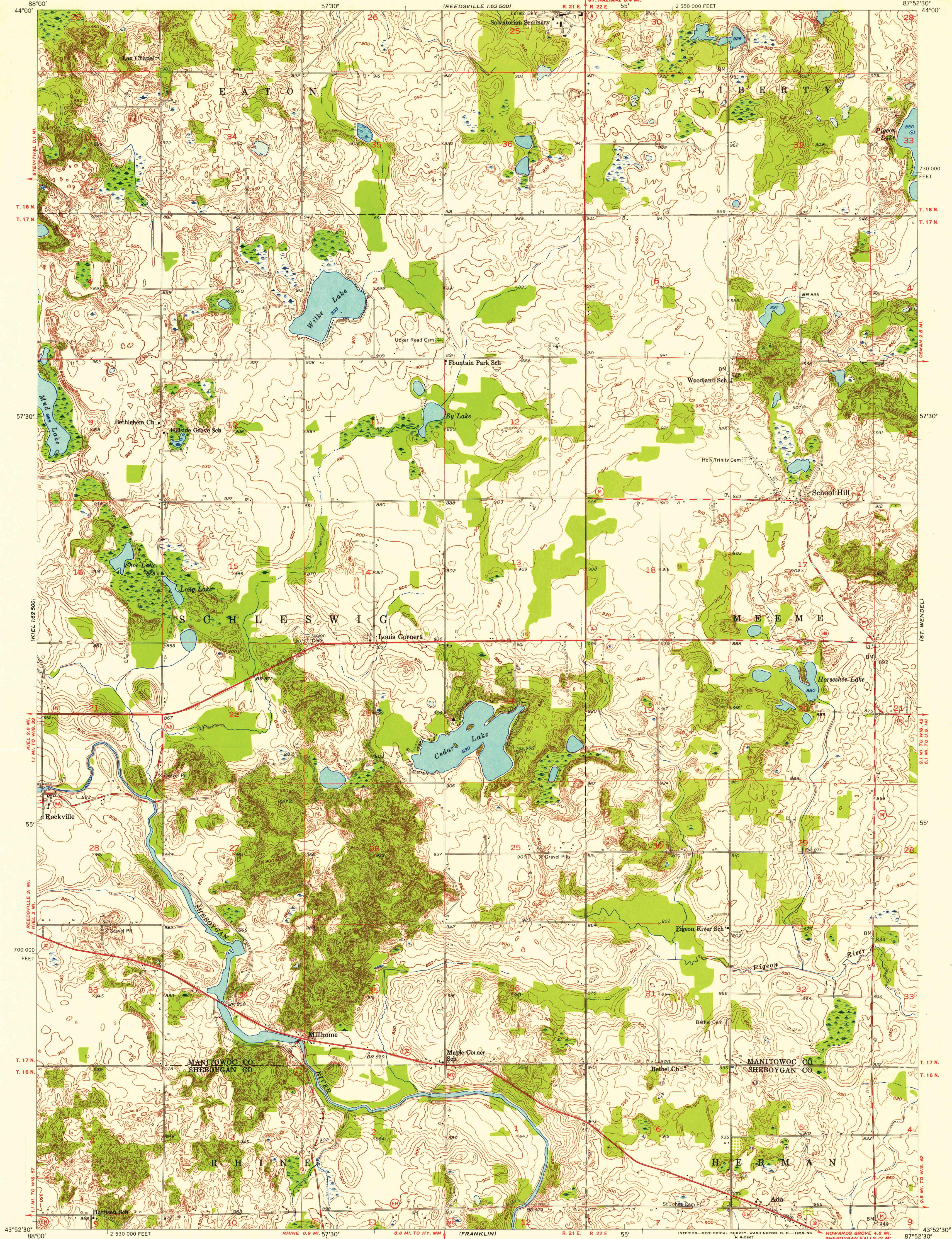


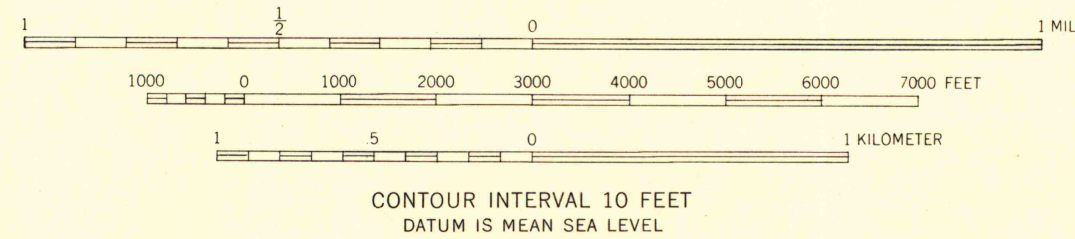
UNITED STATES
DEPARTMENT OF THE INTERIOR
GEOLOGICAL SURVEY

SCHOOL HILL QUADRANGLE
WISCONSIN
7.5 MINUTE SERIES (TOPOGRAPHIC)
NW 1/4 HOWARDS GROVE 15' QUADRANGLE



Mapped, edited, and published by the Geological Survey
Control by USGS and USC&GS
Topography from aerial photographs by Kelsh plotter
Aerial photographs taken 1951-1952. Field check 1954
Polyconic projection, 1927 North American datum
10,000-foot grid based on Wisconsin coordinate system,
south zone

TRUE NORTH
MAGNETIC NORTH
APPROXIMATE MEAN
DECLINATION, 1954



ROAD CLASSIFICATION
Heavy-duty ——— Light-duty ———
Medium-duty ——— Unimproved dirt ———
U.S. Route ——— State Route ———

SCHOOL HILL, WIS.
NW 1/4 HOWARDS GROVE 15' QUADRANGLE
N4352.5-W8752.5/7.5

UNIVERSITY OF WISCONSIN
Department of Geography

FOR LIBRARY USE
ONLY

1954
COPY
1-1