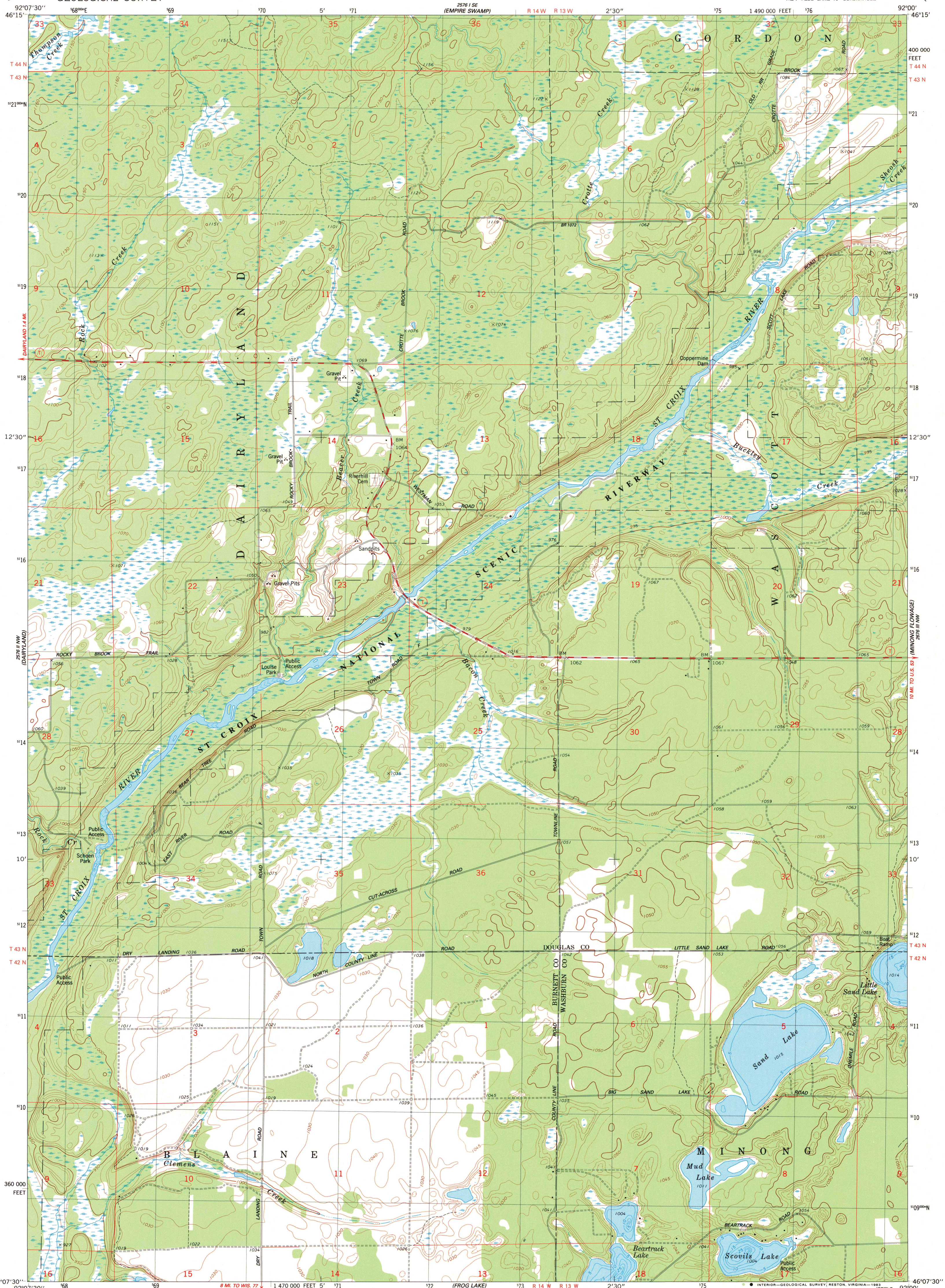


UNITED STATES  
DEPARTMENT OF THE INTERIOR  
GEOLOGICAL SURVEY

SCOVILS LAKE QUADRANGLE  
WISCONSIN  
7.5 MINUTE SERIES (TOPOGRAPHIC)  
NE 4 WEBB LAKE 15' QUADRANGLE



Mapped, edited, and published by the Geological Survey

Control by USGS and NOS/NOAA

Topography by photogrammetric methods from aerial photographs

taken 1979. Field checked 1979. Map edited 1983

Hydrography compiled from information furnished by

Wisconsin Department of Natural Resources

Projection and 10,000-foot grid ticks: Wisconsin coordinate

system, north zone (Lambert conformal conic)

1000-meter Universal Transverse Mercator grid, zone 15

1927 North American Datum

To place on the predicted North American Datum 1983

move the projection lines 8 meters north and

14 meters east as shown by dashed corner ticks

There may be private inholdings within the boundaries of

the National or State reservations shown on this map

Fine red dashed lines indicate selected fence and field lines

where generally visible on aerial photographs

This information is unchecked

SCALE 1:24 000

1 000 0 1000 2000 3000 4000 5000 6000 7000 FEET

1 0 1 2 3 4 5 6 7 8 9 10 KILOMETER

CONTOUR INTERVAL 10 FEET

DOTTED LINES REPRESENT 5-FOOT CONTOURS

NATIONAL GEODETIC VERTICAL DATUM OF 1929

THIS MAP COMPLIES WITH NATIONAL MAP ACCURACY STANDARDS

FOR SALE BY U. S. GEOLOGICAL SURVEY, RESTON, VIRGINIA 22092

AND WISCONSIN GEOLOGICAL AND NATURAL HISTORY SURVEY, MADISON, WISCONSIN 53706

A FOLDER DESCRIBING TOPOGRAPHIC MAPS AND SYMBOLS IS AVAILABLE ON REQUEST



QUADRANGLE LOCATION

JUN - 4 1984

ARTHUR H. ROBINSON MAP LIBRARY

University of Wisconsin-Madison

SCOVILS LAKE, WIS.

NE 4 WEBB LAKE 15' QUADRANGLE

N4607.5-W9200/7.5

1983

DMA 2576 II NE-SERIES V861

1983  
COPY  
1-18