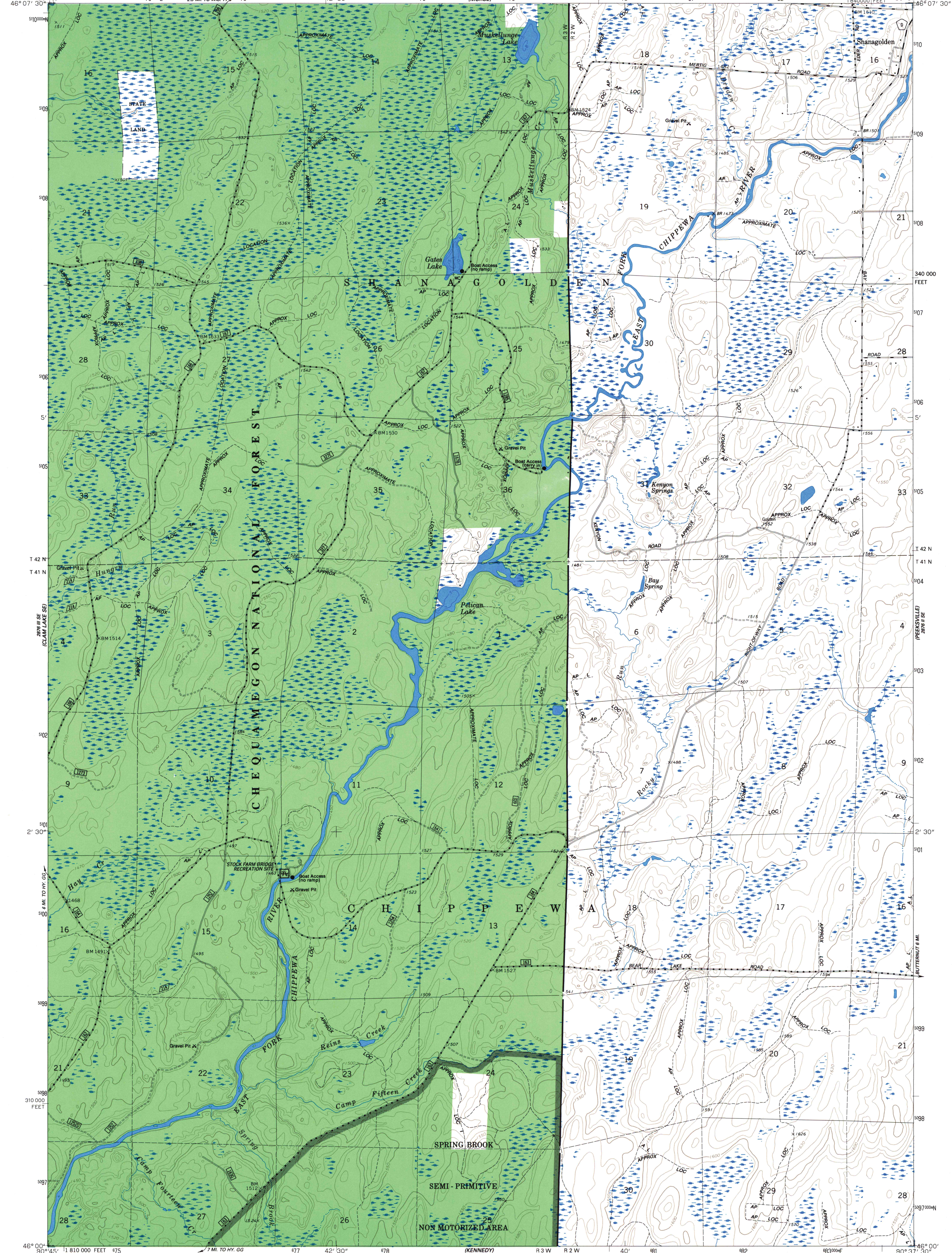


U.S. Depository Copy
Do Not Discard
JAN 05 1993



Base map prepared by the U.S. Geological Survey in cooperation with the Wisconsin Division of Highways and Wisconsin Geological and Natural History Survey Control by USGS and NOS/NOAA
Topography by photogrammetric methods from aerial photographs taken 1965. Revised from aerial photographs taken 1983
Field checked 1984. Map edited 1984
Hydrography compiled from information furnished by Wisconsin Department of Natural Resources
Projection and 10,000-foot grid ticks: Wisconsin coordinate system, north zone (Lambert conformal conic)
1000-meter Universal Transverse Mercator grid, zone 15
1927 North American Datum
To place on the predicted North American Datum 1983, move the projection lines 6 meters north and 11 meters east as shown by dashed corner ticks
Modification to USGS base map by the Geomatics Service Center from 1986 and 1988 aerial photography and 1990 correction guides furnished by the Eastern Region.
Landnet revised according to additional Forest Service evidence.

SCALE 1:24,000
NATIONAL GEODETIC VERTICAL DATUM OF 1929
CONTOUR INTERVAL 10 FEET
TOWNSHIP AND SECTION LINE CLASSIFICATION
— National Forest Boundary
— National Forest Land as of 1990
— Surveyed, Location Reliable
— Surveyed, Location Approximate
— Unsurveyed, Protraction
— Primary Highway
— Secondary Highway
— Improved Road, Paved
— Improved Road, Gravel
— Improved Road, Dirt
— Unimproved Road, Dirt
— Trail

Interior—Geological Survey, Reston, Virginia—1984
Copies of this map are available for purchase at Forest Supervisor's Headquarters 1170 South 4th Avenue Park Falls, WI 54552
SHANAGOLDEN, WIS.
SW4 GLIDDEN 15' QUADRANGLE
46090-A6-TF-024
1984
DMA 2876 II SW-SERIES V861
A 15.28: C42/7/98/46090-A1

A.H. ROBINSON
MAP LIBRARY
NOV - 6 1995
University of Wisconsin
Madison
U.S. Depository Copy
DO NOT DISCARD
G
4122
.25
524
.V55
Sh.32