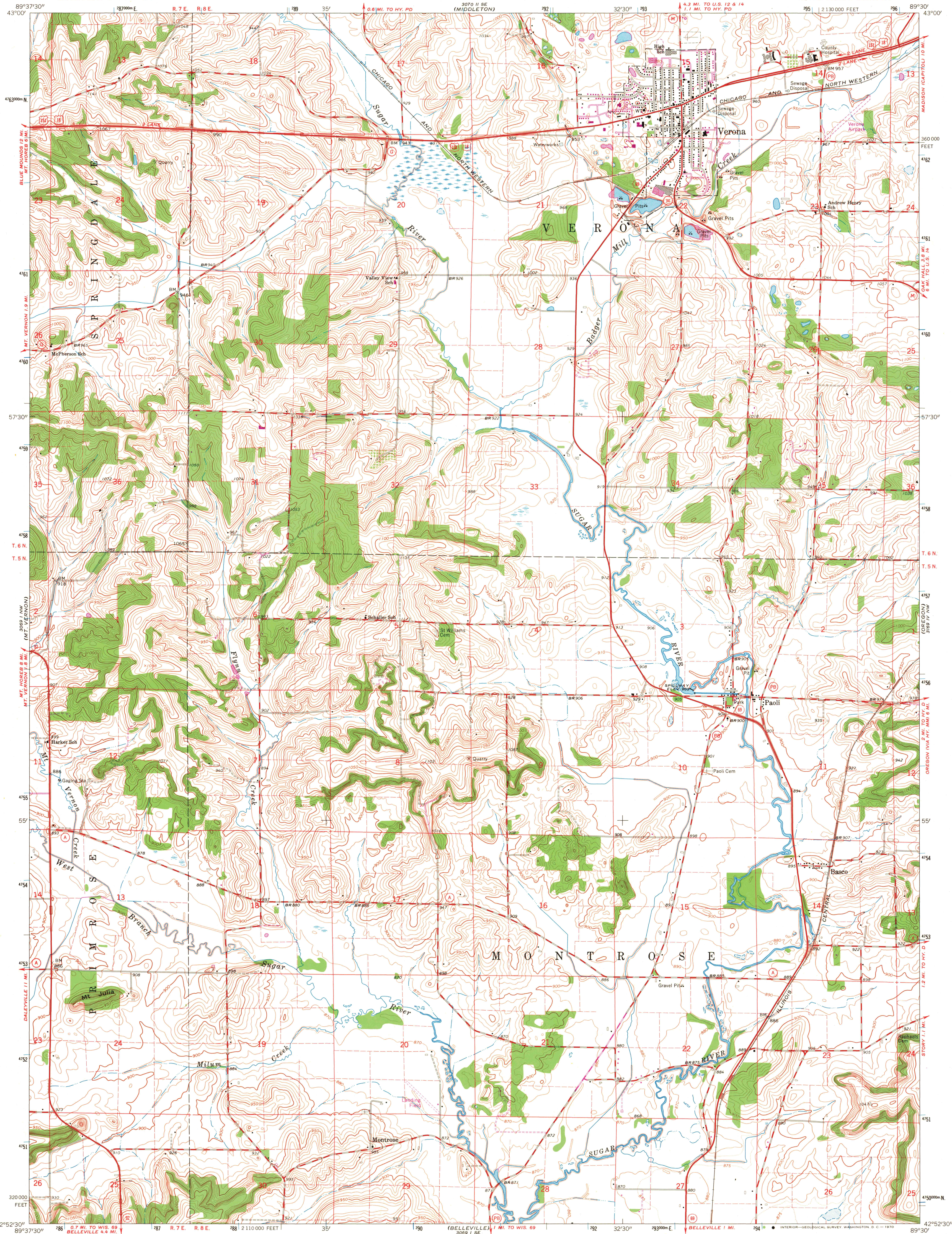


UNITED STATES
DEPARTMENT OF THE INTERIOR
GEOLOGICAL SURVEY

VERONA QUADRANGLE
WISCONSIN-DANE CO.
7.5 MINUTE SERIES (TOPOGRAPHIC)
NE/4 NEW GLARUS 15' QUADRANGLE



Mapped, edited, and published by the Geological Survey in cooperation with State of Wisconsin agencies
Control by USGS and USC&GS
Topography by photogrammetric methods from aerial photographs taken 1961. Field checked 1962
Polyconic projection. 1927 North American datum
10,000-foot grid based on Wisconsin coordinate system, south zone
1000-meter Universal Transverse Mercator grid ticks, zone 16, shown in blue
Fine red dashed lines indicate selected fence and field lines where generally visible on aerial photographs. This information is unchecked
Revisions shown in purple compiled from aerial photographs taken 1969. This information not field checked

SCALE 1:24,000
CONTOUR INTERVAL 10 FEET
DOTTED LINES REPRESENT 5-FOOT CONTOURS.
DATUM IS MEAN SEA LEVEL
THIS MAP COMPLIES WITH NATIONAL MAP ACCURACY STANDARDS
FOR SALE BY U. S. GEOLOGICAL SURVEY, WASHINGTON, D. C. 20542
AND BY THE WISCONSIN GEOLOGICAL AND NATURAL HISTORY SURVEY, MADISON, WISCONSIN 53706
A FOLDER DESCRIBING TOPOGRAPHIC MAPS AND SYMBOLS IS AVAILABLE ON REQUEST

ROAD CLASSIFICATION

Heavy-duty	Light-duty
Medium-duty	Unimproved dirt
U. S. Route	State Route

VERONA, WIS.
NE/4 NEW GLARUS 15' QUADRANGLE
N4252.5-W8930.7/5
1962
PHOTOREVISED 1969
AMS 3069 I NE-SERIES W861

U.S.G.S.
FILE COPY
TOPOGRAPHIC DIVISION

2680
MAR 2 1970