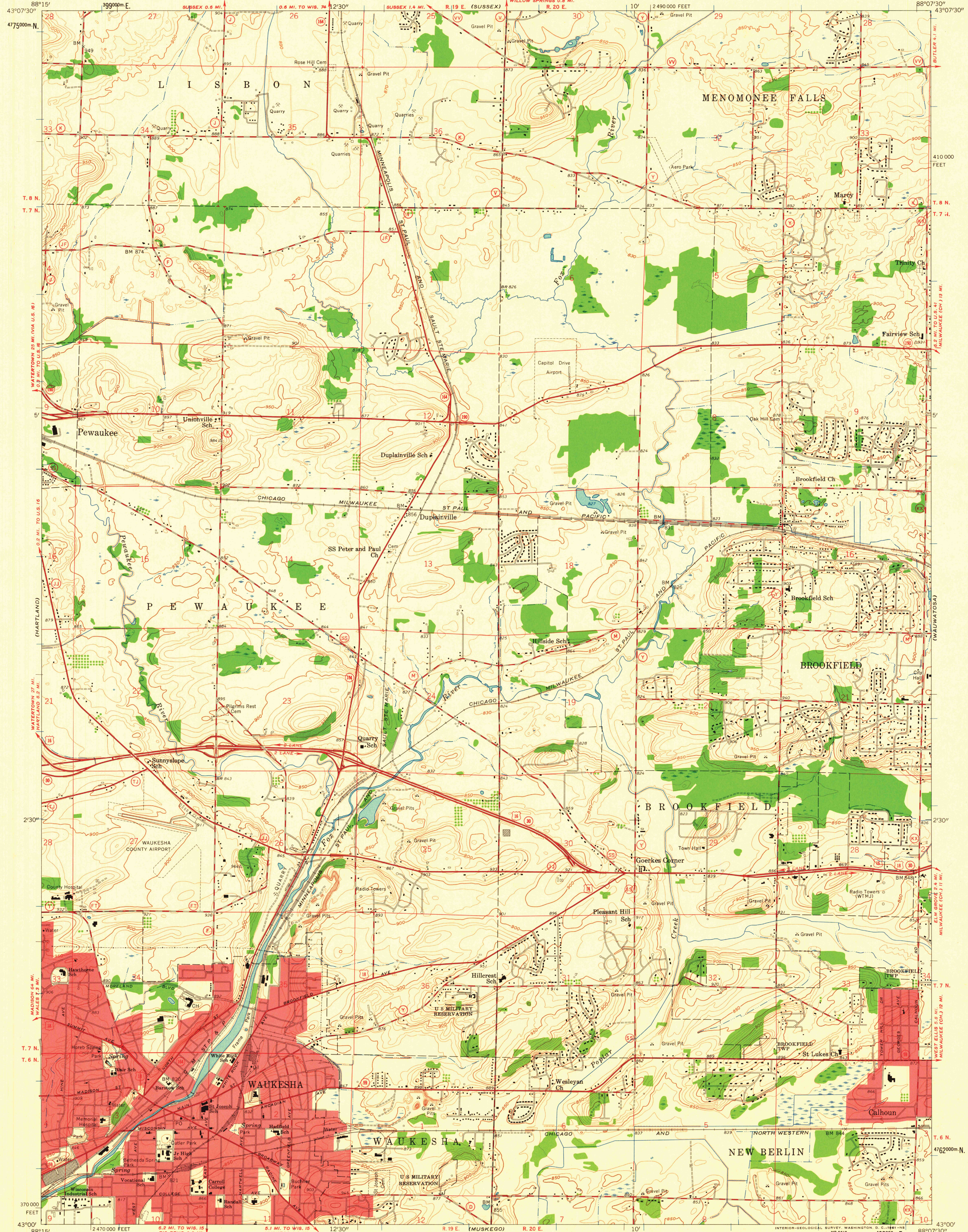


UNITED STATES  
DEPARTMENT OF THE INTERIOR  
GEOLOGICAL SURVEY

WAUKESHA QUADRANGLE  
WISCONSIN-WAUKESHA CO.  
7.5 MINUTE SERIES (TOPOGRAPHIC)  
SW 1/4 WAUKESHA 15' QUADRANGLE



Mapped, edited, and published by the Geological Survey  
Control by USGS and USC&GS  
Topography from aerial photographs by photogrammetric methods  
and in part by the City of Brookfield. Aerial photographs  
taken 1954-1955. Field check 1958-1959  
Polyconic projection. 1927 North American datum  
10,000-foot grid based on Wisconsin coordinate system, south zone  
1000-meter Universal Transverse Mercator grid ticks,  
zone 16, shown in blue  
Red tint indicates areas in which only  
landmark buildings are shown

APPROXIMATE MEAN  
DECLINATION, 1959

THIS MAP COMPLIES WITH NATIONAL MAP ACCURACY STANDARDS  
FOR SALE BY U.S. GEOLOGICAL SURVEY, WASHINGTON 25, D. C.  
AND BY THE WISCONSIN GEOLOGICAL AND NATURAL HISTORY SURVEY, MADISON 6, WISCONSIN  
A FOLDER DESCRIBING TOPOGRAPHIC MAPS AND SYMBOLS IS AVAILABLE ON REQUEST



U.S.G.S.  
FILE 00  
TOPOGRAPHIC DIVISION

WAUKESHA, WIS.  
SW 1/4 WAUKESHA 15' QUADRANGLE  
N4300-W8807.5/7.5

1959

3550