

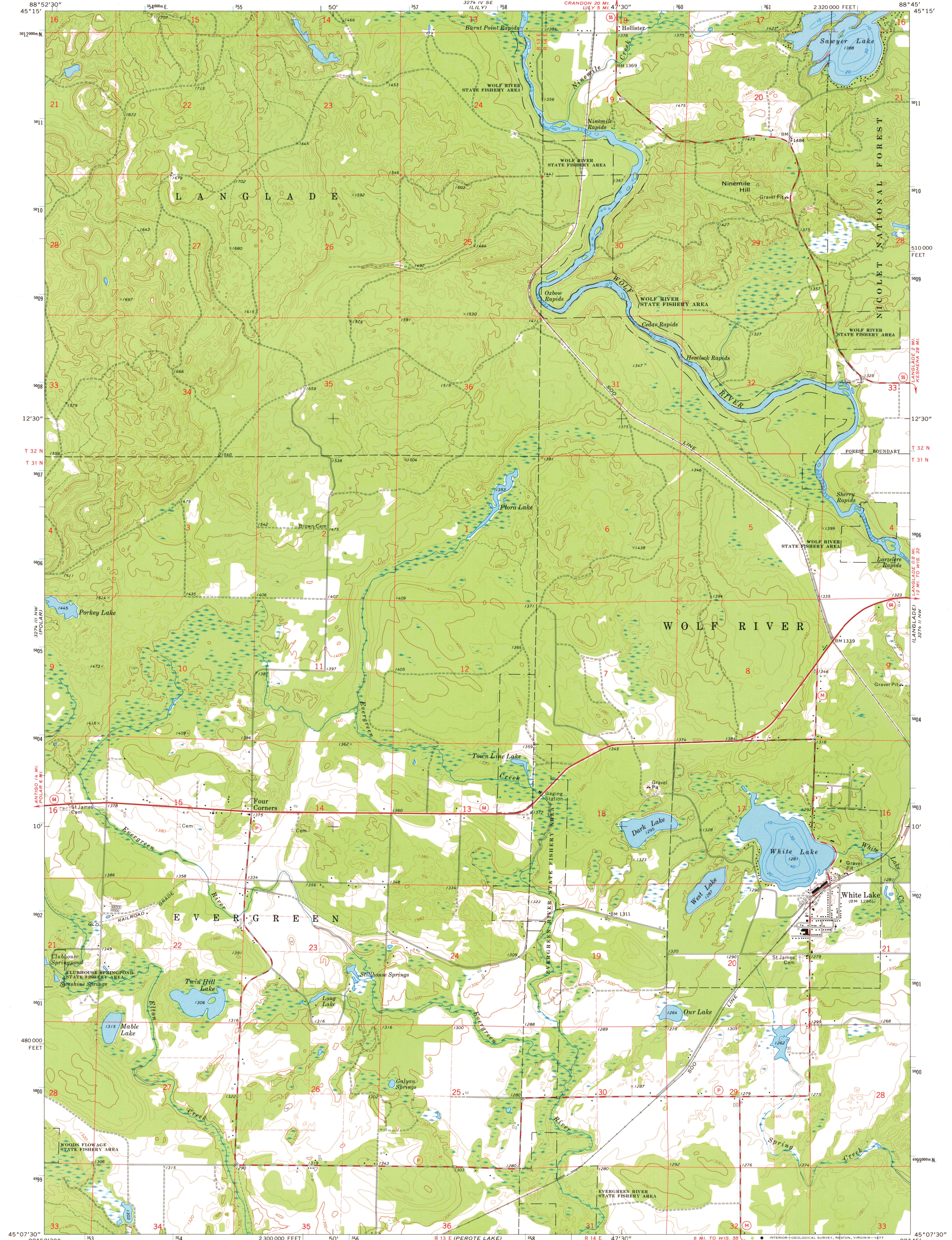
30° 15' 30" N
15° 15' 30" W
(PICKERELL)

UNITED STATES
DEPARTMENT OF THE INTERIOR
GEOLOGICAL SURVEY

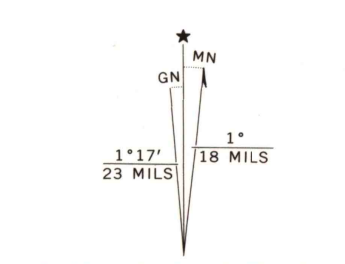
STATE OF WISCONSIN
DIVISION OF HIGHWAYS
GEOLOGICAL AND NATURAL HISTORY SURVEY

WHITE LAKE QUADRANGLE
WISCONSIN-LANGLADE CO.
7.5 MINUTE SERIES (TOPOGRAPHIC)
NE 1/4 WHITE LAKE 15' QUADRANGLE
2 320 000 FEET

30° 15' 30" N
15° 15' 30" W
(RESERVOIR POND)



Mapped, edited, and published by the Geological Survey in cooperation with the Wisconsin Division of Highways and Wisconsin Geological and Natural History Survey. Control by USGS and NOS/NOAA. Topography by photogrammetric methods from aerial photographs taken 1972. Field checked 1973. Hydrography compiled from information furnished by Wisconsin Department of Natural Resources. Projection and 10,000-foot grid ticks: Wisconsin coordinate system, central zone (Lambert conformal conic). 1000-metre Universal Transverse Mercator grid ticks, zone 16, shown in blue. 1927 North American datum. Fine red dashed lines indicate selected fence and field lines where generally visible on aerial photographs. This information is unchecked.



SCALE 1:24 000
CONTOUR INTERVAL 20 FEET
NATIONAL GEODETIC VERTICAL DATUM OF 1929
THIS MAP COMPLIES WITH NATIONAL MAP ACCURACY STANDARDS FOR SALE BY U.S. GEOLOGICAL SURVEY, RESTON, VIRGINIA 22092 AND BY THE WISCONSIN GEOLOGICAL AND NATURAL HISTORY SURVEY, MADISON, WISCONSIN 53706. A FOLDER DESCRIBING TOPOGRAPHIC MAPS AND SYMBOLS IS AVAILABLE ON REQUEST.

ROAD CLASSIFICATION
Primary highway, hard surface
Secondary highway, hard surface
Light-duty road, hard or improved surface
Unimproved road
Interstate Route
U.S. Route
State Route
USGS Historical File Topographic Division
WHITE LAKE, WIS.
NE 1/4 WHITE LAKE 15' QUADRANGLE
N4507.5-W8845/7.5
1973
AMS 3274 III NE-SERIES Y861
MAY 19 1977