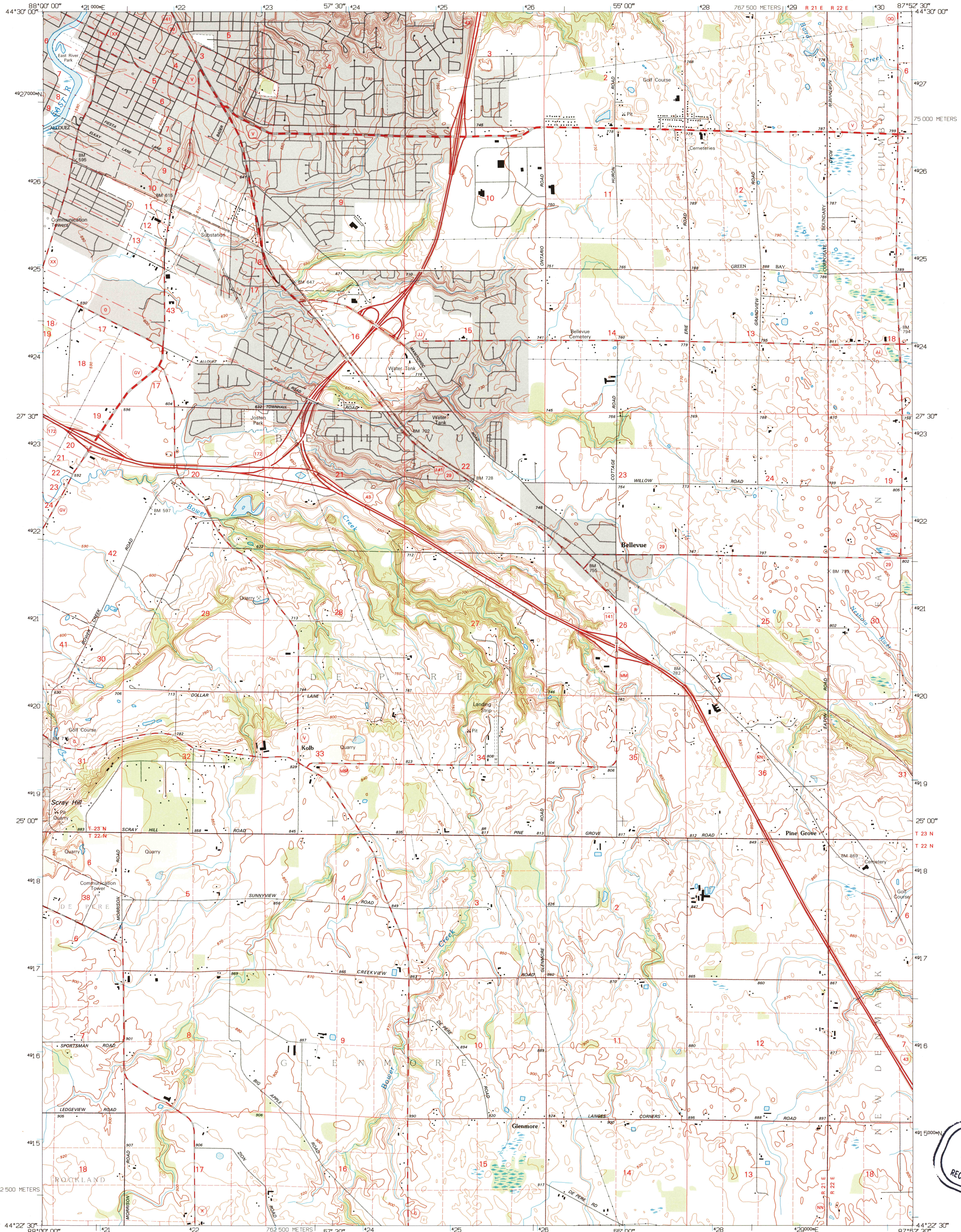


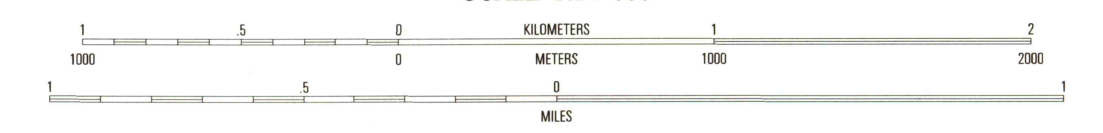
UNITED STATES  
DEPARTMENT OF THE INTERIOR  
GEOLOGICAL SURVEY

BELLEVUE QUADRANGLE  
WISCONSIN-BROWN CO.  
7.5-MINUTE SERIES (TOPOGRAPHIC)



Produced by the United States Geological Survey  
Compiled from imagery dated 1978-79. Revised from imagery dated 1992. PLS and survey control current as of 1981.  
Contours and elevations current as of 1978-79. Map edited 1995.  
North American Datum of 1983 (NAD 83). Projection and blue 1000-meter ticks: Universal Transverse Mercator, zone 16.  
2500-meter ticks: Wisconsin Coordinate System of 1983 (central zone).  
North American Datum of 1927 (NAD 27) is shown by dashed corner ticks. The values of the shift between NAD 83 and NAD 27 for 7.5-minute intersections are obtainable from National Geodetic Survey NADCON software.

UTM GRID AND 1995 MAGNETIC NORTH DECLINATION AT CENTER OF SHEET



CONTOUR INTERVAL 10 FEET  
NATIONAL GEODETIC VERTICAL DATUM OF 1929

THIS MAP COMPLIES WITH NATIONAL MAP ACCURACY STANDARDS  
FOR SALE BY U.S. GEOLOGICAL SURVEY  
DENVER, COLORADO 80225, OR RESTON, VIRGINIA 22092  
AND WISCONSIN GEOLOGICAL AND NATURAL HISTORY SURVEY, MADISON, WISCONSIN 53706  
A FOLDER DESCRIBING TOPOGRAPHIC MAPS AND SYMBOLS IS AVAILABLE ON REQUEST



QUADRANGLE LOCATION

1	2	3	1 Green Bay West
			2 Green Bay East
			3 New Franken
4		5	4 De Pere
			5 Poland
			6 Greenleaf
6	7	8	7 Marion
			8 Denmark

ROAD CLASSIFICATION  
Primary highway  
Secondary highway  
Light-duty road, hard or improved surface  
Unimproved road  
Interstate Route  
U.S. Route  
State Route

BELLEVUE, WI  
44087-D8-TF-024  
1992

DMA 3472 IV NW-SERIES V861

