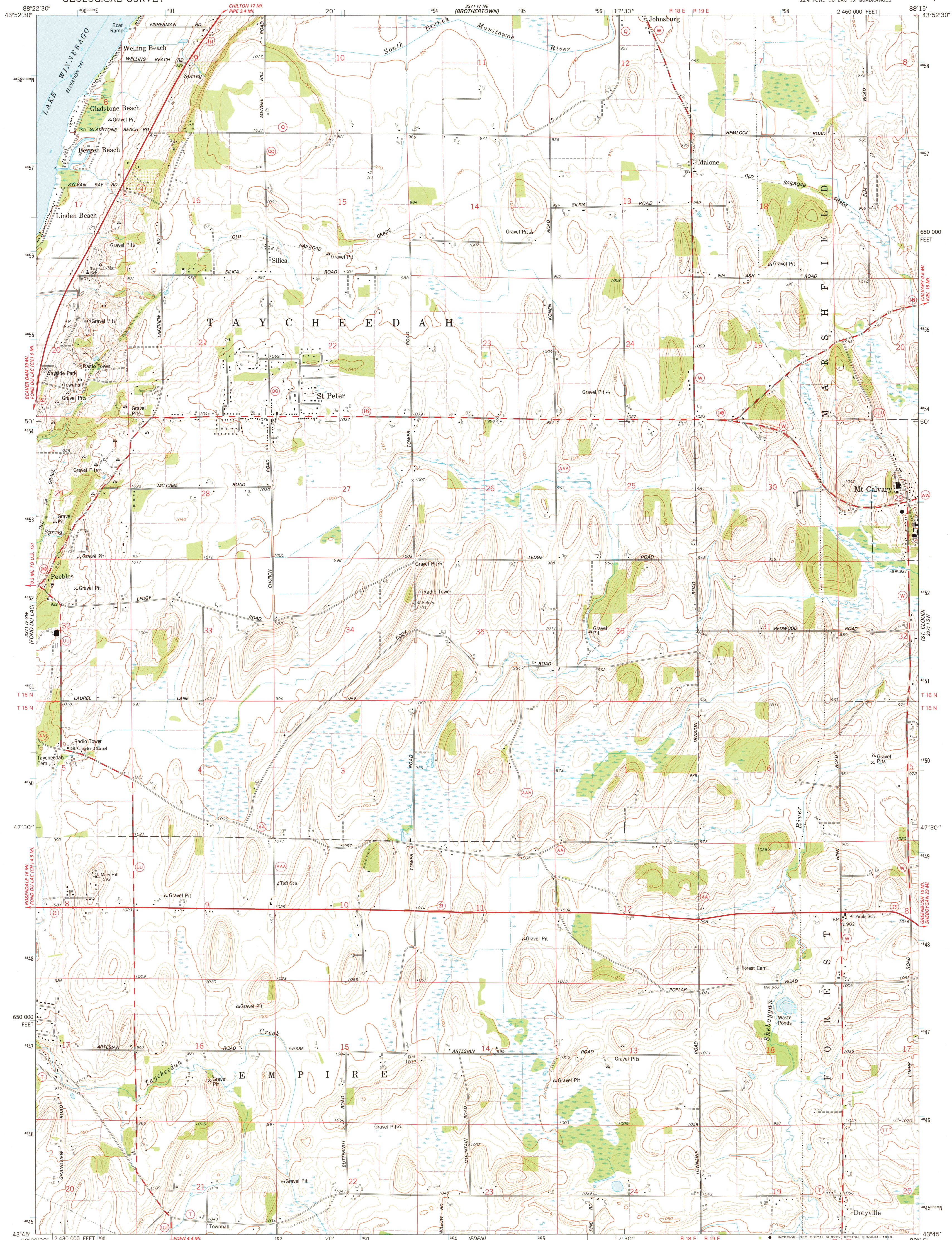
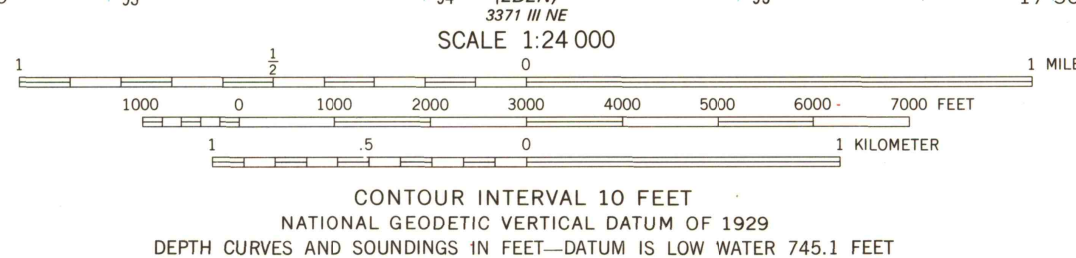


UNITED STATES
DEPARTMENT OF THE INTERIOR
GEOLOGICAL SURVEY

ST. PETER QUADRANGLE
WISCONSIN—FOND DU LAC CO.
7.5 MINUTE SERIES (TOPOGRAPHIC)
SE 4 FOND DU LAC 15' QUADRANGLE



Mapped, edited, and published by the Geological Survey
Control by USGS and NOS/NOAA
Topography by photogrammetric methods from aerial
photographs taken 1973. Field checked 1974
Selected hydrographic data compiled from U. S. Lake Survey Chart 720
(1973). This information is not intended for navigational purposes
Projection and 10,000-foot grid ticks: Wisconsin coordinate
system, south zone (Lambert conformal conic)
1000 meter Universal Transverse Mercator grid ticks,
zone 16, shown in blue. 1927 North American datum
Fine red dashed lines indicate selected fence and field lines where
generally visible on aerial photographs. This information is unchecked



THIS MAP COMPLIES WITH NATIONAL MAP ACCURACY STANDARDS
FOR SALE BY U. S. GEOLOGICAL SURVEY, RESTON, VIRGINIA 22092
AND WISCONSIN GEOLOGICAL AND NATURAL HISTORY SURVEY, MADISON, WISCONSIN 53706
A FOLDER DESCRIBING TOPOGRAPHIC MAPS AND SYMBOLS IS AVAILABLE ON REQUEST



ROAD CLASSIFICATION
Primary highway, hard surface ————
Secondary highway, hard surface ————
Light-duty road, hard or improved surface ————
Unimproved road ————
Interstate Route ————
U. S. Route ————
State Route ————

USGS
Historical File
Topographic Division

ST. PETER, WIS.
SE 4 FOND DU LAC 15' QUADRANGLE
N4345-W8815/7.5
1974

AMS 3371 IV SE-SERIES 7861

DEC 18 1978