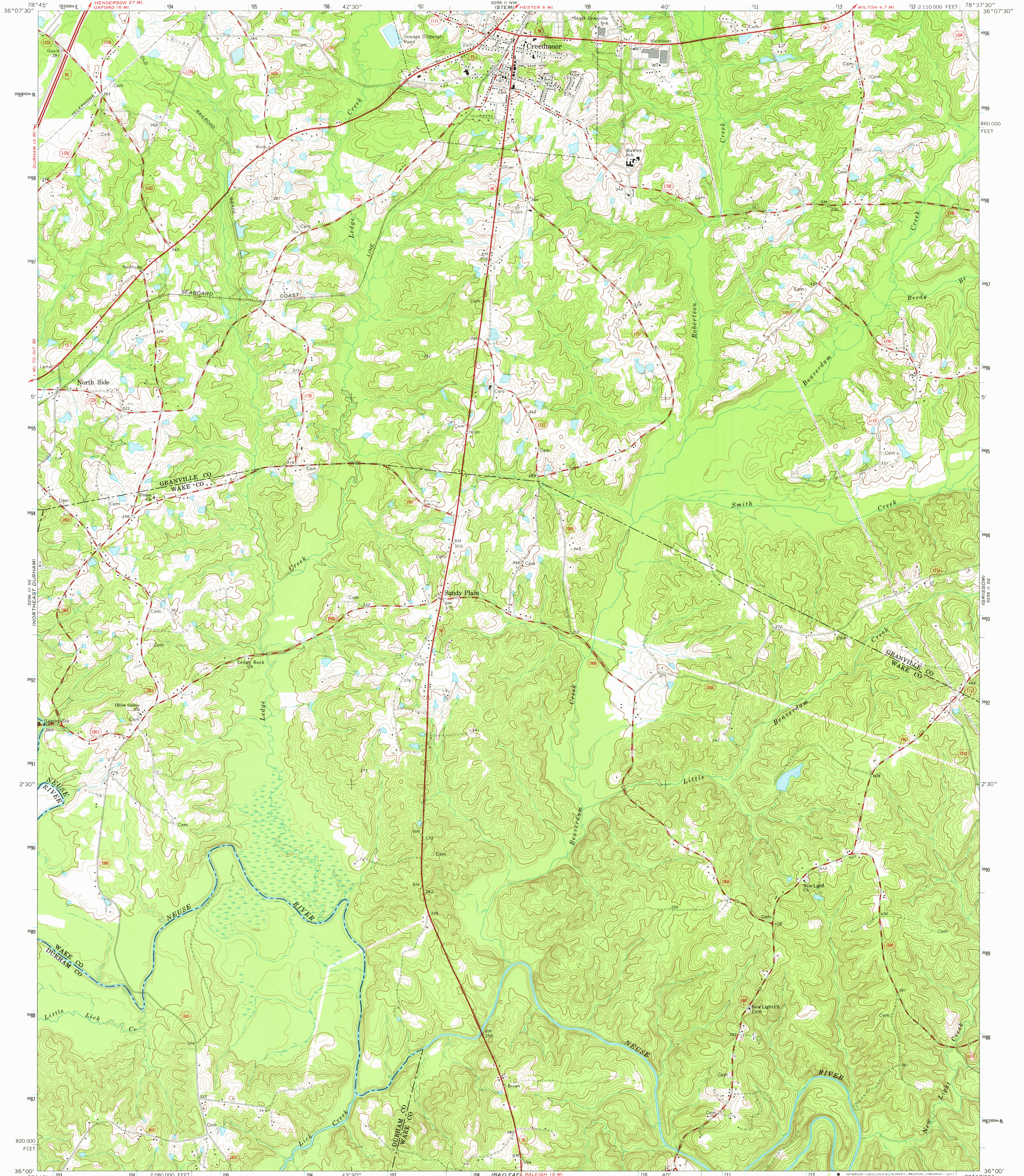


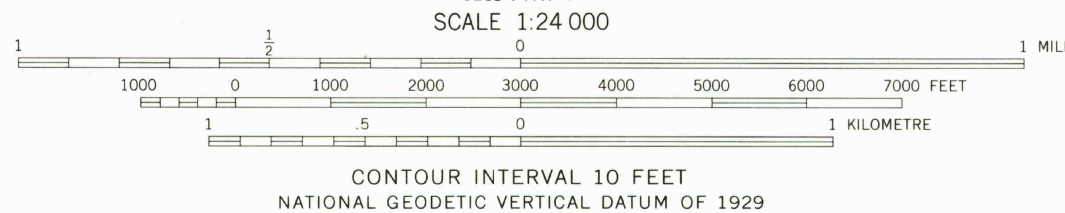
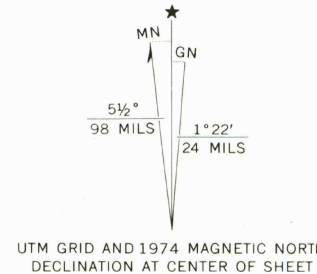
UNITED STATES
DEPARTMENT OF THE INTERIOR
GEOLOGICAL SURVEY

STATE OF NORTH CAROLINA
DEPARTMENT OF NATURAL AND ECONOMIC RESOURCES
RALEIGH, NORTH CAROLINA

CREEDMOOR QUADRANGLE
NORTH CAROLINA
7.5 MINUTE SERIES (TOPOGRAPHIC)
SW/4 CREEDMOOR 15' QUADRANGLE



Mapped, edited, and published by the Geological Survey
Control by USGS, NOS/NOAA, USCE, and North Carolina Geodetic Survey
Topography by photogrammetric methods from aerial photographs
taken 1974. Field checked 1974
Projection and 10,000-foot grid ticks: North Carolina coordinate
system (Lambert conformal conic)
1000-metre Universal Transverse Mercator grid ticks,
zone 17, shown in blue. 1927 North American datum
Fine red dashed lines indicate selected fence and field lines where
generally visible on aerial photographs. This information is unchecked



ROAD CLASSIFICATION
Primary highway, hard surface
Secondary highway, hard surface
Light-duty road, hard or improved surface
Unimproved road
Interstate Route
U. S. Route
State Route

USGS
Historical File
Topographic Division

CREEDMOOR, N. C.
SW/4 CREEDMOOR 15' QUADRANGLE
N3600—W7837.5/7.5
1974
AMS 5256 II SW—SERIES V842

MAY 19 1977