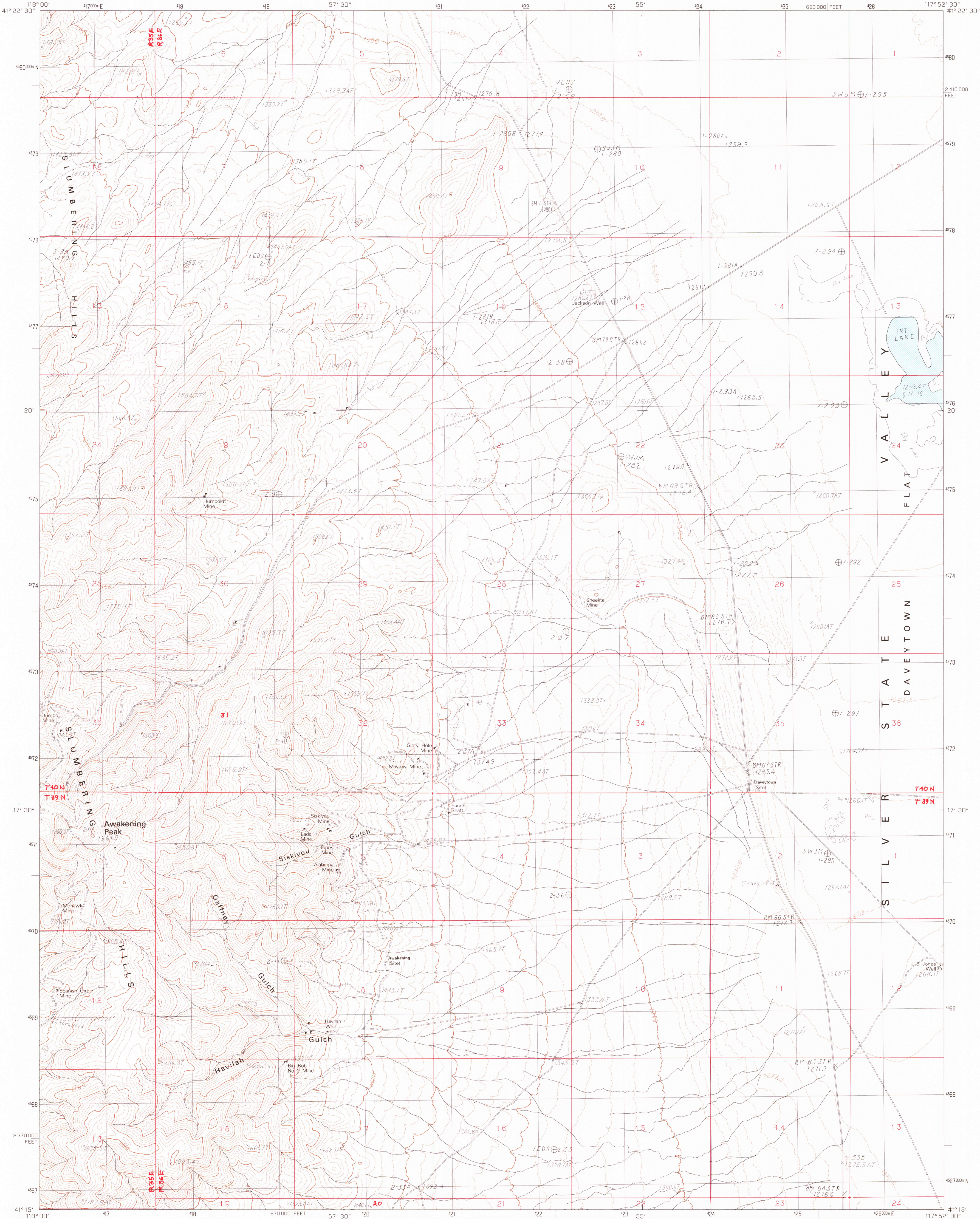


UNITED STATES
DEPARTMENT OF THE INTERIOR
GEOLOGICAL SURVEY

AWAKENING PEAK QUADRANGLE
NEVADA—HUMBOLDT CO.
7.5 MINUTE SERIES (TOPOGRAPHIC)



PRODUCED BY THE UNITED STATES GEOLOGICAL SURVEY
CONTROL BY USGS, NOS/NOAA
COMPILED FROM AERIAL PHOTOGRAPHS TAKEN 1976
FIELD CHECKED 1978. MAP EDITED 1982
PROJECTION: UNIVERSAL TRANSVERSE MERCATOR
GRID: 1000-METER UNIVERSAL TRANSVERSE MERCATOR ZONE 11
UTM GRID DECLINATION NEVADA, WEST ZONE
1980 MAGNETIC NORTH DECLINATION 17° EAST
HORIZONTAL DATUM NATIONAL GEODETIC DATUM OF 1929
To place on the predicted North American Datum of 1983,
move the projection lines as shown by dashed corner ticks
(14 meters north/81 meters east)
There may be private inholdings within the boundaries of any
Federal and State Reservations shown on this map

PROVISIONAL MAP
Produced from original
manuscript drawings. Infor-
mation shown as of date of
field check.

3

SCALE 1:24 000

1 0 1 0 2 0 KILOMETERS
1 0 1 0 2 0 METERS
1 0 1 0 2 0 MILES

CONTOUR INTERVAL 10 METERS
SUPPLEMENTARY CONTOUR INTERVAL 2.5 METERS
ELEVATIONS SHOWN TO THE NEAREST 0.1 METER
To convert meters to feet multiply by 3.2808
To convert feet to meters multiply by 0.3048

THIS MAP COMPLIES WITH NATIONAL MAP ACCURACY STANDARDS
FOR SALE BY U.S. GEOLOGICAL SURVEY, DENVER, COLORADO 80225, OR RESTON, VIRGINIA 22092

1	2	3	1	Sod House
4	5	6	2	Gallagher Flat
7	8	9	3	Andreno Ranch
10	11	12	4	Jackson Well
13	14	15	5	Mud Spring Canyon
16	17	18	6	Sombrero Peak
19	20	21	7	Silver State Draw
22	23	24	8	Bloody Run Peak

ADJOINING 7.5' QUADRANGLE NAMES

ROAD LEGEND

Improved Road
Unimproved Road
Trail
Interstate Route
U.S. Route
State Route

AWAKENING PEAK, NEVADA
PROVISIONAL EDITION 1982
41117-C8-TM-024

DEC 13 1982
RETURN TO:
USGS AND HISTORICAL MAP ARCHIVES