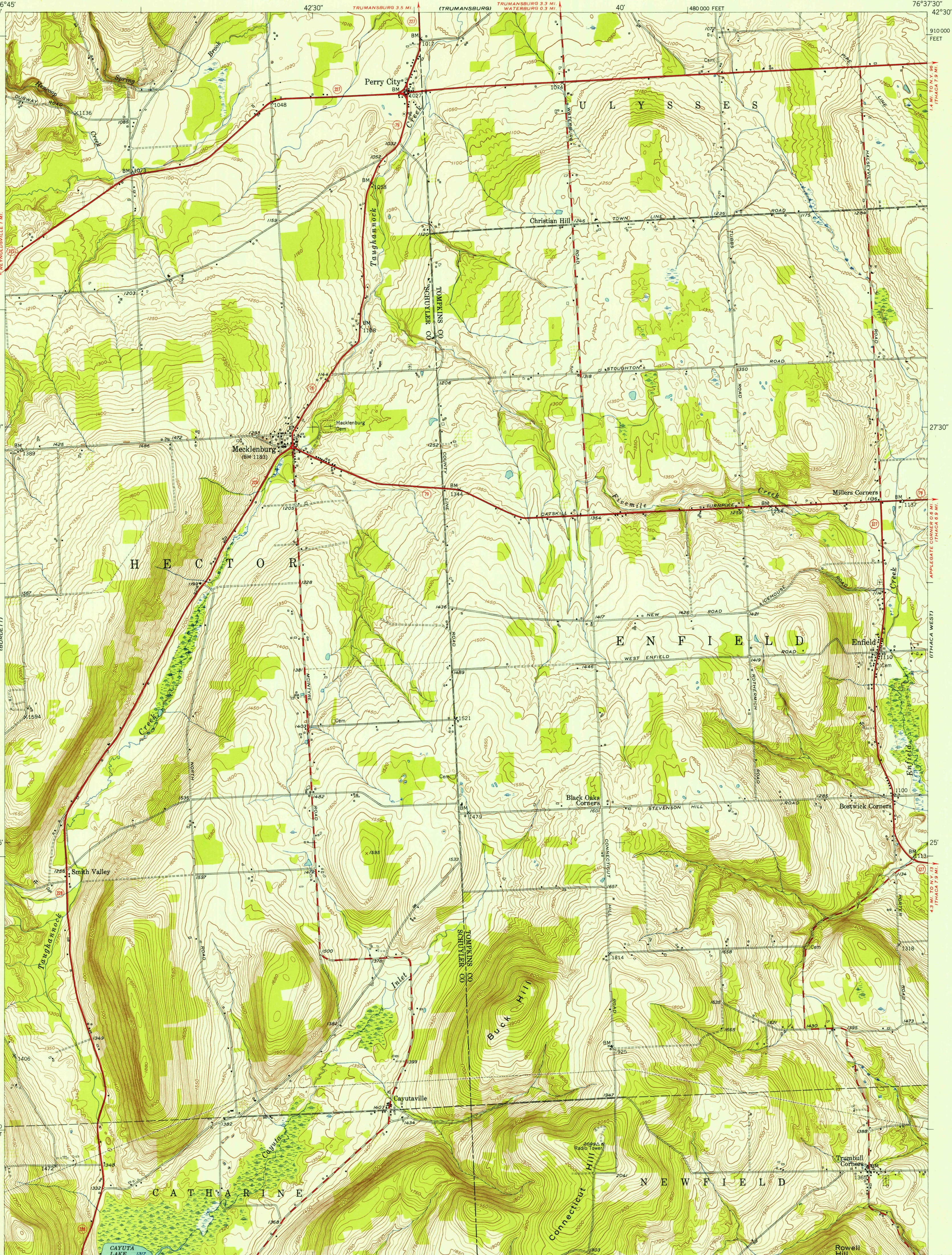
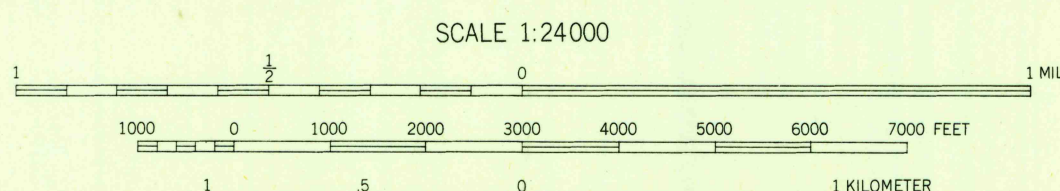


UNITED STATES  
DEPARTMENT OF THE INTERIOR  
GEOLOGICAL SURVEY

MECKLENBURG QUADRANGLE  
NEW YORK  
7.5 MINUTE SERIES (TOPOGRAPHIC)  
NW/4 ITHACA 15' QUADRANGLE



Mapped, edited, and published by the Geological Survey  
Control by USGS and USC&GS  
Topography from aerial photographs by multiplex methods  
Aerial photographs taken 1944. Field check 1950  
Polyconic projection. 1927 North American datum  
10,000-foot grid based on New York coordinate system,  
central zone



CONTOUR INTERVAL 10 FEET  
DATUM IS MEAN SEA LEVEL

THIS MAP COMPLIES WITH NATIONAL MAP ACCURACY STANDARDS  
FOR SALE BY U. S. GEOLOGICAL SURVEY, WASHINGTON 25, D. C.  
A FOLDER DESCRIBING TOPOGRAPHIC MAPS AND SYMBOLS IS AVAILABLE ON REQUEST

USGS  
Historical File  
Topographic Division

ROAD CLASSIFICATION

Heavy-duty 4 LANE 16 LANE Light-duty  
Medium-duty 4 LANE 16 LANE Unimproved dirt  
U. S. Route State Route

MECKLENBURG, N. Y.  
NW/4 ITHACA 15' QUADRANGLE  
N4222.5-W7637.5/7.5

1950

FILE COPY  
Inspection and Mapping