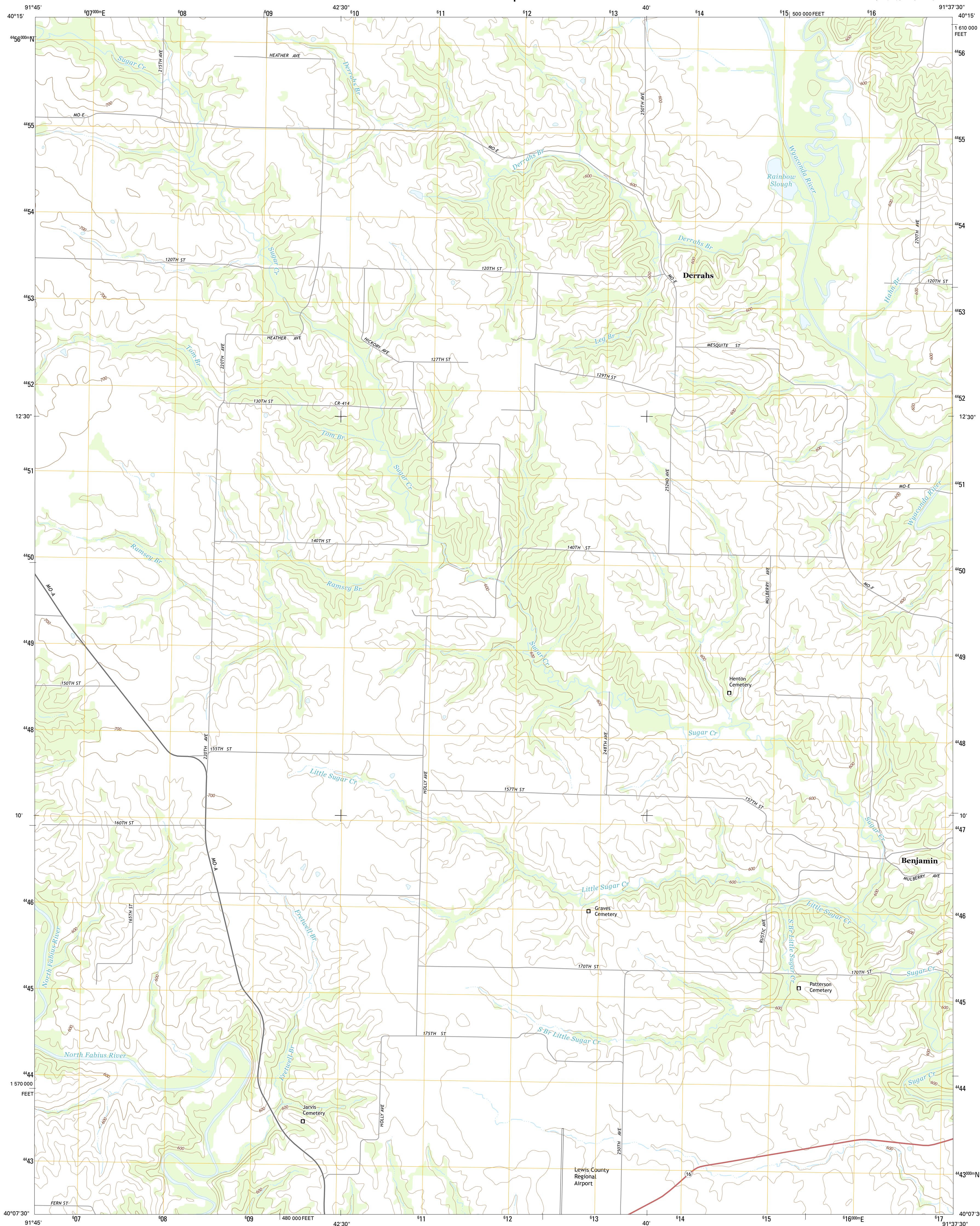




U.S. DEPARTMENT OF THE INTERIOR
U.S. GEOLOGICAL SURVEY



BENJAMIN QUADRANGLE
MISSOURI-LEWIS CO.
7.5-MINUTE SERIES

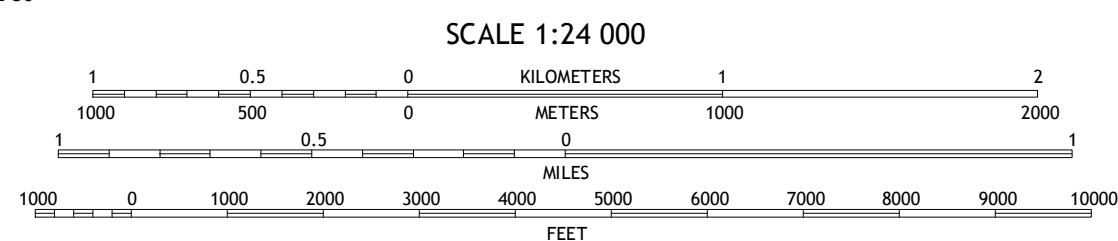
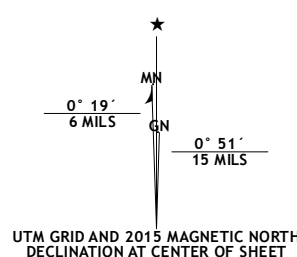


Produced by the United States Geological Survey

North American Datum of 1983 (NAD83)
World Geodetic System of 1984 (WGS84). Projection and
1 000-meter grid: Universal Transverse Mercator, Zone 15T
10 000-foot ticks: Missouri Coordinate System of 1983 (east
zone).

This map is not a legal document. Boundaries may be generalized for this map scale. Private lands within government reservations may not be shown. Obtain permission before entering private lands.

Imagery.....	NAIP, June 2012
Roads.....	HERE, ©2013
Names.....	GNIS, 2013
Hydrography.....	National Hydrography Dataset, 2012
Contours.....	National Elevation Dataset, 2004
Boundaries.....	Multiple sources; see metadata file 1972 - 2014
Public Land Survey System.....	BLM, 2011



CONTOUR INTERVAL 20 FEET
NORTH AMERICAN VERTICAL DATUM OF 1988

This map was produced to conform with the National Geospatial Program US Topo Product Standard, 2011. A metadata file associated with this product is draft version 0.6.18



QUADRANGLE LOCATION

1	2	3	1 Neepaw
4		5	2 Saint Patrick
6	7	8	3 Kahoka SE

ADJACENT QUADRANGLES

- 4 Williamstown
- 5 Canton
- 6 Lewistown
- 7 Monticello
- 8 La Grange

ADJOINING QUADRANGLES

ROAD CLASSIFICATION

Expressway Local Connector
Secondary Hwy Local Road
Ramp 4WD
Interstate Route US Route State Route

BENJAMIN, MO
2015

