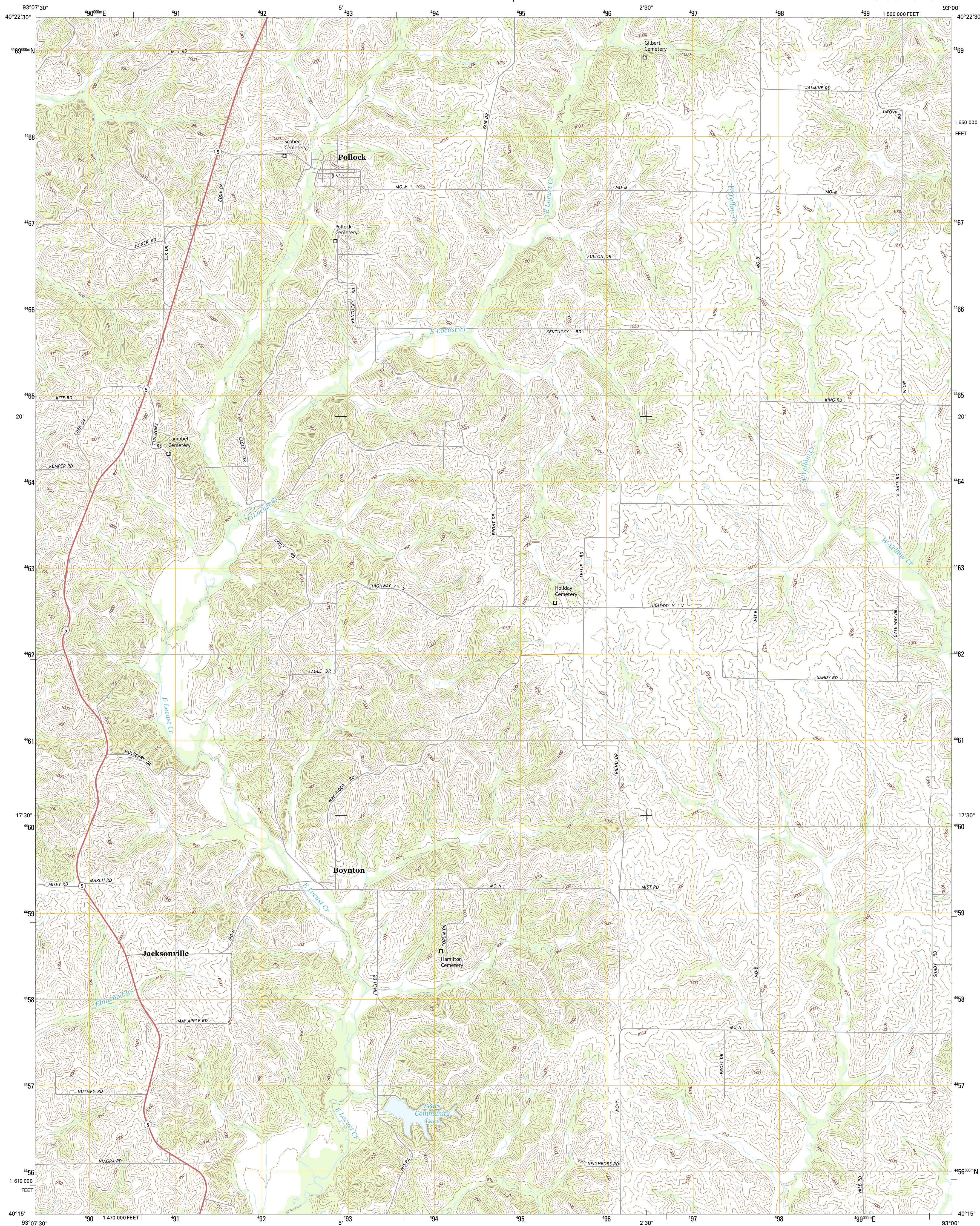




U.S. DEPARTMENT OF THE INTERIOR
U.S. GEOLOGICAL SURVEY



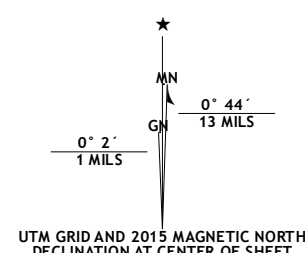
POLLOCK QUADRANGLE
MISSOURI-SULLIVAN CO.
7.5-MINUTE SERIES



Produced by the United States Geological Survey
North American Datum of 1983 (NAD83)
World Geodetic System of 1984 (WGS84). Projection and
1 000-meter grid: Universal Transverse Mercator, Zone 15T
10 000-foot ticks: Missouri Coordinate System of 1983 (central
zone)

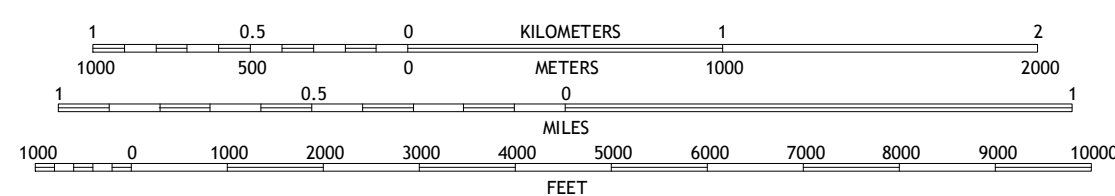
This map is not a legal document. Boundaries may be generalized for this map scale. Private lands within government reservations may not be shown. Obtain permission before entering private lands.

Imagery.....	NAIP, June 2012
Roads.....	HERE, ©2013
Names.....	GNIS, 2013
Hydrography.....	National Hydrography Dataset, 2012
Contours.....	National Elevation Dataset, 2004
Boundaries.....	Multiple sources; see metadata file 1972 - 2014
Public Land Survey System.....	BLM, 2011



U.S. National Grid
100,000-m Square ID
VE
Grid Zone Designation
15T

SCALE 1:24 000



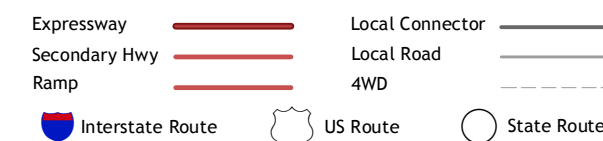
CONTOUR INTERVAL 10 FEET
NORTH AMERICAN VERTICAL DATUM OF 1988

This map was produced to conform with the
National Geospatial Program US Topo Product Standard, 2011.
Data file associated with this product is draft version 0.6.18



QUADRANGLE LOCATION

ROAD CLASSIFICATION



1	2	3
4		5
6	7	8

1 Pollock NW
2 Unionville West
3 Unionville East
4 Pollock SW
5 Green City
6 Milan West
7 Milan East
8 Mystic

AD JOINING QUADRANGLE

POLLOCK, MO
2015

