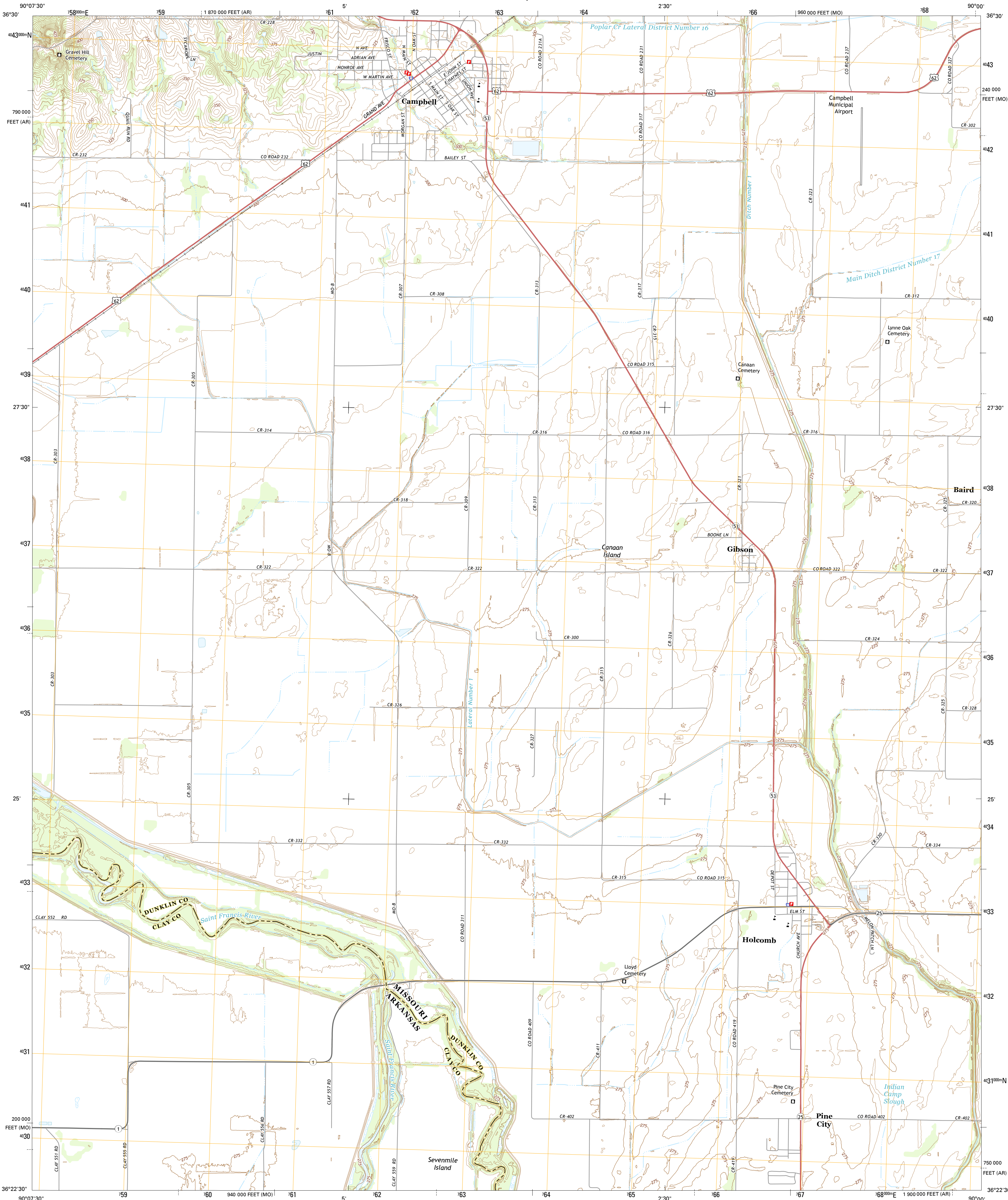




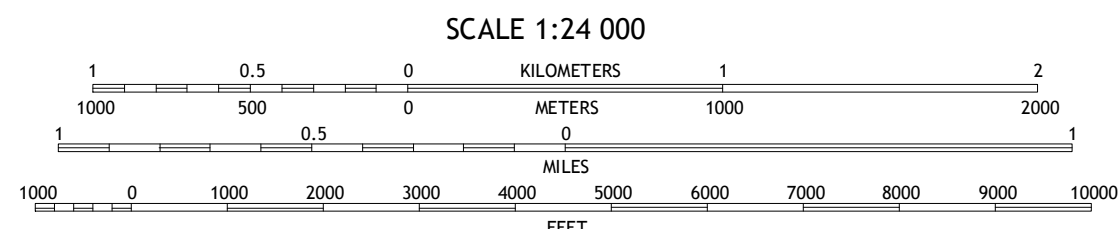
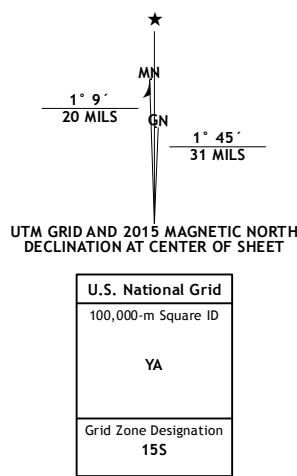
U.S. DEPARTMENT OF THE INTERIOR
U.S. GEOLOGICAL SURVEY



CAMPBELL QUADRANGLE
MISSOURI-ARKANSAS
7.5-MINUTE SERIES



Produced by the United States Geological Survey
North American Datum of 1983 (NAD83)
World Geodetic System of 1984 (WGS84) Projection and
1 000-meter grid: Universal Transverse Mercator, Zone 15S
10 000-foot ticks: Missouri Coordinate System of 1983 (east zone), Arkansas Coordinate System of 1983 (north zone)
This map is not a legal document. Boundaries may be generalized for this map scale. Private lands within government reservations may not be shown. Obtain permission before entering private lands.
Imagery:.....NAIP, June 2012 - July 2013
Roads:.....HERE, ©2013
Names:.....GNIS, 2013
Hydrography:.....National Hydrography Dataset, 2012
Contours:.....National Elevation Dataset, 2014
Boundaries:.....Multiple sources; see metadata file 1972 - 2014
Public Land Survey System:.....BLM, 2011



CONTOUR INTERVAL 5 FEET
NORTH AMERICAN VERTICAL DATUM OF 1988
This map was produced to conform with the
National Geospatial Program US Topo Product Standard, 2011.
A metadata file associated with this product is draft version 0.6.18



ROAD CLASSIFICATION	
Expressway	Local Connector
Secondary Hwy	Local Road
Ramp	4WD
Interstate Route	US Route
	State Route

1	2	3
4	5	6
7	8	9

ADJOINING QUADRANGLES

1 Glennville
2 Valley Ridge
3 Malden
4 Pisgott
5 Gideon
6 Greenway
7 Kennett North
8 Bragg City

CAMPBELL, MO-AR
2015

