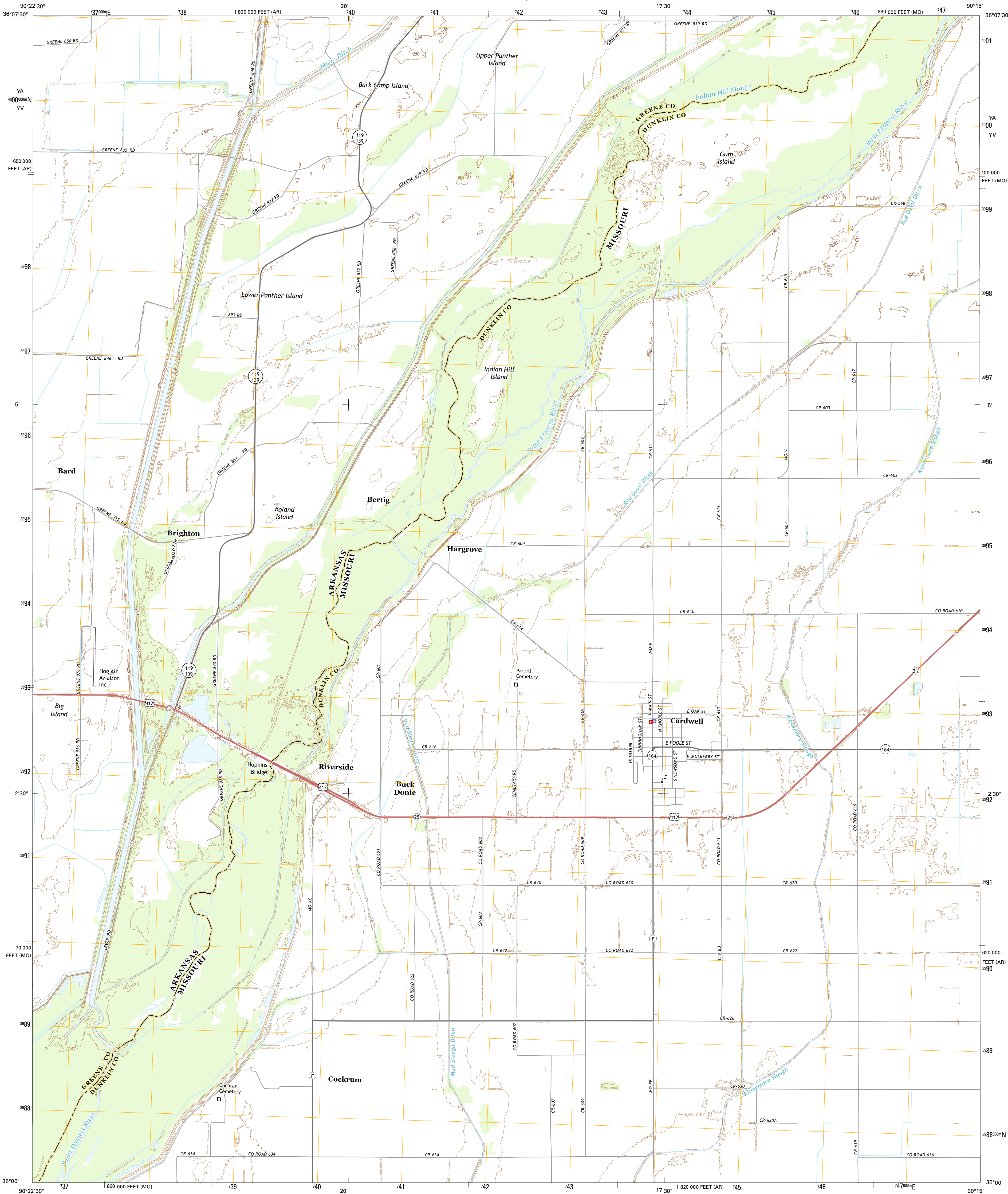




U.S. DEPARTMENT OF THE INTERIOR  
U.S. GEOLOGICAL SURVEY



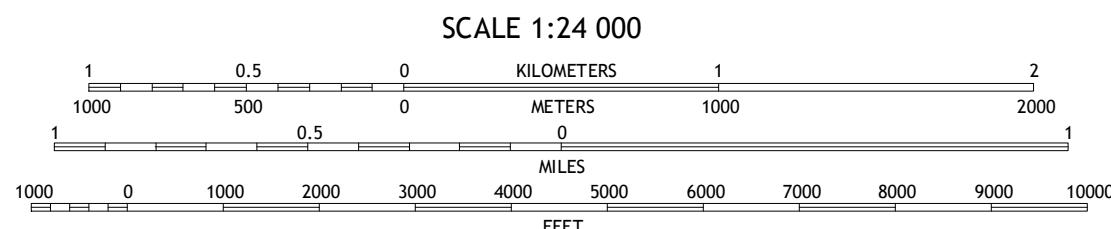
CARDWELL QUADRANGLE  
MISSOURI-ARKANSAS  
7.5-MINUTE SERIES



Produced by the United States Geological Survey  
North American Datum of 1983 (NAD83)  
World Geodetic System of 1984 (WGS84). Projection and  
1000-meter grid: Universal Transverse Mercator, Zone 15S  
10 000-foot ticks: Missouri Coordinate System of 1983 (east  
zone), Arkansas Coordinate System of 1983 (north zone)  
This map is not a legal document. Boundaries may be  
generalized for this map scale. Private lands within government  
reservations may not be shown. Obtain permission before  
entering private lands.  
Imagery.....NAIP, June 2012 - July 2013  
Roads.....HERE, C2013  
Names.....GNIS, 2013  
Hydrography.....National Hydrography Dataset, 2012  
Contours.....National Elevation Dataset, 2014  
Boundaries.....Multiple sources; see metadata file 1972 - 2014  
Public Land Survey System.....BLM, 2011

UTM GRID AND 2015 MAGNETIC NORTH  
DECLINATION AT CENTER OF SHEET

U.S. National Grid
100,000-m Square ID
YA 400000
YV 650000
Grid Zone Designation
15S



CONTOUR INTERVAL 5 FEET  
NORTH AMERICAN VERTICAL DATUM OF 1988  
This map was produced to conform with the  
National Geospatial Program US Topo Product Standard, 2011.  
A metadata file associated with this product is draft version 0.6.18



1	2	3	1 Marmaduke
4	5	6	2 Mounds
7	8	9	3 Senath
			4 Paragould East
			5 Arbyrd
			6 Dixie
			7 Leachville
			8 Manila North

ROAD CLASSIFICATION  
Expressway  
Secondary Hwy  
Ramp  
Local Connector  
Local Road  
4WD  
US Route  
State Route

CARDWELL, MO-AR  
2015

