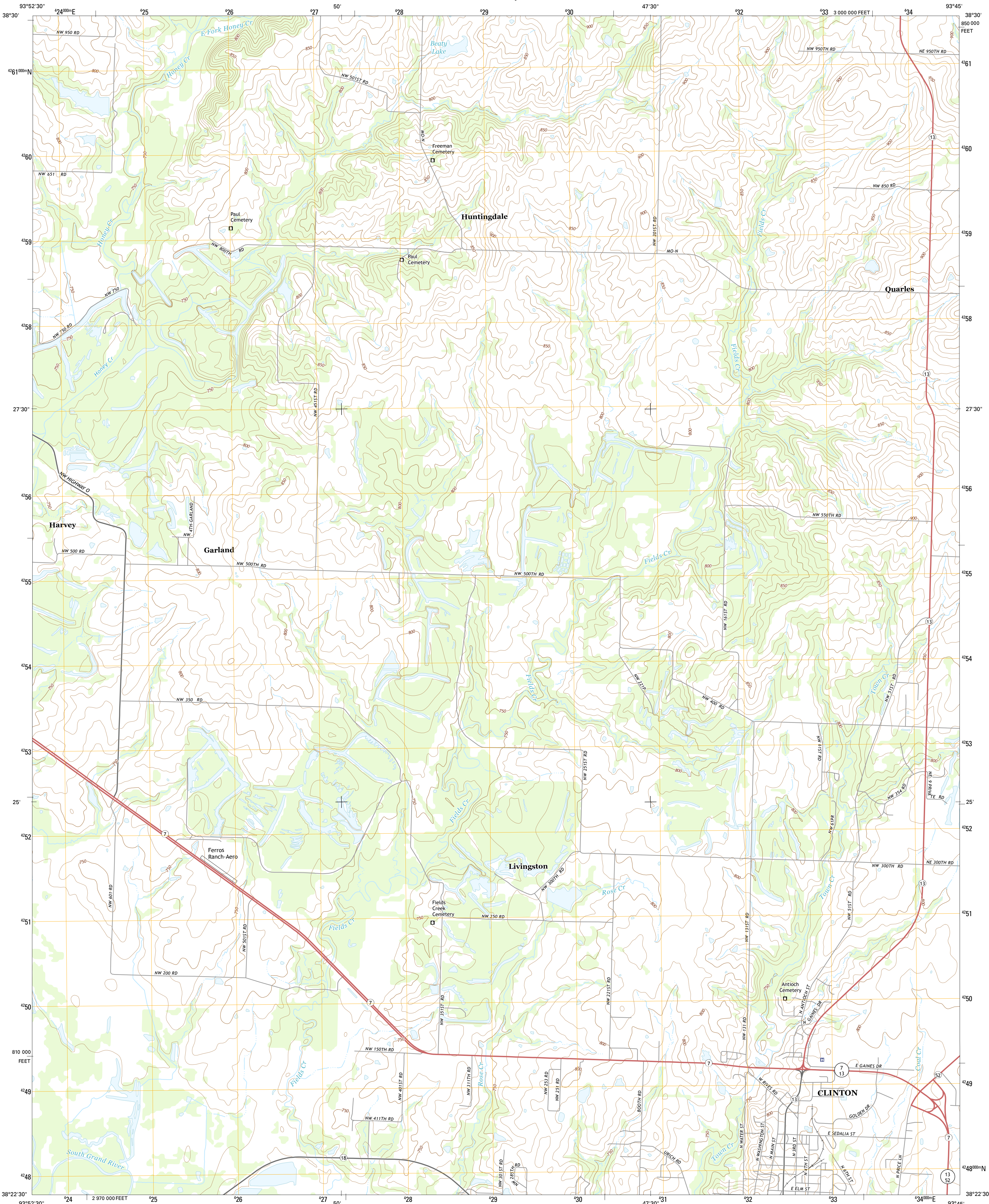




U.S. DEPARTMENT OF THE INTERIOR
U.S. GEOLOGICAL SURVEY



CLINTON NORTH QUADRANGLE
MISSOURI-HENRY CO.
7.5-MINUTE SERIES



Produced by the United States Geological Survey
North American Datum of 1983 (NAD83)
World Geodetic System of 1984 (WGS84). Projection and
1 000-meter grid: Universal Transverse Mercator, Zone 15S
10 000-foot ticks: Missouri Coordinate System of 1983 (west
zone)

This map is not a legal document. Boundaries may be
generalized for this map scale. Private lands within government
reservations may not be shown. Obtain permission before
entering private lands.

Imagery.....NAIP, June 2012
Roads.....HERE, ©2013
Names.....National Hydrography Dataset, 2012
Hydrography.....National Elevation Dataset, 2005
Contours.....Multiple sources; see metadata file 1972 - 2014
Boundaries.....BLM, 2011

UTM GRID AND 2015 MAGNETIC NORTH
DECLINATION AT CENTER OF SHEET

VC
Grid Zone Designation
15S

SCALE 1:24 000
1 000 0 500 0 500 1 000 2 000
KILOMETERS
1 000 0 1000 2000 3000 4000 5000 6000 7000 8000 9000 10000
METERS
1 000 0 1000 2000 3000 4000 5000 6000 7000 8000 9000 10000
MILES
FEET

CONTOUR INTERVAL 10 FEET
NORTH AMERICAN VERTICAL DATUM OF 1988

This map was produced to conform with the
National Geospatial Program US Topo Product Standard, 2011.
A metadata file associated with this product is draft version 0.6.18

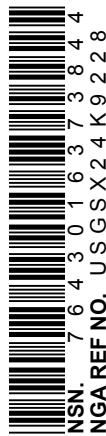


QUADRANGLE LOCATION

ROAD CLASSIFICATION
Expressway
Secondary Hwy
Ramp
Local Connector
Local Road
4WD
Interstate Route
US Route
State Route

ADJOINING QUADRANGLES
1 Blairstown
2 Chilhowee
3 Leeton
4 Hartwell
5 Calhoun West
6 Montrose
7 Clinton South
8 Gaines

CLINTON NORTH, MO
2015



NSN 7 6 4 3 0 1 6 3 7 3 6 4 4
NGA REF NO. USGS X 2 4 K 9 2 4 8