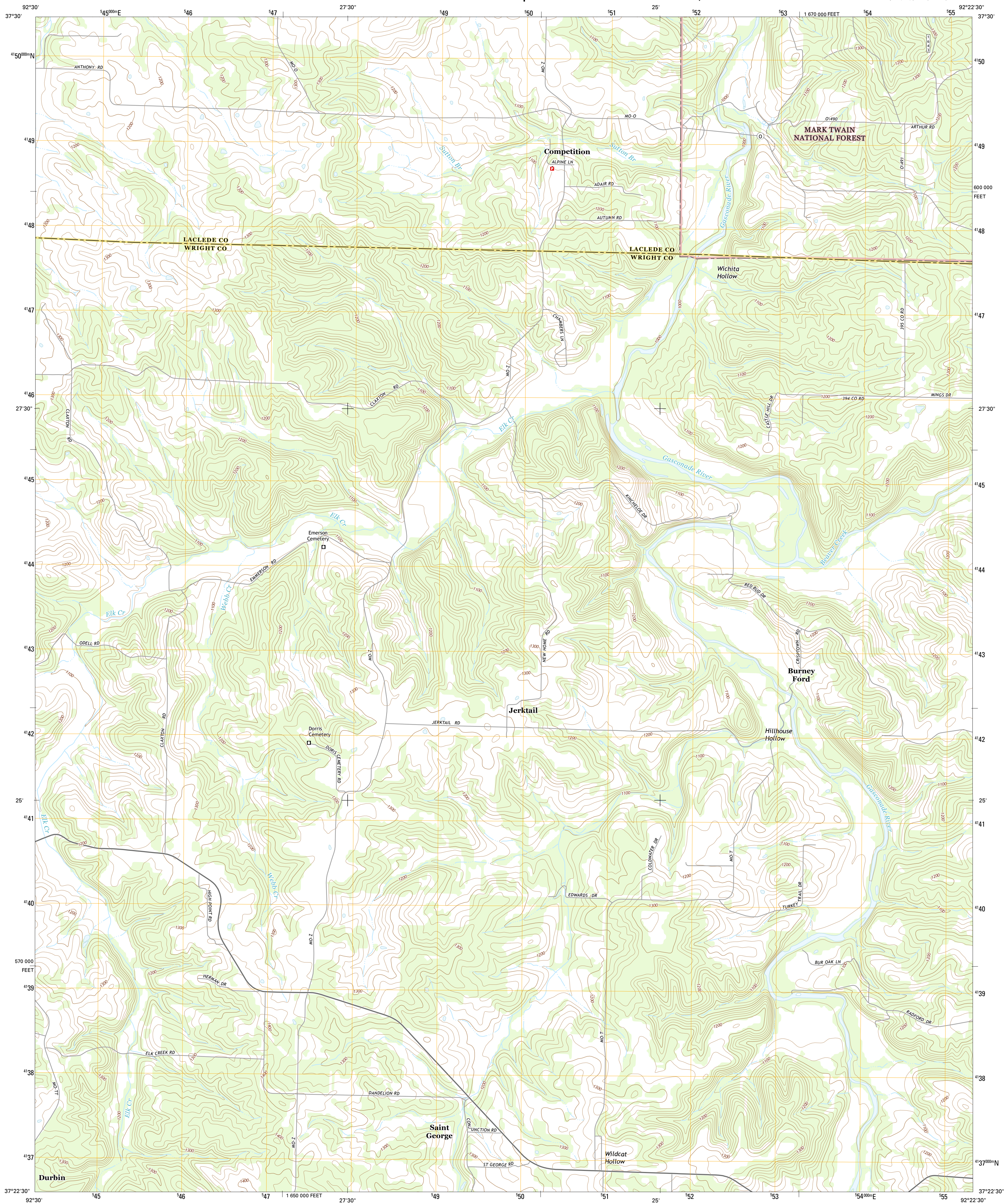




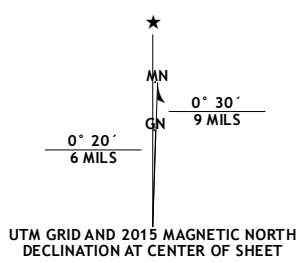
COMPETITION QUADRANGLE
MISSOURI
7.5-MINUTE SERIES



Produced by the United States Geological Survey
North American Datum of 1983 (NAD83)
World Geodetic System of 1984 (WGS84). Projection and
1 000-meter grid: Universal Transverse Mercator, Zone 15S
10 000-foot ticks: Missouri Coordinate System of 1983 (central
zone)

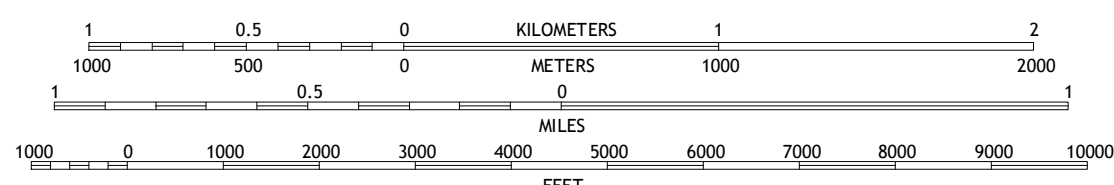
This map is not a legal document. Boundaries may be generalized for this map scale. Private lands within government reservations may not be shown. Obtain permission before entering private lands.

Imagery.....	NAIP, June	2012
Roads.....	HERE, FSTopo	2013
Roads within US Forest Service Lands.....	with limited Forest Service updates,	2013
Names.....	GNIS,	2013
Hydrography.....	National Hydrography Dataset,	2005
Contours.....	National Elevation Dataset,	2012
Boundaries.....	Multiple sources; see metadata file 1972	2014
Public Land Survey System.....	BLM,	2011



U.S. National Grid
100,000-m Square ID
WB
Grid Zone Designation
15S

SCALE 1:24 000



CONTOUR INTERVAL 20 FEET
NORTH AMERICAN VERTICAL DATUM OF 1988

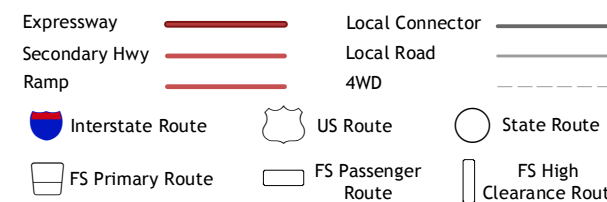
This map was produced to conform with the
National Geospatial Program US Topo Product Standard, 2011.
The data file associated with this product is draft version 0.6.18



1	2	3	1 Russ
4		5	2 Drew
6	7	8	3 Winniepeg
			4 Grovespring
			5 Manes
			6 Hartville
			7 Fuson
			8 Dawson

ADJOINING QUADRANGLES

ROAD CLASSIFICATION



Check with local Forest Service unit
for current travel conditions and restrictions.

COMPETITION, MO
2015