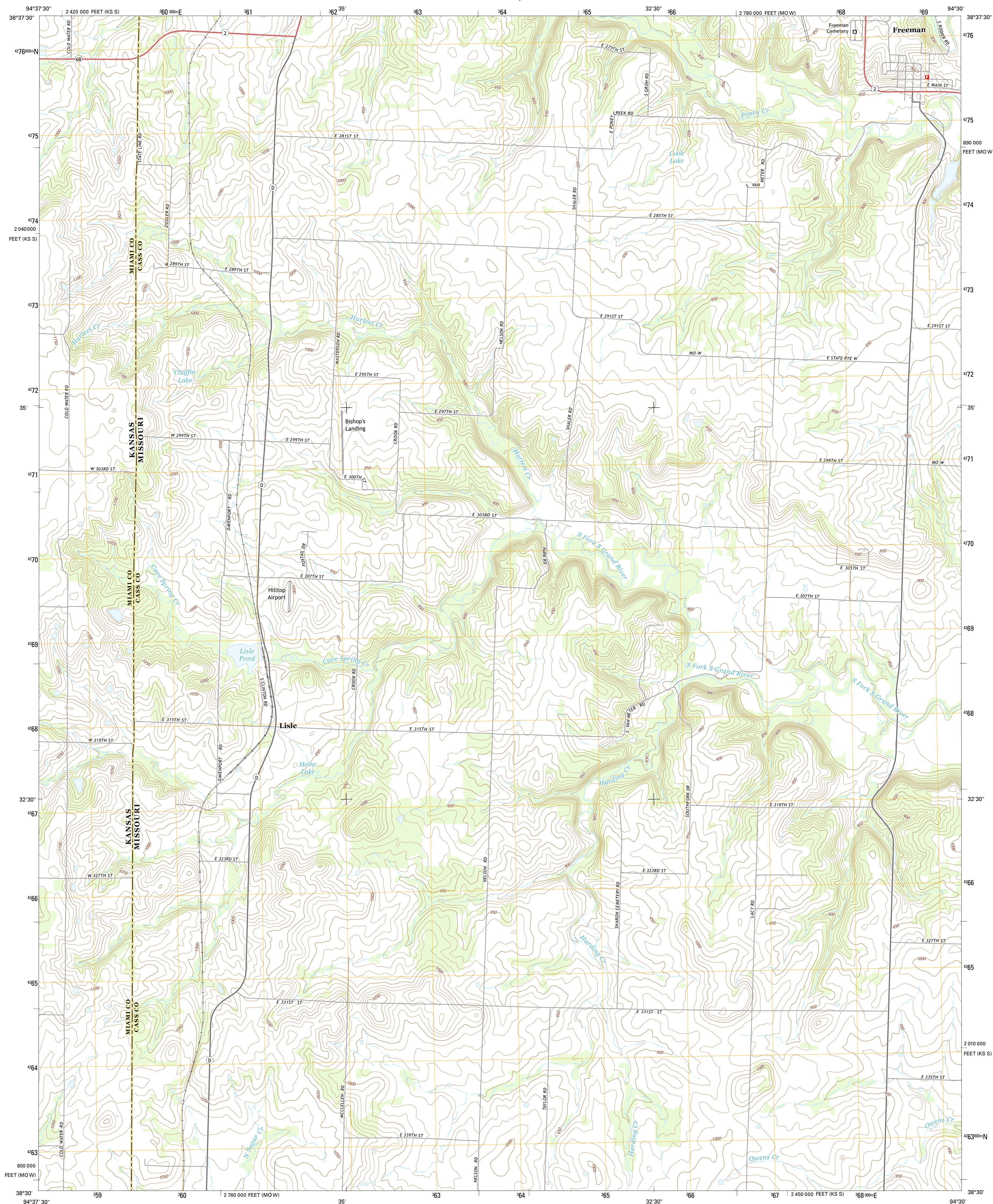




U.S. DEPARTMENT OF THE INTERIOR
U.S. GEOLOGICAL SURVEY



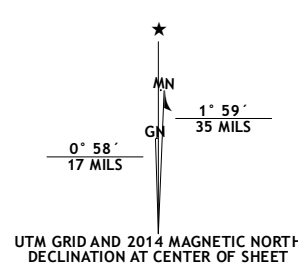
FREEMAN QUADRANGLE
MISSOURI-KANSAS
7.5-MINUTE SERIES



Produced by the United States Geological Survey
North American Datum of 1983 (NAD83)
World Geodetic System of 1984 (WGS84). Projection and
1 000-meter grid: Universal Transverse Mercator, Zone 15S
10 000-foot ticks: Missouri Coordinate System of 1983 (west
zone), Kansas Coordinate System of 1983 (south zone)

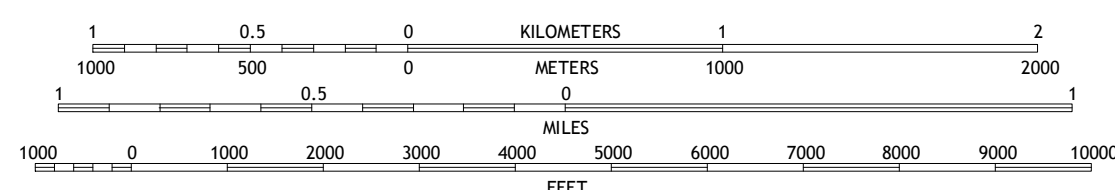
This map is not a legal document. Boundaries may be generalized for this map scale. Private lands within government reservations may not be shown. Obtain permission before entering private lands.

Imagery.....	NAP, June 20
Roads.....	HERE, ©20
Names.....	GNIS, 20
Hydrography.....	National Hydrography Dataset, 20
Contours.....	National Elevation Dataset, 20
Boundaries.....	Multiple sources; see metadata file 1972 - 20
Public Land Survey System.....	BLM, 20



U.S. National Grid
100,000-m Square ID
UC
Grid Zone Designation
15S

SCALE 1:24 000



CONTOUR INTERVAL 10 FEET
NORTH AMERICAN VERTICAL DATUM OF 1988

This map was produced to conform with the
Geospatial Program US Topo Product Standard, 2011.
Data file associated with this product is draft version 0.6.18



ROAD CLASSIFICATION



1	2	3
4		5
6	7	8

ADJOINING QUADRANGLES

- 1 Bucyrus
- 2 West Line
- 3 Peculiar
- 4 Louisburg
- 5 Everett
- 6 New Lancaster
- 7 Drexel
- 8 Main City

FREEMAN, MO-KS
2014

